



MEACOCK & JONES

5 Bedrooms

House - Detached

Located in Hutton
Mount

£1,700,000



enquiries@meacockjones.co.uk

www.meacockjones.co.uk

01277 218485

High Beeches 27 Roundwood Avenue Hutton Mount

Brentwood | | CM13 2LZ



Initial offers are invited in the region of £1,700,000 to £1,800,000

A quite outstanding, five bedroom, sixteenth century style house constructed in the early 1980's and situated on a very large south westerly plot that measures 0.524 acre. Though the property currently comprises 3,614 square feet of well proportioned family accommodation, there is marvellous scope to improve and enlarge, subject to the usual planning consents.



High Beeches 27 Roundwood Avenue

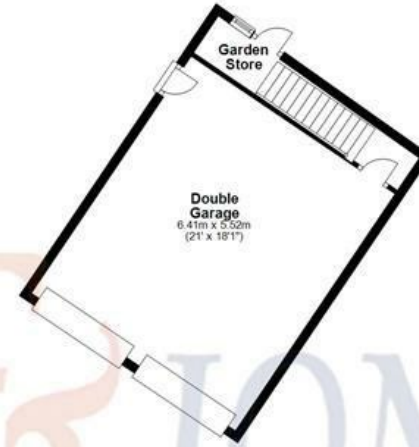
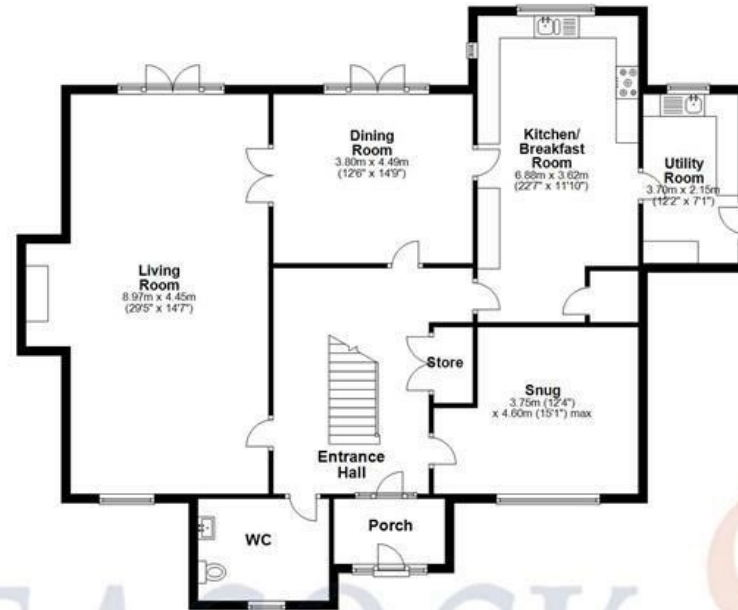
£1,700,000 Freehold

- Five Bedrooms
- Three Reception Rooms
- Utility Room
- 0.524 Acre South Westerly Plot
- Detached Double Garage With Room Above
- Three Bath/Shower Rooms
- Kitchen/Breakfast Room
- Large Entrance Hall
- 3,614 Square Feet
- No Onward Chain





Ground Floor



First Floor



Total area: approx. 335.7 sq. metres (3613.7 sq. feet)

All measurements have been taken as a guide to prospective buyers only and are not precise. This plan is for illustrative purposes only and no responsibility for any error, omission or misstatement. The services, systems and appliances shown have not been tested and no guarantee as to their operability or efficiency can be given. Measurements may have been taken from the widest area and may include wardrobe/cupboard space. No guarantee is given to any measurements including total areas. Buyers are advised to take their own measurements.

Roundwood Ave

MEACOCK & JONES

106 Hutton Road
Shenfield
Essex
CM15 8NB

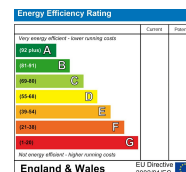
01277 218485

enquiries@meacockjones.co.uk

www.meacockjones.co.uk

Council Tax Band:

Local Authority:



Whilst care has been exercised in the preparation of these particulars, statements about the property must not be relied upon as representations or statements of fact. Prospective purchasers must make and rely upon their own enquiries and those of their professional representatives. All measurements, areas and distances given are approximate. We have not tested any apparatus, equipment, fixtures, fittings or services and so cannot verify they are in working order. Any fixtures or fittings detailed in these particulars are not necessarily included in the sale price and Meacock & Jones and their staff accept no liability for any errors contained therein.

ZOOPLA

rightmove

onTheMarket.com

The Property Ombudsman

tsj
APPROVED CODE
TRADING STANDARDS.GOV.UK

naea | propertymark
PROTECTED

