



MEACOCK & JONES

5 Bedrooms

House - Detached

Located in Hutton
Mount

£2,200,000



enquiries@meacockjones.co.uk

www.meacockjones.co.uk

01277 218485

Beechcroft Cottage 36 Heronway Hutton Mount

Brentwood | Essex | CM13 2LG



A very appealing and spacious 3,197 square foot house, appointed to a very high standard, with bright and sunny accommodation throughout. The large and well tended south westerly rear garden is an attractive feature and has a maximum depth of 94'.

The house has five double bedrooms, each with it's own en-suite bath/shower room. The large open plan kitchen/breakfast room has bi-folding doors that open to the rear garden terrace and this is complemented by three generously proportioned reception rooms.

This house has been fully refurbished by the current owner to high levels of quality and design. All sanitaryware within the property is Villeroy and Boch enhanced by Hansgrohe taps and shower/bath fittings.

This family home is situated in one of the most desirable roads in this exclusive residential area and is only a short walk to the Broadway and mainline railway station and Crossrail terminus.



Beechcroft Cottage 36 Heronway

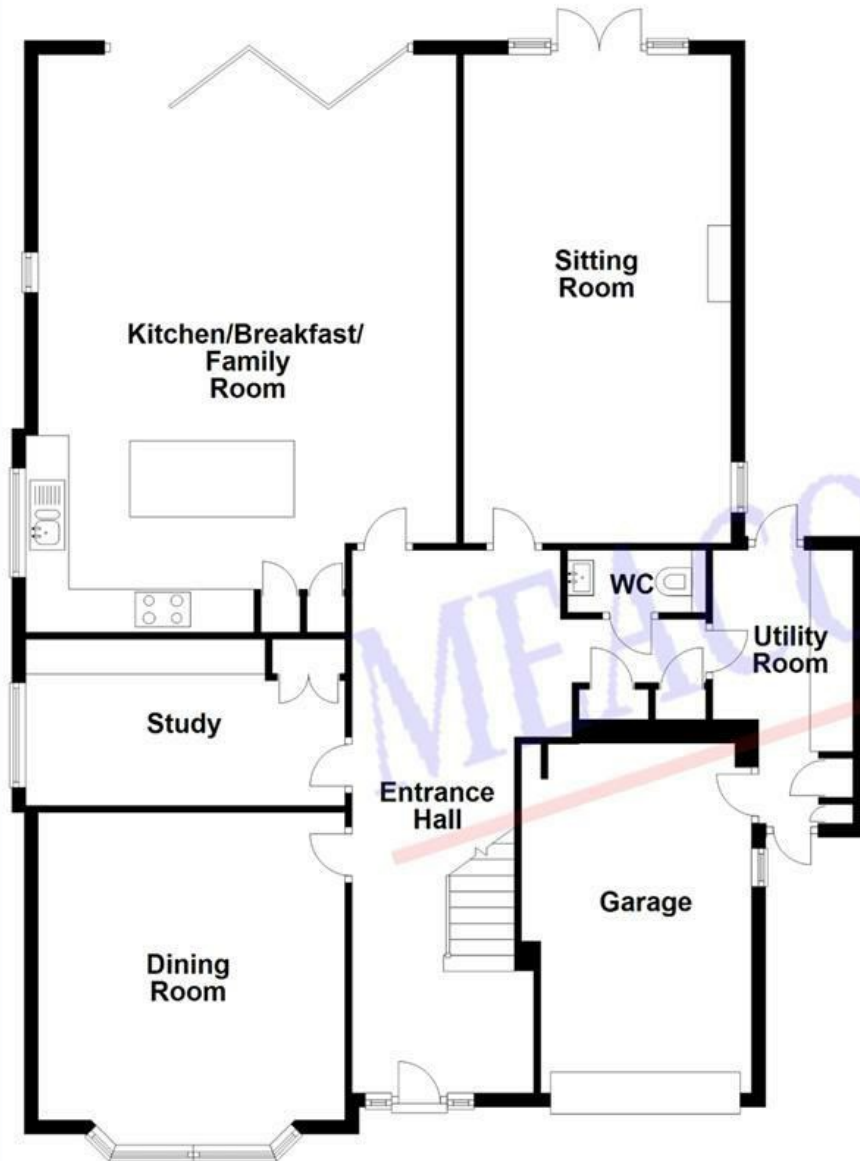
£2,200,000 Freehold

- Five Bedrooms
- Sitting Room
- Study
- Utility Room
- Spacious South West facing rear garden
- Five en-suites
- Dining Room
- Kitchen/breakfast/family room
- Ground floor cloakroom
- Prime Hutton Mount Location

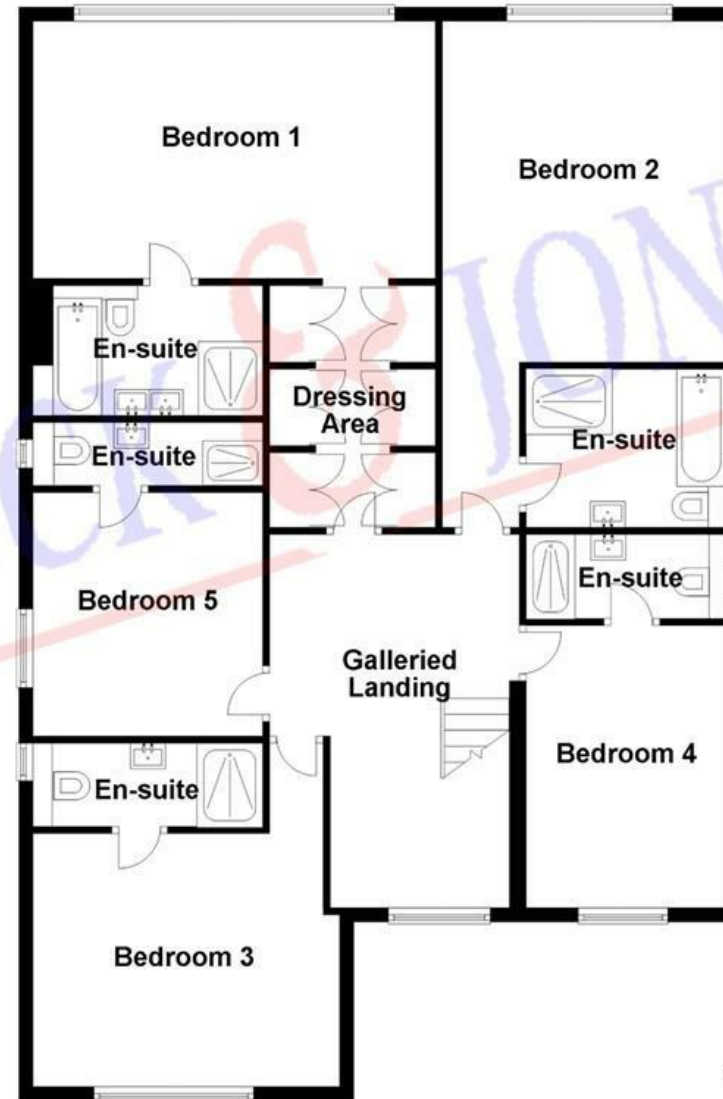




Ground Floor



First Floor



APPROX INTERNAL FLOOR AREA
290 SQ M 3197 SQ FT

This plan is for layout guidance only and is **NOT TO SCALE**.
Whilst every care is taken in the preparation of this plan, please check all dimensions, shapes & compass bearings before making any decisions reliant upon them.
Copyright Meacock & Jones

Reception Hall

25'5 x 16'6 to 9'7

Ground Floor Cloakroom**Utility Room**

12'10 x 6'7 max

Family Room

15'8 x 13'5

Study

15' x 7'10

Sitting Room

22'7 x 12'6

Kitchen/breakfast /family room

27'5 x 20' reducing to 19'

First Floor**Part galleried landing****Bedroom One**

19' x 13'10

Dressing Area

11'6 x 8'3

En-Suite Bathroom**Bedroom Two**

16'5 x 12'7

En-suite**Bedroom Three**

14'10 x 12' plus door recess

En-Suite**Bedroom Four**

12'2 x 10'

En-Suite**Bedroom Five**

11'4 x 10'9

En-Suite**Exterior****Rear Garden****Front Garden****Garage**

16'5 x 9'7 reducing to 9'

MEACOCK & JONES

106 Hutton Road

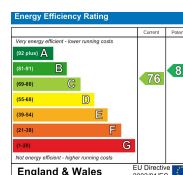
Shenfield

Essex

CM15 8NB

01277 218485

enquiries@meacockjones.co.uk

www.meacockjones.co.uk**Council Tax Band:****Local Authority:**

Whilst care has been exercised in the preparation of these particulars, statements about the property must not be relied upon as representations or statements of fact. Prospective purchasers must make and rely upon their own enquiries and those of their professional representatives. All measurements, areas and distances given are approximate. We have not tested any apparatus, equipment, fixtures, fittings or services and so cannot verify they are in working order. Any fixtures or fittings detailed in these particulars are not necessarily included in the sale price and Meacock & Jones and their staff accept no liability for any errors contained therein.

