



116 Oakdale Drive
Heald Green SK8 3SW
Offers Over £475,000





116 Oakdale Drive Heald Green SK8 3SW

Offers Over £475,000

Available with the benefit of having no onward chain, this spacious detached residence offers well-presented family accommodation which comprises: Entrance porch, entrance hallway, a large open-plan living/dining room has sliding doors to a conservatory. The kitchen is fitted with a double-oven, gas hob and an integrated dishwasher and fridge. There is also a downstairs WC.

To the first floor is a landing which leads to the bedrooms - there are four, all of which are well-proportioned. A bathroom which is fitted with a white suite completes the property.

The house has benefited from recent redecoration and the majority of rooms have been re-carpeted.

The property stands behind a driveway which provides off road parking space in addition to an attached garage. To the rear is a large garden with seating area, lawn, decorative borders and an assortment of established trees and shrubs.

Oakdale Drive is a sought-after residential location which is well-placed for access to schools for all age groups. Plentiful amenities are readily accessible and there are excellent transport network connections nearby.

- Gas Central Heating
- PVCU Double Glazing
- Four Bedrooms
- Open-plan Living/Dining Room
- Fitted Kitchen
- Downstairs WC
- Driveway
- Garage
- Gardens
- No Onward Chain

Entrance Porch
9'11" x 3'9"

Entrance Hallway
13'3" x 4'2"

Living/Dining Room
23'11" x 11'7"

Conservatory
13'7" x 12'2"

Downstairs WC
2'8" x 7'5"

Kitchen
7'11" x 12'7"

First Floor Landing

Bedroom One
12'4" x 11'9"

Bedroom Two
11'8" x 9'9"

Bedroom Three
9'3" x 12'8"

Bedroom Four
8'4" red to 6'0" x 8'10"

Bathroom
8'4" x 5'7"

Attached Garage
17'1" x 8'11"

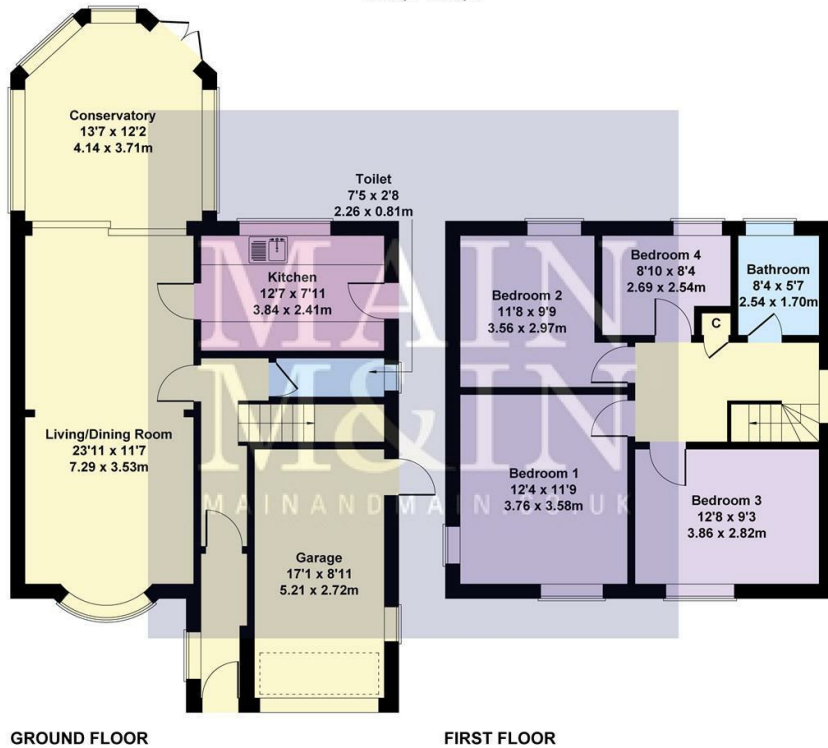
Externally
Garden to the front with driveway.
Enclosed garden to the rear with lawn and seating area.



Tenure: Freehold
Council Tax: Stockport E



Oakdale Drive
 Approximate Gross Internal Area
 1446 sq ft - 134 sq m



Not to Scale. Produced by The Plan Portal 2024
 For Illustrative Purposes Only.



To view this property call Main & Main on 0161 437 1338



Cheadle Hulme Office 29 Station Road ♦ Cheadle Hulme ♦ Stockport ♦ SK8 5AF ♦ 0161 485 1919

Lettings (1st Floor) 198 Finney Lane ♦ Heald Green ♦ Stockport ♦ SK8 3QA ♦ Lettings ♦ 0161 491 6666

Heald Green (Head Office) 198 Finney Lane ♦ Heald Green ♦ Stockport ♦ SK8 3QA ♦ Sales 0161 437 1338 ♦ Auctions ♦ 0161 437 5337

mainandmain.co.uk

England & Wales	
EU Directive 2002/91/EC	
Very environmentally friendly - lower CO2 emissions	(92 plus) A
Very environmentally friendly - lower CO2 emissions	(81-91) B
Very environmentally friendly - lower CO2 emissions	(69-80) C
Very environmentally friendly - lower CO2 emissions	(55-68) D
Very environmentally friendly - lower CO2 emissions	(39-54) E
Very environmentally friendly - lower CO2 emissions	(21-38) F
Very environmentally friendly - lower CO2 emissions	(1-20) G
Current	79
Potential	

England & Wales	
EU Directive 2002/91/EC	
Very energy efficient - lower running costs	(92 plus) A
Very energy efficient - lower running costs	(81-91) B
Very energy efficient - lower running costs	(69-80) C
Very energy efficient - lower running costs	(55-68) D
Very energy efficient - lower running costs	(39-54) E
Very energy efficient - lower running costs	(21-38) F
Very energy efficient - lower running costs	(1-20) G
Current	67
Potential	79

Special Note - The price is correct at the time of going to print, we advise customers to enquire the price of specific properties prior to viewing. We reserve the right to amend/improve the specification at any time. Any special offer relating is offered at the asking price stated and is subject to terms and conditions.

NB - The services, appliances and heating systems have not been tested and therefore no warranty can be given or implied as to their working order. They should therefore be verified on survey by any prospective purchaser. All measurements are approximate.

Tenure - To be confirmed with a solicitor at point of sale.

Call Monitoring System - Please note that all our calls are recorded for monitoring and training purposes.

