



Apt 14 3 Hollyhedge Court Road
Wythenshawe M22 4ZP
£156,500

MAIN
M&IN
SALES · LETTINGS · AUCTIONS

MAINANDMAIN.CO.UK



Apt 14 3 Hollyhedge Court Road Wythenshawe M22 4ZP

£156,500

Offering a safe, modern living space for people over 55 years of age, Village 135 offers impressive communal facilities, including a Bistro Restaurant, a relaxing Spa-Bathroom and a Hair & Beauty salon.

At the heart of Village 135, the Lounge provides a welcoming space where residents can meet friends for coffee, enjoy a meal, or simply socialise. The menu caters to diverse tastes and dietary needs. Alfresco dining is available in the attractive landscaped gardens.

Apartment 14 is located to the second floor of the development, accessed by a choice of stairs or lift. The private entrance to the apartment opens to a wide reception hallway with a large inbuilt storage cupboard.

A spacious open-plan living room/dining kitchen is fitted with modern kitchen units, with electric oven, hob and extractor. The living area has a large glazed window, with a Juliet balcony.

There is a generously-proportioned principal double bedroom with modern fitted wardrobes, a good second bedroom and a spacious wet room with walk-in shower, WC and washbasin.

The development features maintained grounds with large communal car park. The property enjoys excellent public transport links, with the Metrolink tram station just opposite the building.

Tenure: Leasehold
Council Tax: Manchester B

- Secure door entry system
- CCTV Monitoring
- 24/7 on-site care team
- Emergency Call System
- Bistro, Hair & Beauty Salon, Spa Bathroom
- 2 Multi-Purpose Communal Rooms & Guest Rooms
- Laundry Facilities & Scooter Area
- Sun Rooms/Indoor Gardens
- Roof Garden & Landscaped External Gardens
- No Onward Chain

Communal Entrance
Secure CCTV monitored entrance.
Reception area, with Bistro and Communal Lounge beyond.
Choice of stairs or lifts to the second floor.

Private Apartment Entrance

Entrance Hallway
11'10 max x 8'9 max
With deep storage cupboard.

Kitchen/Living/Dining Room
27'1 red to 22'5 x 11'11 max
With Juliet balcony overlooking communal gardens.

Bedroom One
15'3 max x 9'2 max

Bedroom Two
9'5 max x 8'9 max

Shower Room/WC
7'6 x 9'2

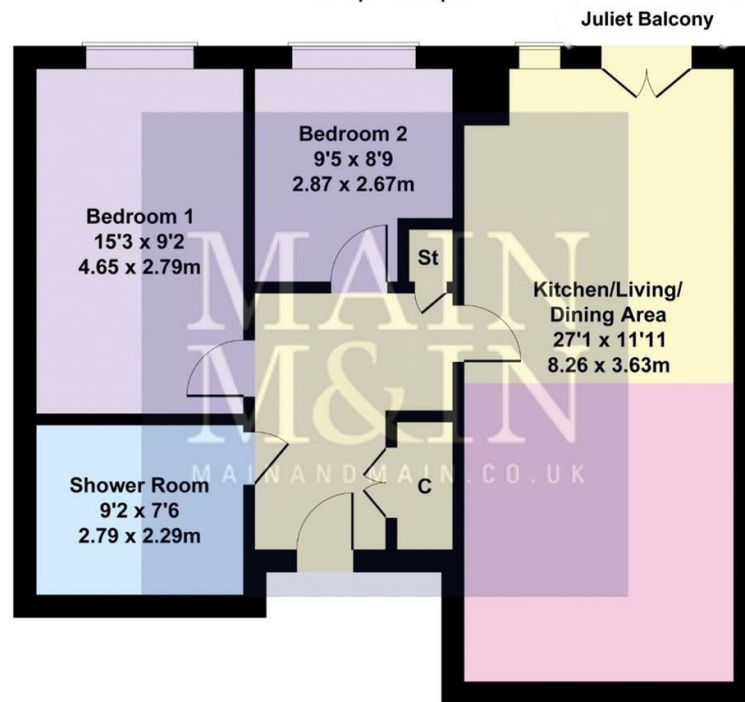
Leasehold Information & Service Charge
Lease: 116 years remain of a 125 year lease which commenced on 20/03/2017
Service Charge: £392.04 pcm - No separate Ground Rent.
NB: Figures are for 2024 -2025 period - 2025 - 2026 figures are TBC by Management Co.



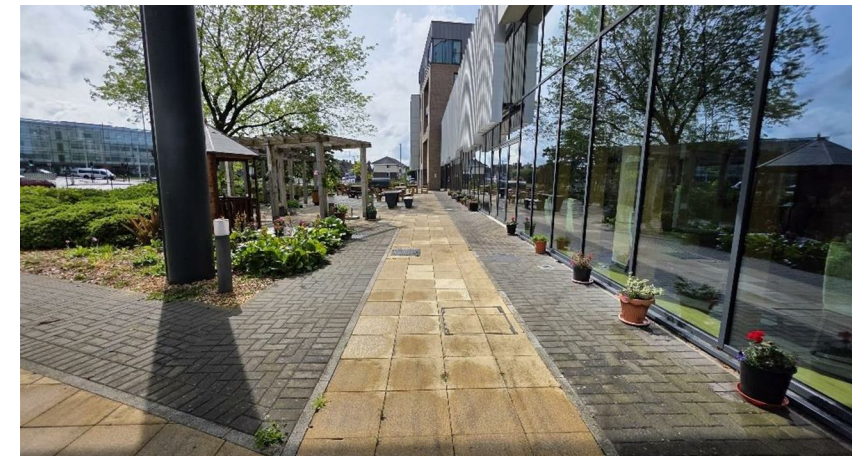
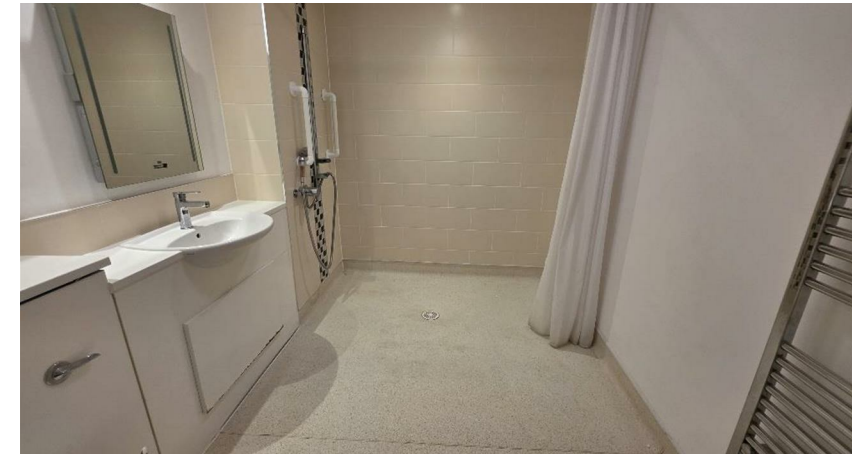


Flat 14, Village 135

Approximate Gross Internal Area
743 sq ft - 69 sq m



Not to Scale. Produced by The Plan Portal 2025
For Illustrative Purposes Only.



To view this property call Main & Main on 0161 437 1338

