



252a Stockport Road
Stockport SK3 0LX
£1,050 Per Month

**MAIN
M&IN**
SALES · LETTINGS · AUCTIONS

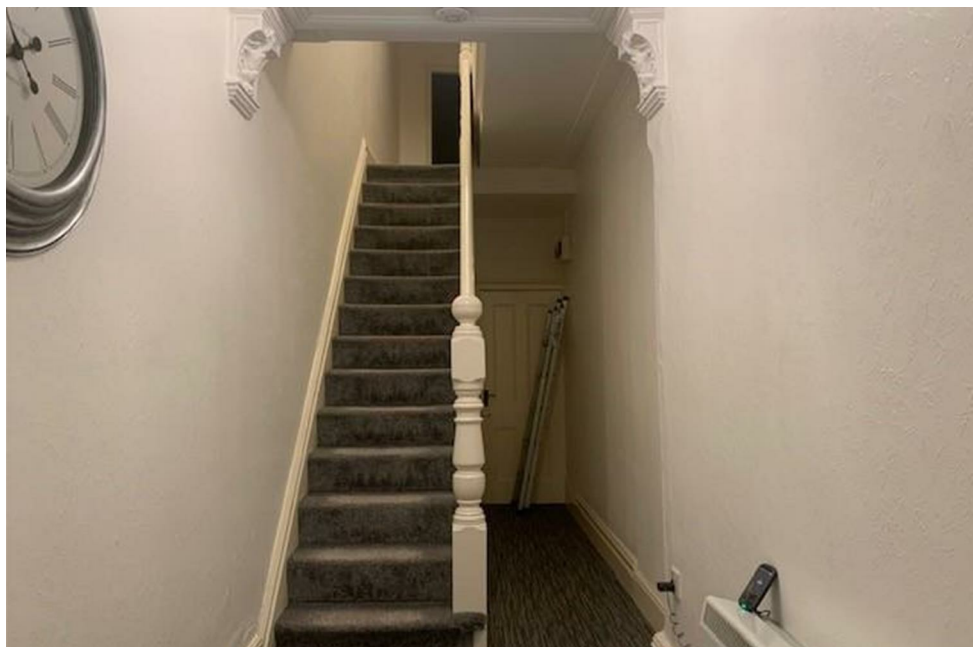


252a Stockport Road

Stockport SK3 0LX Per Month £1,050 Per Month

This beautifully presented two bedroom apartment is available Now. The property comprises of porch, hallway, stairs to kitchen/diner, bathroom with shower cubical, master bedroom, single bedroom. The property benefits from electric heating, walking distance to local shops and close to motorway links.

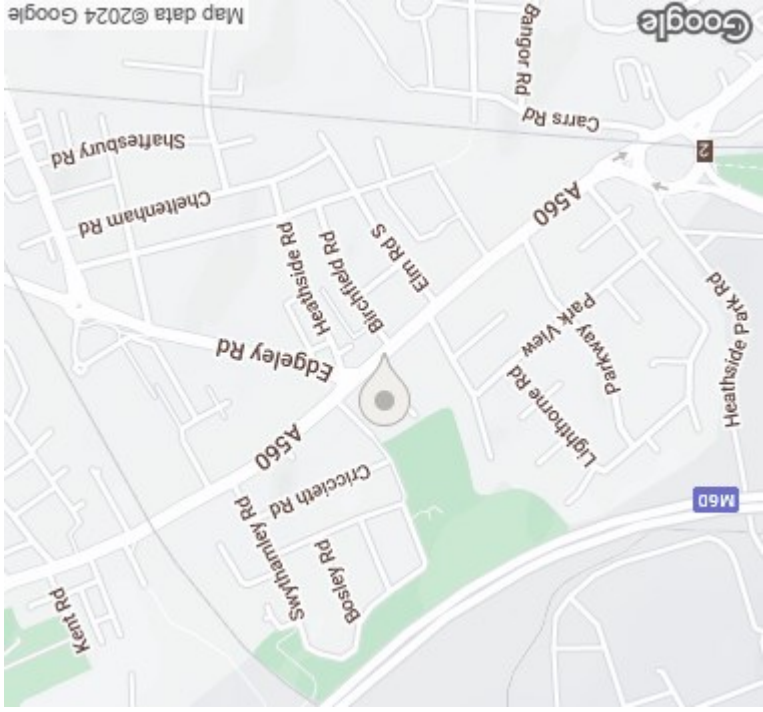
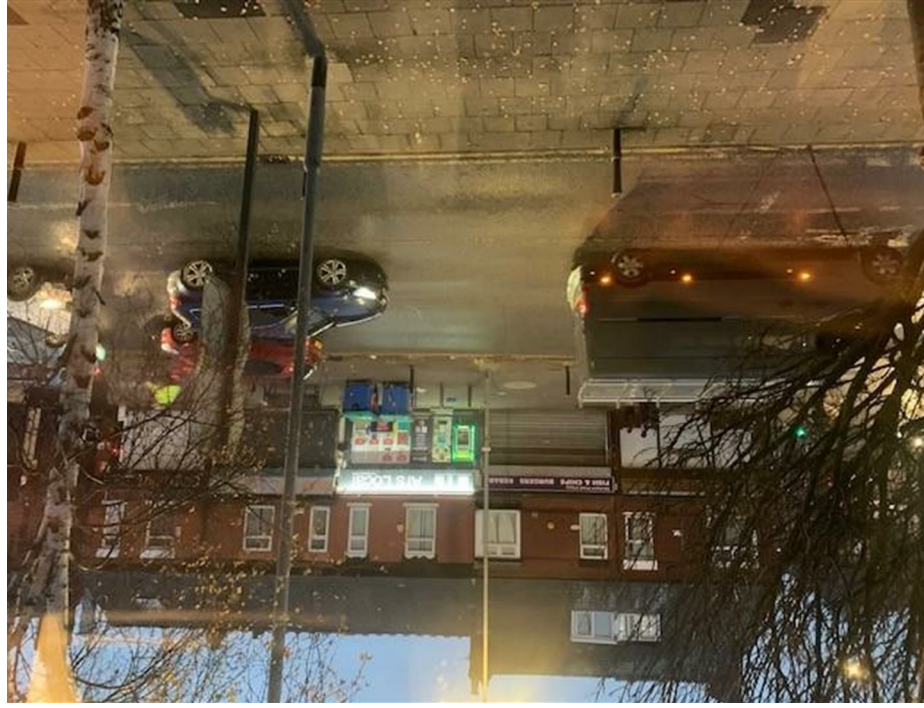
- Unfurnished
- Close to motorway links
- Two bedrooms
- Above a commercial premises
- Available NOW



Tenure:
Council Tax: Stockport A



To view this property call Main & Main on 0161 491 6666



Special Note - The price is correct at the time of going to print, we advise customers to enquire the price of specific properties prior to viewing. We reserve the right to amend/improve the specification at any time. Any special offer relating is offered at the asking price stated and is subject to terms and conditions.

NB - The services, appliances and heating systems have not been tested and therefore no warranty can be given or implied as to their working order. They should therefore be verified on survey by any prospective purchaser. All measurements are approximate.

Tenure- To be confirmed with a solicitor at point of sale.

Call Monitoring System: Please note that all our calls are recorded for monitoring and training purposes.

England & Wales	
EU Directive 2002/91/EC	
Very energy efficient - lower running costs	A
(92 plus)	A
(81-91)	B
(69-80)	C
(55-68)	D
(39-54)	E
(21-38)	F
(1-20)	G
Not energy efficient - higher running costs	G

England & Wales	
EU Directive 2002/91/EC	
Very energy efficient - lower running costs	A
(92 plus)	A
(81-91)	B
(69-80)	C
(55-68)	D
(39-54)	E
(21-38)	F
(1-20)	G
Not energy efficient - higher running costs	G

England & Wales	
EU Directive 2002/91/EC	
Very environmentally friendly - lower CO2 emissions	A
(92 plus)	A
(81-91)	B
(69-80)	C
(55-68)	D
(39-54)	E
(21-38)	F
(1-20)	G
Not environmentally friendly - higher CO2 emissions	G