



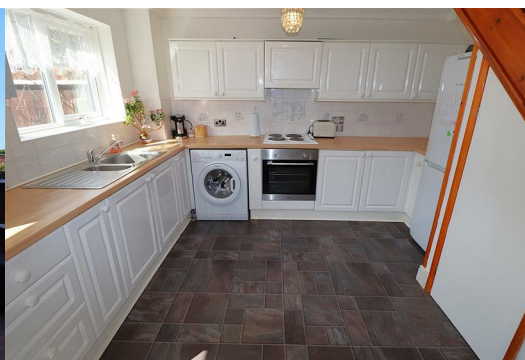
38 Ploughmans Way

Rainham, ME8 8LH

Guide price £280,000



GUIDE PRICE £280,000 - £300,000. A 3 bedroom end of terrace house situated in a highly popular area close to schools, motorway links and local shops. Accommodation downstairs boasts a light and airy dual aspect lounge, and a kitchen/diner offering direct access to the generous sized garden. Upstairs comprises of 2 double bedrooms, a further single and family bathroom. Rear access from the garden, and a garage en bloc very closeby, are a rare and valuable feature with properties of this style. The attractive bay window feature adds character and appeal to this family home, a perfect canvas for those looking to extend or modernise. Offered with NO CHAIN.



Side Entrance Door

Kitchen / Diner

15'9 x 11'9 max (4.80m x 3.58m max)

Lounge

15'9 x 11'4 max (4.80m x 3.45m max)

Stairs from Kitchen/ Diner

Landing

Bedroom 1

11'3 x 9'1 (3.43m x 2.77m)

Bedroom 2

10'3 x 8'4 max (3.12m x 2.54m max)

Bedroom 3

8'3 x 6'5 (2.51m x 1.96m)

Bathroom

7'1 x 5'5 max (2.16m x 1.65m max)

Garden

50' apx (15.24m apx)

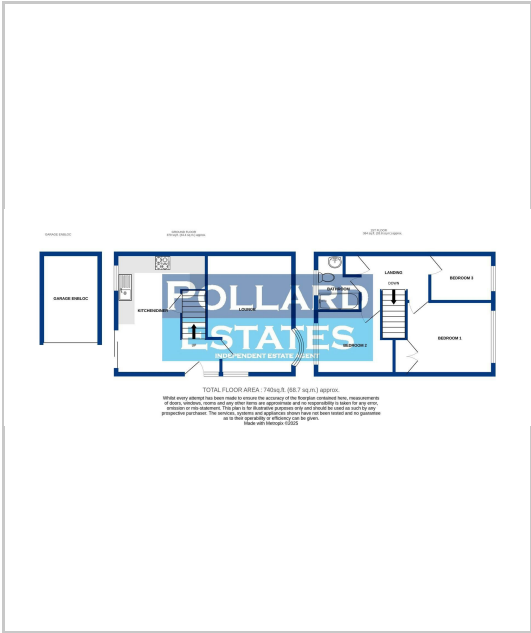
Garage En Bloc

Important Notice -

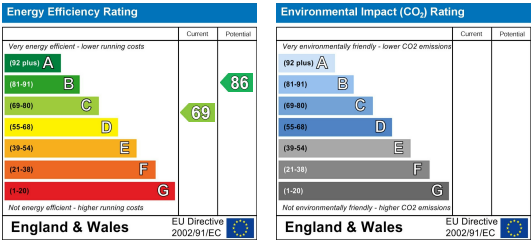
Area Map



Floor Plans



Energy Efficiency Graph



These particulars, whilst believed to be accurate are set out as a general outline only for guidance and do not constitute any part of an offer or contract. Intending purchasers should not rely on them as statements of representation of fact, but must satisfy themselves by inspection or otherwise as to their accuracy. No person in this firms employment has the authority to make or give any representation or warranty in respect of the property.