



## 23 Third Avenue

Gillingham, ME7 2HA

£260,000



A well presented 2 bedroom end of terrace house which traditional configuration includes a hallway and upstairs bathroom. Further benefits include newly laid laminate flooring and carpet, neutral decor, a modern kitchen and a good sized lounge, and master bedroom. The generous length garden favourably backs onto parkland, offering a secluded outlook. This lovely home would make an ideal first time buy and is located approx a mile from Gillingham mainline Station. Numerous schools, both secondary and primary, are also situated close by. On road, non permit parking. Offered with NO CHAIN.





Entrance Door

Hallway

4'3 x 2'6 (1.30m x 0.76m)

Lounge

13'8 x 11'7 max (4.17m x 3.53m max)

Kitchen/Breakfast Room

14'7" x 7'9" (4.45m x 2.36m)

Stairs Up From Hallway

Landing

Bedroom 1

11'7 x 9'5 (3.53m x 2.87m)

Bedroom 2

12'5" x 7'2" (3.80 x 2.19)

Bathroom

7'1" x 5'5" (2.16m x 1.65m)

Garden

approx 55' (approx 16.76m)

Important Notice -

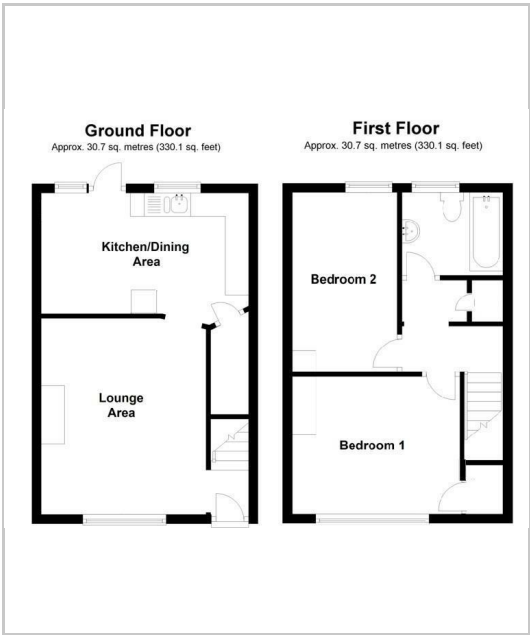
Pollard Estates, their clients and any joint agents give notice that:

1. They have no authority to make or give any representations or warranties in relation to the property. These particulars do not form part of any offer or contract and must not be relied upon as statements or representations of fact. Any areas, measurements or distances are approximate. The text, photographs and plans are for guidance only and are not necessarily comprehensive.
2. It should not be assumed that the property has all necessary planning, building regulations or other consents and Pollard Estates have not tested any services, equipment or facilities. Purchasers must satisfy themselves by inspection or otherwise.

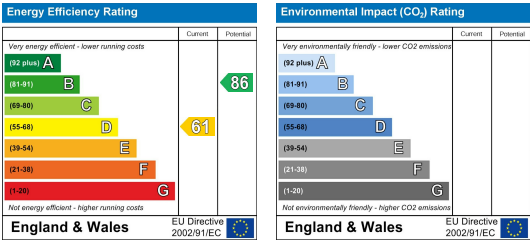
Area Map



Floor Plans



Energy Efficiency Graph



These particulars, whilst believed to be accurate are set out as a general outline only for guidance and do not constitute any part of an offer or contract. Intending purchasers should not rely on them as statements of representation of fact, but must satisfy themselves by inspection or otherwise as to their accuracy. No person in this firms employment has the authority to make or give any representation or warranty in respect of the property.