



Woodlands, 12 Blowers Wood Grove Hempstead, ME7 3RD

Guide price £1,000,000 to £1,100,000

PRICE GUIDE £1,000,000 TO £1,100,000. Prepare to be amazed by this truly one-of-a-kind, stunning detached home that redefines luxury living and delivers the ultimate wow factor.

From the moment you arrive, this remarkable 7-bedroom property impresses with its expansive driveway set on low maintenance imprinted concrete, offering parking for multiple vehicles. Step inside and discover an exceptional living space that's perfectly designed for modern family life and entertaining.

The heart of the home is the alluring 24 foot kitchen with Italian granite worktops, ideal for cooking and gathering. Flowing seamlessly from here is the huge L-shaped lounge/diner with beautiful Spanish Calacatta tiled flooring, bathed in natural light and made even more impressive by bi-folding doors that span the rear of the house, effortlessly blending indoor and outdoor living.

All bedrooms are generously sized, with two benefitting from stylish en-suites. The incredible master bedroom boasts a large en-suite which benefits from quality Jerusalem Travertine tiles, a continental wet room area, feature egg bath, a bidet, two wash hand basins and WC. The standout feature, however, is the spectacular landscaped garden, complete with a built-in framed pagoda featuring integrated heating and lighting – perfect for all-year-round enjoyment. An additional framed pagoda creates a dedicated BBQ area, ideal for hosting guests.

To top it all off, a luxurious summer house/cabin housing a 7-seater hot tub, creating your own private oasis. The surround wooded area offers sought after privacy.

There simply isn't another home like this in the area. Elegant, spacious, and packed with unique features, this property must be seen to be fully appreciated. Fall in love at first sight – book your viewing today. This stunning home also offers a configuration which could include Annex style living with minimal modifications. Offered with NO CHAIN. Close to motorway links, shops & restaurants.

Woodlands, 12 Blowers Wood Grove

Hempstead, ME7 3RD



- SOLD BY POLLARD ESTATES
- Convenient For Shops & A2/M2
- Huge Kitchen & Lounge/Diner
- 7 Bedrooms
- Landscaped Garden
- Council Tax - F
- 2 En Suites
- Cabin/Summer House
- EPC - C

Entrance Door

Hallway

Cloakroom

Office

10'2 x 8'3 (3.10m x 2.51m)

Kitchen/Breakfast Room

24'2 x 11'1 max (7.37m x 3.38m max)

L Shaped Lounge

28'6 x 27'5 (8.69m x 8.36m)

L Shaped

Door From Office To Dining Room

Utility Room

10'7 x 6'5 (3.23m x 1.96m)

Boot Room (Front Garage Partition)

8'2 x 3'2 (2.49m x 0.97m)

Dining Room

15'9 x 15'0 (4.80m x 4.57m)

Bedroom 6

14'3 7'7 (4.34m x 2.31m)

Bedroom 7

14'4 x 7'8 (4.37m x 2.34m)

Stairs Up From Both Hallway & Dining Room

Landing

Bedroom 5

10'10 x 7'2 (3.30m x 2.18m)

Shower Room

6'8 x 5'6 (2.03m x 1.68m)

Bedroom 4

10'2 x 8'9 (3.10m x 2.67m)

Bedroom 3

16'6 x 9'10 max (5.03m x 3.00m max)

Bedroom 2

13'9 x 13'3 (4.19m x 4.04m)

En-Suite

6'4 x 6'2 (1.93m x 1.88m)

Master Bedroom

23'5 x 16'1 max (7.14m x 4.90m max)

En-Suite

14'3 x 11'8 (4.34m x 3.56m)

Landscaped Garden

approx 55' x 50' (approx 16.76m x 15.24m)

Cabin/Summer House

17'5 x 12'6 (5.31m x 3.81m)

Imprinted Concrete Driveway

Important Notice -

Pollard Estates, their clients and any joint agents give notice that:

1. They have no authority to make or give any representations or warranties in relation to the property. These particulars do not form part of any offer or contract and must not be relied upon as statements or representations of fact. Any areas, measurements or distances are approximate. The text, photographs and plans are for guidance only and are not necessarily comprehensive.
2. It should not be assumed that the property has all necessary planning, building regulations or other consents and Pollard Estates have not tested any services, equipment or facilities. Purchasers must satisfy themselves by inspection or otherwise.

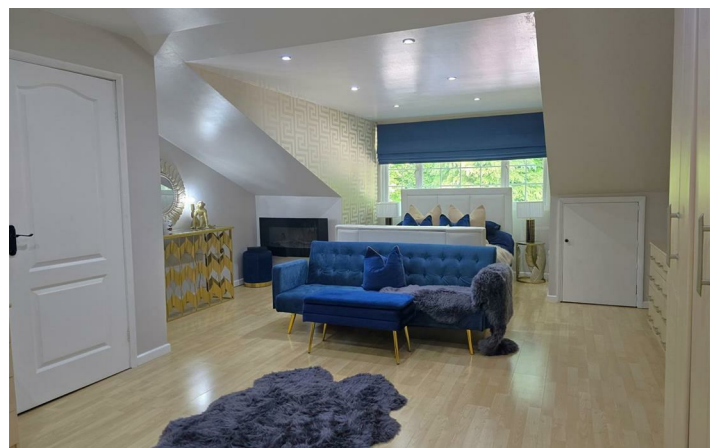


Directions

From the office in Station Rd, Rainham Head southwest on Station Rd/B2004 toward Rainham Shopping Centre Turn right onto High St/A2 At Bowaters Roundabout, take the 2nd exit onto Hoath Way/A278 At the roundabout, take the 2nd exit and stay on Hoath Way/A278 At the roundabout, take the 3rd exit onto Sharsted Way At the roundabout, take the 1st exit onto The Rise Turn left onto Lambsfrith Grove Turn right onto Houghton Ave Turn left onto Blowers Wood Grove Destination will be on the right Blowers Wood Grove, Hempstead

Tel: 01634 36 36 06

sales@pollardestates.co.uk



Approximate Gross Internal Area = 274.8 sq m / 2957 sq ft
Outbuilding = 21.7 sq m / 233 sq ft
Total = 296.5 sq m / 3190 sq ft



Illustration For Identification Purposes Only. Not To Scale (ID1200562 / Ref:90545)

These particulars, whilst believed to be accurate are set out as a general outline only for guidance and do not constitute any part of an offer or contract. Intending purchasers should not rely on them as statements of representation of fact, but must satisfy themselves by inspection or otherwise as to their accuracy. No person in this firms employment has the authority to make or give any representation or warranty in respect of the property.

