



10 Hallwood Close

Rainham, ME8 9NT

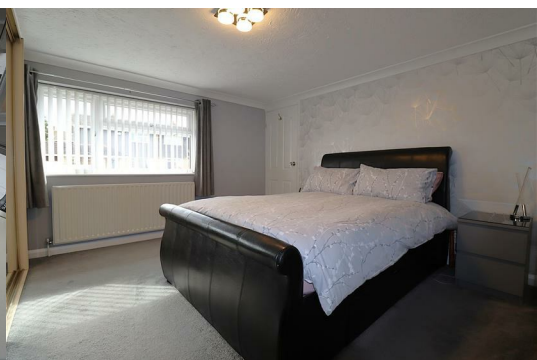
Guide price £450,000



Guide Price £450,000 to £475,000

A superbly presented family home offering extended and spacious accommodation. Downstairs comprises of a cloakroom, large lounge, separate dining room and stunning kitchen. Upstairs offers four well appointed bedrooms, the master benefitting from a generous sized en-suite, with another bedroom accommodating an enclosed shower cubicle. The family bathroom is both practical and stylish. The rear garden is two tiered with two spacious decked areas, ideal for entertaining.

This modern and contemporary home offers plenty of space and is located in a popular cul-de-sac close to Parkwood Shopping Precinct, numerous schools and motorway links. Must be viewed!



Porch

Hallway

Cloakroom

4'4 x 3'3 (1.32m x 0.99m)

Lounge

20'8 x 11'2 (6.30m x 3.40m)

Dining Room

12'1 x 9'8 (3.68m x 2.95m)

Kitchen

11'7 x 10'4 (3.53m x 3.15m)

Stairs Up From Hallway

Landing

Bedroom 1

13'1 x 12'1 (3.99m x 3.68m)

En-Suite Shower Room

7'8 x 7'0 (2.34m x 2.13m)

Bedroom 2

10'7 x 10'1 (3.23m x 3.07m)

Bedroom 3

11'2 x 9'9 (3.40m x 2.97m)

Bedroom 4

14'9 x 7'2 (4.50m x 2.18m)

Shower Enclosure

Bathroom

Garden

approx 45' x 35' (approx 13.72m x 10.67m)

Garage

16'6 x 8'2 (5.03m x 2.49m)

Important Notice -

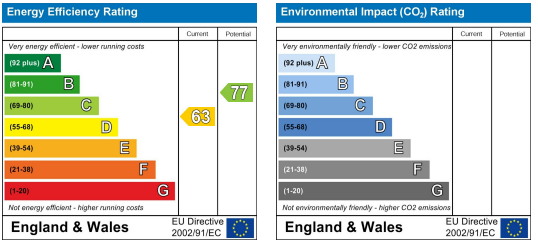
Area Map



Floor Plans



Energy Efficiency Graph



These particulars, whilst believed to be accurate are set out as a general outline only for guidance and do not constitute any part of an offer or contract. Intending purchasers should not rely on them as statements of representation of fact, but must satisfy themselves by inspection or otherwise as to their accuracy. No person in this firms employment has the authority to make or give any representation or warranty in respect of the property.