



59 Parkfield Road

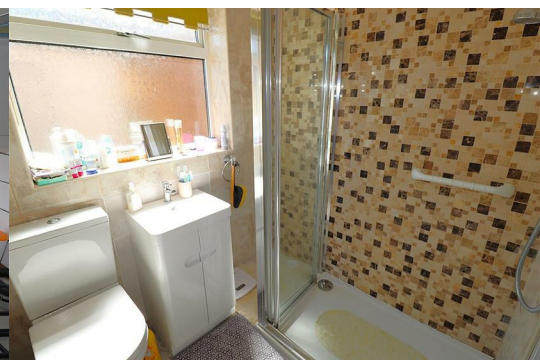
Rainham, ME8 7TA

Guide price £330,000



Guide Price £330,000 - £345,000

An extended bungalow enjoying an enviable sized plot with further potential to extend or develop (STPP). Boasting attractive kerb appeal and a sought after central location, offering a short walk to Rainham Station and shops. Accommodation includes two bedrooms, a lounge and conservatory which over look the sunny aspect and large garden, a shower room, well presented kitchen and an extended dining room. Complete with garage and driveway allowing ample parking, and a hassle free NO CHAIN purchase!



Entrance Door

Hallway

Bedroom 2

8'4 x 8'2 (2.54m x 2.49m)

Bedroom 1

12'5 x 11'1 (3.78m x 3.38m)

Shower Room

6'5 x 5'7 (1.96m x 1.70m)

Lounge

13'10 x 10'9 (4.22m x 3.28m)

Conservatory

9'10 x 8'2 (3.00m x 2.49m)

Kitchen

9'9 max x 9'9 max (2.97m max x 2.97m max)

Dining Room

9'8 x 6'5 (2.95m x 1.96m)

Garden

approx 55 x 40 (approx 16.76m x 12.19m)

Garage

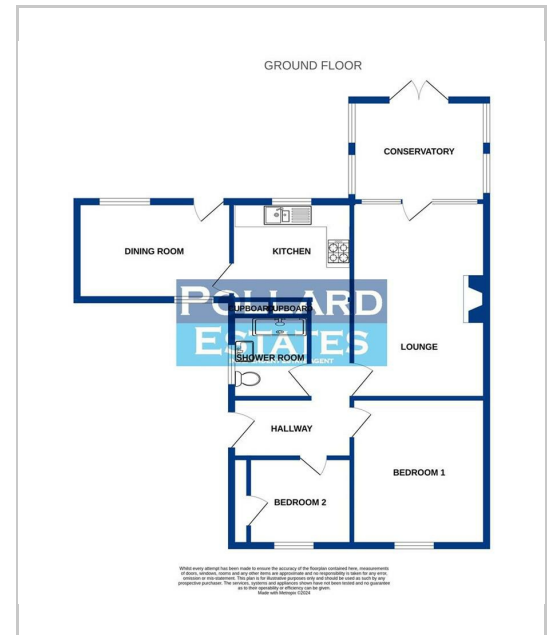
16'6 x 8 (5.03m x 2.44m)

Driveway

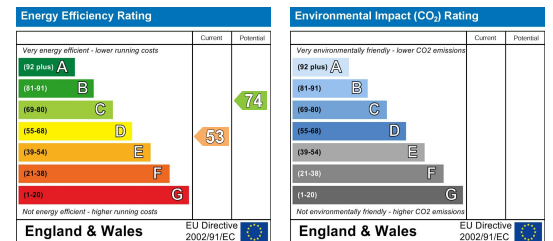
Area Map



Floor Plans



Energy Efficiency Graph



These particulars, whilst believed to be accurate are set out as a general outline only for guidance and do not constitute any part of an offer or contract. Intending purchasers should not rely on them as statements of representation of fact, but must satisfy themselves by inspection or otherwise as to their accuracy. No person in this firm's employment has the authority to make or give any representation or warranty in respect of the property.