



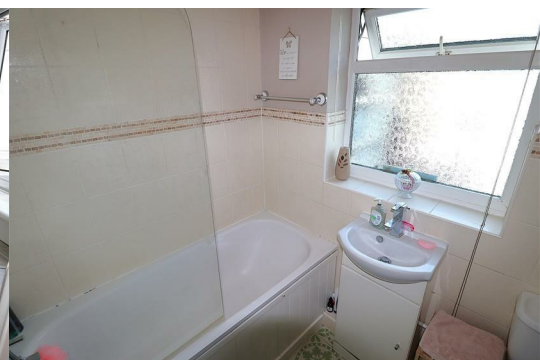
## 4 Naylor's Cottages The Street

Bredhurst, ME7 3LE

£290,000



Beautiful village location and parking to rear! A well presented, quaint and attractive two bedroom cottage boasting appealing character. Accommodation downstairs comprises of a good sized lounge/diner, a modern kitchen, bathroom and a conservatory which offers lovely views of the secluded garden and can be utilised as an additional dining area. Upstairs offers the two bedrooms. Parking to rear is included at the end of the sunny aspect garden. Bredhurst Village boasts a village hall which hosts numerous events and is perfect way for anyone wishing to integrate into the community. A local pub and school are also within a very short walk away while motorway links, access to Maidstone and Hempstead Valley shopping centre are located close by. Properties in Bredhurst are rarely available so call at your earliest opportunity to view!



## Entrance Hall

## Lounge/Diner

19'3 x 11'9 max (5.87m x 3.58m max)

## Kitchen

11'7 x 7'0 (3.53m x 2.13m)

## Bathroom

7'0 x 5'4 (2.13m x 1.63m)

## Conservatory

14'5 x 11'4 (4.39m x 3.45m)

## Stairs Up

## Bedroom 1

11'9 x 8'7 (3.58m x 2.62m)

## Bedroom 2

11'9 x 7'1 max (3.58m x 2.16m max)

## Garden

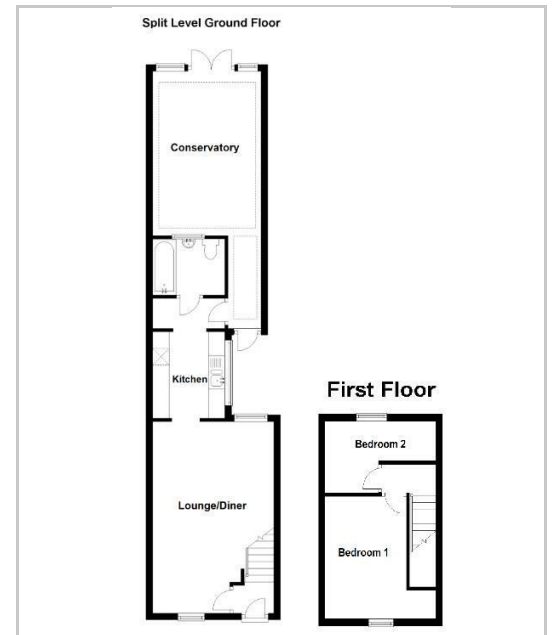
approx 75' inc parking area (approx 22.86m inc parking area)

## Parking To Rear

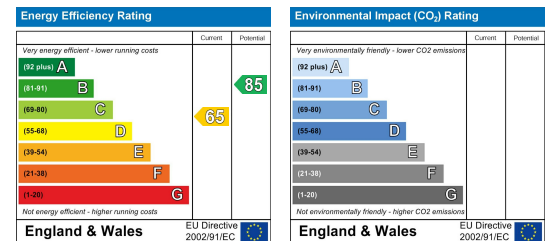
## Area Map



## Floor Plans



## Energy Efficiency Graph



These particulars, whilst believed to be accurate are set out as a general outline only for guidance and do not constitute any part of an offer or contract. Intending purchasers should not rely on them as statements of representation of fact, but must satisfy themselves by inspection or otherwise as to their accuracy. No person in this firm's employment has the authority to make or give any representation or warranty in respect of the property.