



48 Sedley Close

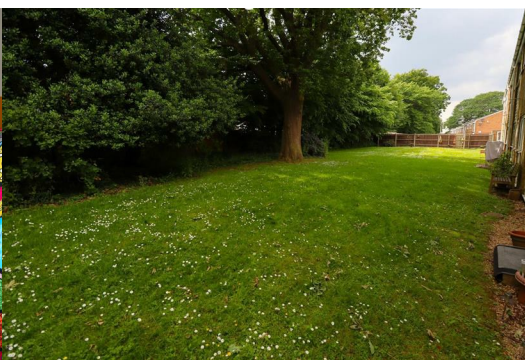
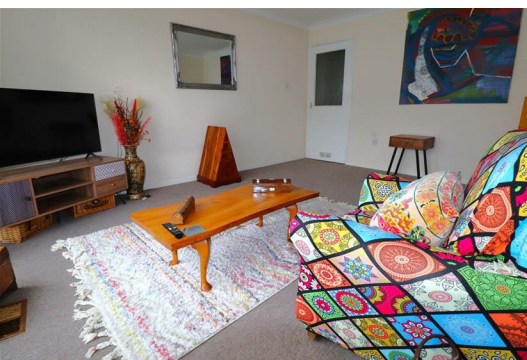
Rainham, ME8 9QZ

£210,000



LONG LEASE OF APPROX. 120 YEARS REMAINING! Offered with NO CHAIN is this spacious ground floor flat offering light and airy accommodation. Located within an attractive and ever popular development with a garage. Perfectly located for Parkwood shops, numerous schools and motorway access.

The vendor advises the ground rent is £62 paid 6 monthly and the service charge is £60 per month approximately. (VERIFICATION REQUIRED BY YOUR SOLICITOR). An ideal first time buy!

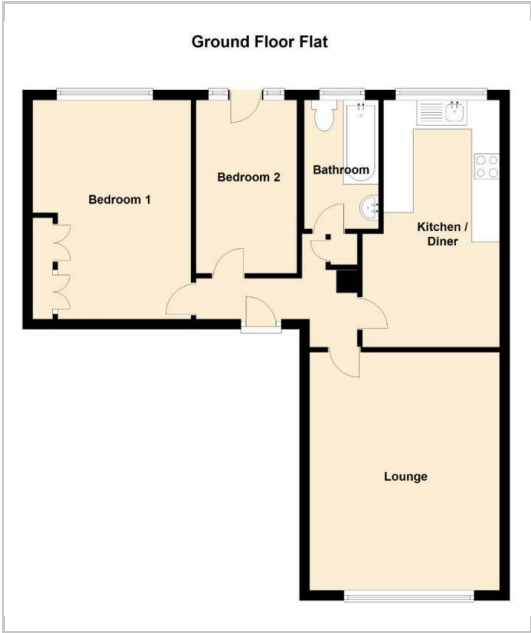


- Communal Door
- Communal Entrance Hall
- Door To
- Hallway
- Kitchen
- 16'4 x 7'6 (4.98m x 2.29m)
- Lounge/Diner
- 15'6 x 12'7 (4.72m x 3.84m)
- Bathroom
- 7'9 x 4'9 (2.36m x 1.45m)
- Bedroom One
- 14'4 x 10'2 (4.37m x 3.10m)
- Bedroom Two
- 11'6 x 6'9 (3.51m x 2.06m)
- Communal Gardens
- Garage En Bloc

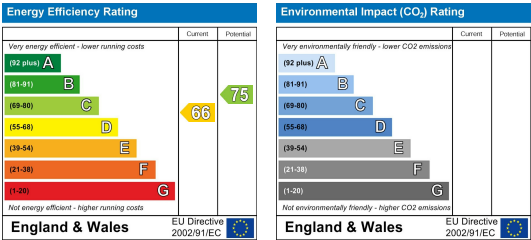
Area Map



Floor Plans



Energy Efficiency Graph



These particulars, whilst believed to be accurate are set out as a general outline only for guidance and do not constitute any part of an offer or contract. Intending purchasers should not rely on them as statements of representation of fact, but must satisfy themselves by inspection or otherwise as to their accuracy. No person in this firms employment has the authority to make or give any representation or warranty in respect of the property.