



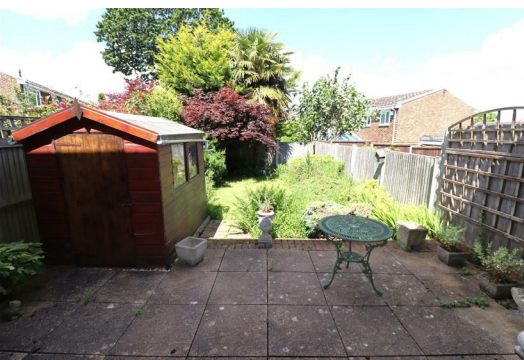
7 Thrale Way

Rainham, ME8 9LX

Offers in the region of £265,000



Pollard Estates are delighted to welcome to the market this highly popular style two double bedroom, staggered terrace house. The accommodation comprises of a generous sized lounge/diner, kitchen and bathroom. Externally there is a sunny aspect rear garden and off road parking to the front. The garage offers the opportunity for conversion and additional space (STPP). Properties of this configuration are always in demand so your earliest viewing is recommended. Location is perfect for access to motorway links, local schools and Hempstead Valley Shopping Centre. NO CHAIN.



Door To

Porch

Door To

Lounge/Diner

20'5 x 10'4 (6.22m x 3.15m)

Kitchen

11'3 x 8'2 max (3.43m x 2.49m max)

Stairs Up

Landing

Bedroom 1

11'9 x 10'3 (3.58m x 3.12m)

Bedroom 2

10'2 x 9'0 (3.10m x 2.74m)

Bathroom

6'9 x 5'8 (2.06m x 1.73m)

Garden

30' x 20' (9.14m x 6.10m)

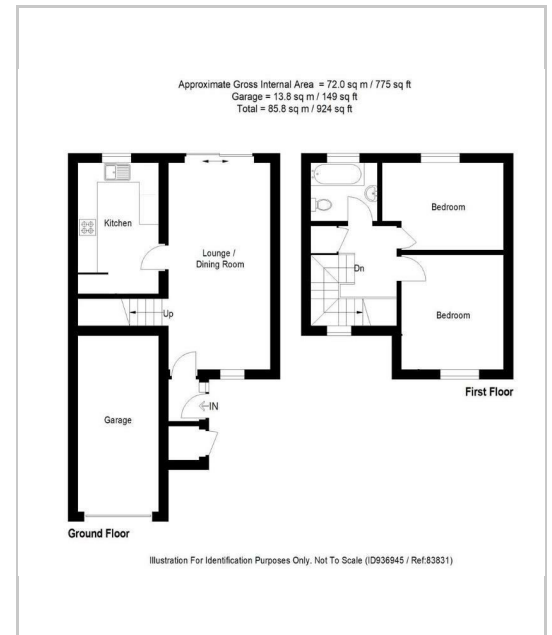
Garage

17'6 x 8'2 (5.33m x 2.49m)

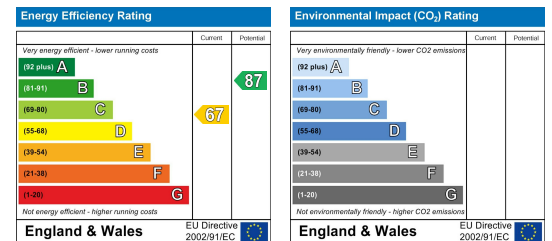
Area Map



Floor Plans



Energy Efficiency Graph



These particulars, whilst believed to be accurate are set out as a general outline only for guidance and do not constitute any part of an offer or contract. Intending purchasers should not rely on them as statements of representation of fact, but must satisfy themselves by inspection or otherwise as to their accuracy. No person in this firm's employment has the authority to make or give any representation or warranty in respect of the property.