



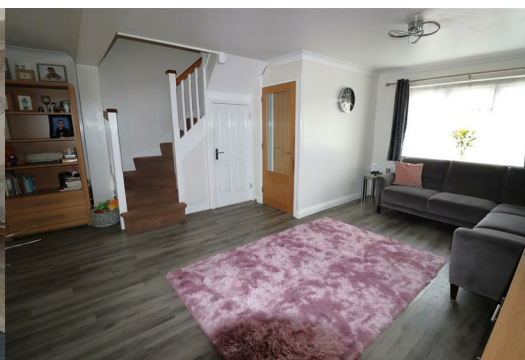
35 Hickory Dell

Hempstead, ME7 3SL

Offers in excess of £390,000



A 3 bedroom (potentially 4) semi detached house which has been thoughtfully extended with modern living in mind. Downstairs comprises of a larger than average lounge, a cloakroom, modern kitchen and a bedroom. Upstairs offers 2 double bedrooms (formerly 3, and can be converted back) and a well presented bathroom. The landscaped rear garden is now tiered over 3 levels and offers seclusion and practical use. The driveway offers parking for several cars and leads to a garage. This family home is located in a quiet cul-de-sac close to Hempstead Valley Shopping Centre and motorway links.



Door To

Porch

7'1 x 3'5 (2.16m x 1.04m)

Cloakroom

Door To

Lounge

18'3 max x 16'5 (5.56m max x 5.00m)

Kitchen/Diner

15'7 max x 15'5 (4.75m max x 4.70m)

Bedroom 3

12'3 x 7'1 (3.73m x 2.16m)

Stairs Up

Landing

Bedroom 1

16'5 x 10'2max (5.00m x 3.10mmax)

Bedroom 2

11'2 x 8'7 (3.40m x 2.62m)

Bathroom

7'6 x 6'6 (2.29m x 1.98m)

Garden - Tiered On 3 Levels

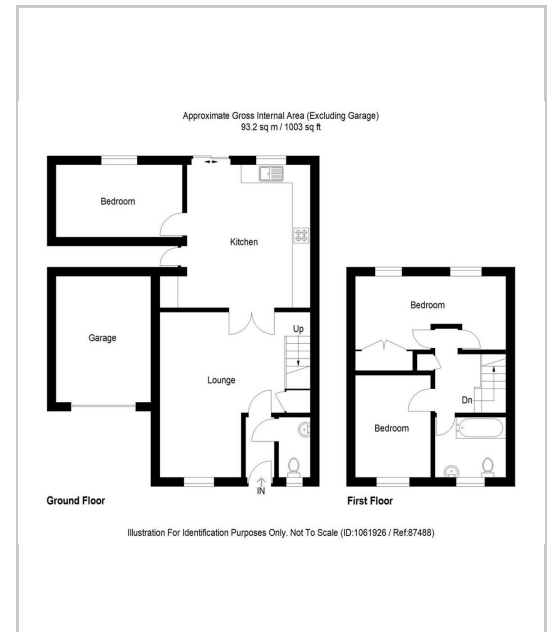
Garage

Driveway

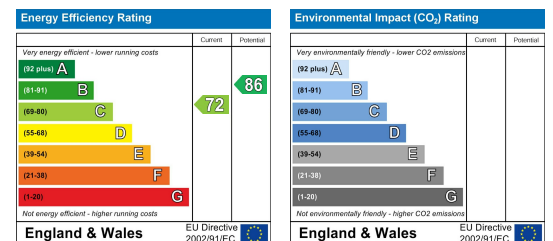
Area Map



Floor Plans



Energy Efficiency Graph



These particulars, whilst believed to be accurate are set out as a general outline only for guidance and do not constitute any part of an offer or contract. Intending purchasers should not rely on them as statements of representation of fact, but must satisfy themselves by inspection or otherwise as to their accuracy. No person in this firm's employment has the authority to make or give any representation or warranty in respect of the property.