



274 Lonsdale Drive

Rainham, ME8 9JT

Guide price £490,000 to £510,000



Price guide £490,000 to £510,000.

A deceptively large home boasting bedrooms which are all considered double in size. Downstairs offers a generous sized, light and airy lounge/diner, a modern kitchen, large conservatory and an inner hallway leading to a cloakroom and bedroom (formerly garage). Upstairs comprises of a larger than average 4 piece bathroom, three double bedrooms and a master benefiting from a walk in wardrobe. Externally, the sunny aspect and low maintenance astro turfed rear garden boasts a raised decked area with summer house. There is potential to extend up into the loft subject to planning.

The frontage provides ample parking. Local schools and shops are located close by along with easy motorway access.



Door to

Hallway

Door to

Dining Room

10'5 x 10'2 (3.18m x 3.10m)

Lounge

12'2 x 12'1 (3.71m x 3.68m)

Kitchen

17'9 x 8'6 (5.41m x 2.59m)

Conservatory

12'4 x 12'9 (3.76m x 3.89m)

Inner Hallway from Dining Room

Cloakroom

4'9 x 4'4 (1.45m x 1.32m)

Bedroom 5

9'3 x 8'5 (2.82m x 2.57m)

Stairs to

Landing

Bathroom

8'3 x 7'6 (2.51m x 2.29m)

Bedroom 4

8'7 x 8'9 (2.62m x 2.67m)

Bedroom 3

10'9 x 9'7 (3.28m x 2.92m)

Bedroom 2

12'1 x 8'9 (3.66m x 2.67m)

Bedroom 1

13'1 x 10'1 (3.99m x 3.07m)

Walk in Wardrobe

Garden

50 x 30 apx (15.24m x 9.14m apx)

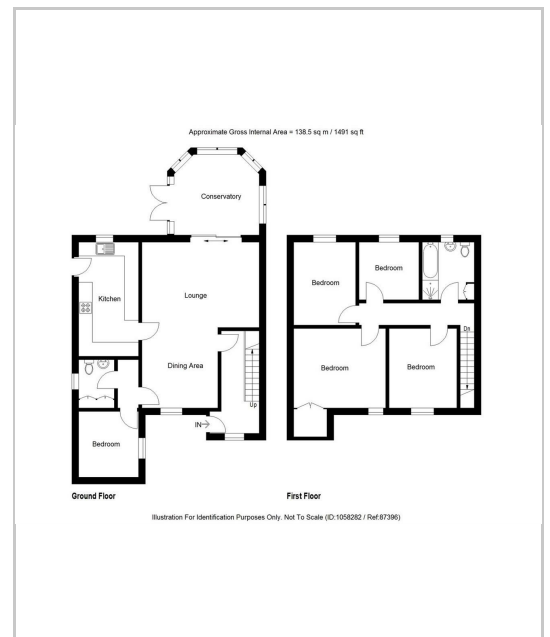
Summer House

Driveway for Multiple Cars

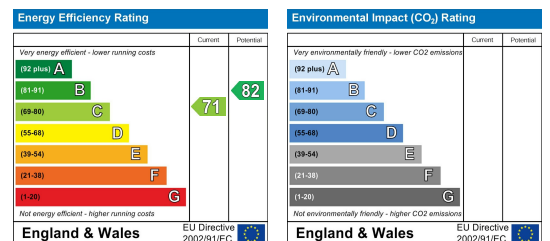
Area Map



Floor Plans



Energy Efficiency Graph



These particulars, whilst believed to be accurate are set out as a general outline only for guidance and do not constitute any part of an offer or contract. Intending purchasers should not rely on them as statements of representation of fact, but must satisfy themselves by inspection or otherwise as to their accuracy. No person in this firm's employment has the authority to make or give any representation or warranty in respect of the property.