



**45, Greenways, Bow Brickhill, Milton Keynes MK17 9JR**  
**£200,000**



RARE 1 Bedroom Bungalow in the delightful Bow Brickhill.

The property has been much improved by the current owner and is truly stunning throughout. Accommodation comprises entrance hall, lounge, kitchen / diner, double bedroom and bathroom. Very well kept front and rear gardens are outside.

Access to A5 and Woburn Sands High Street are approx 5 Minute drives from the property and a viewing is advised to appreciate.

**Lounge**

**18'1 x 9**

**Kitchen / Diner**

**19'9 x 10**

**Bedroom**

**13'5 x 9'9**

**Bathroom**



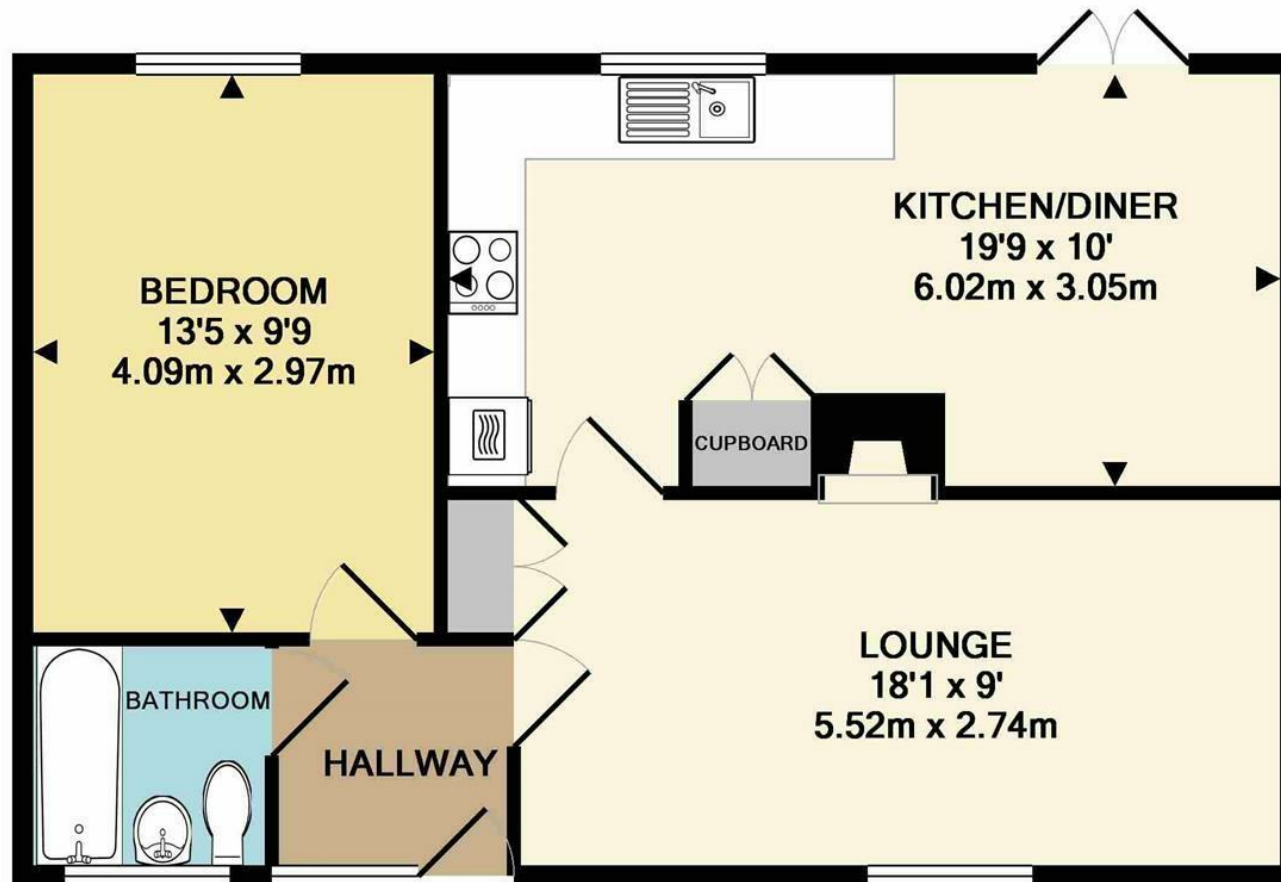
Energy Efficiency Rating		
	Current	Potential
Very energy efficient - lower running costs		
(92 plus) A		87
(81-91) B		
(69-80) C	69	
(55-68) D		
(39-54) E		
(21-38) F		
(1-20) G		
Not energy efficient - higher running costs		
England & Wales	EU Directive 2002/91/EC	

Environmental Impact (CO <sub>2</sub> ) Rating		
	Current	Potential
Very environmentally friendly - lower CO <sub>2</sub> emissions		
(92 plus) A		89
(81-91) B		
(69-80) C	68	
(55-68) D		
(39-54) E		
(21-38) F		
(1-20) G		
Not environmentally friendly - higher CO <sub>2</sub> emissions		
England & Wales	EU Directive 2002/91/EC	



Telephone: 01908 630 100 | [www.stratfords.co.uk](http://www.stratfords.co.uk)  
36 Wharfside, Fenny Stratford, MK2 2AS





**TOTAL APPROX. FLOOR AREA 560 SQ.FT. (52.0 SQ.M.)**

Whilst every attempt has been made to ensure the accuracy of the floor plan contained here, measurements of doors, windows, rooms and any other items are approximate and no responsibility is taken for any error, omission, or mis-statement. This plan is for illustrative purposes only and should be used as such by any prospective purchaser. The services, systems and appliances shown have not been tested and no guarantee as to their operability or efficiency can be given

Made with Metropix ©2018