



**35 Princes Street, Southport, PR8 1EG**

**£287.500**

**Subject to Contract**

Attention Investors and Buy to Let Buyers! This substantial property is currently divided into three, lovely, self-contained flats with separate leases, with the benefit of a Certificate of Lawful Use. The property is well presented, and has been well maintained and is currently fully let. The property is offered for sale with the benefit of the current tenants, which are on short-hold tenancy agreements. Situated in the town centre, convenient for all the facilities.

12A Anchor Street, Southport, Merseyside PR9 0UT  
01704 512121 F 01704 512122  
sales@christinsley.co.uk www.christinsley.co.uk

*Southport's Estate Agent*

## Communal Entrance

### Ground Floor Flat

#### Entrance Hall

Utility cupboard and plumbing for washing machine.

**Lounge** - 3.05m x 4.65m (10'0" x 15'3")

Upvc double glazed windows and double doors to a private courtyard rear garden.

**Kitchen** - 1.85m x 3.96m (6'1" x 13'0")

Upvc double glazed windows, single drainer stainless steel sink unit, base units, wall cupboards, working surfaces. Built-in oven and hob, plumbing for washing machine, 'Main' gas central heating boiler.

**Bathroom** - 2.24m x 1.93m (7'4" x 6'4")

Wash hand basin, low level Wc, panelled bath with shower, tiled walls and floor. Upvc double-glazed windows.

**Bedroom 1** - 4.9m x 3.71m (16'1" x 12'2")

Upvc double glazed window.

#### Bedroom 2

Upvc double glazed window.

### First Floor Flat

#### Entrance Hall

**Lounge** - 3.91m x 2.29m (12'10" x 7'6")

Upvc double glazed doors to a 'juliet' balcony.

**Kitchen** - 3m x 2.69m (9'10" x 8'10")

Upvc double glazed window. Sink unit, base units, wall cupboards, working surfaces, oven, hob and hood. 'Glow worm' gas central heating boiler.

**Bedroom 1** - 5.03m x 3.73m (16'6" x 12'3")

Upvc double glazed window.

**Bedroom 2** - 4.06m x 1.83m (13'4" x 6'0")

Upvc double glazed window.

**Bathroom** - 1.96m x 2.21m (6'5" x 7'3")

Panelled bath and shower, pedestal wash hand basin, low level wc, part wall tiling, Upvc double glazed window.

### Second Floor Flat

#### Entrance Hall

**Lounge** - 3.91m x 3.12m (12'10" x 10'3")

Upvc double doors to a 'juliet' balcony.

**Kitchen** - 2.69m x 3.96m (8'10" x 13'0")

Upvc double-glazed window. Single drainer stainless steel sink unit, base units with cupboards and drawers, wall cupboards, working surfaces. 'Glow worm' central heating boiler. Built-in oven and hob.

**Bedroom 1** - 4.22m x 2.95m (13'10" x 9'8")

Upvc double glazed window.

**Bedroom 2** - 2.9m x 1.93m (9'6" x 6'4")

Upvc double glazed window.

**Bathroom** - 2.11m x 2.24m (6'11" x 7'4")

Panelled bath, shower, pedestal wash hand basin, low-level Wc, half-tiled walls. Upvc double-glazed window.

### Outside

Garden area for the benefit of the ground floor flat. Hardstanding to the front for parking.

### Tenure

The sellers own the Freehold of the property and the three flats are individually leasehold for the remainder of a term of 999 years from 25th June 2003.

### Services

Three independent gas supplies, coin-operated electricity supplies and a bulk water meter.

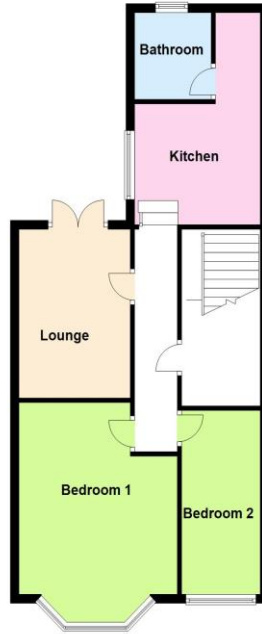
### Council Tax

Sefton MBC, The Council Tax band for each individual flat is Band A.

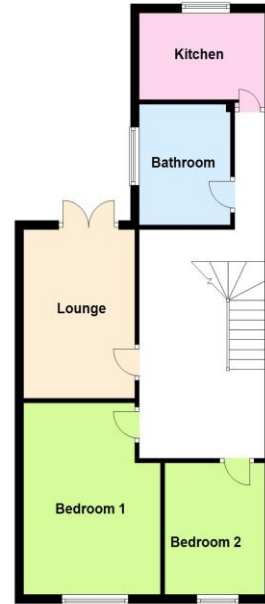
Ground Floor Flat



First Floor Flat

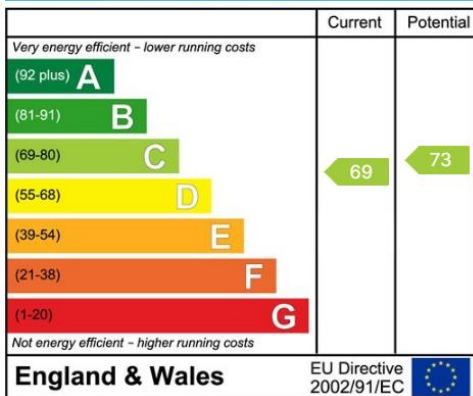


Second Floor Flat

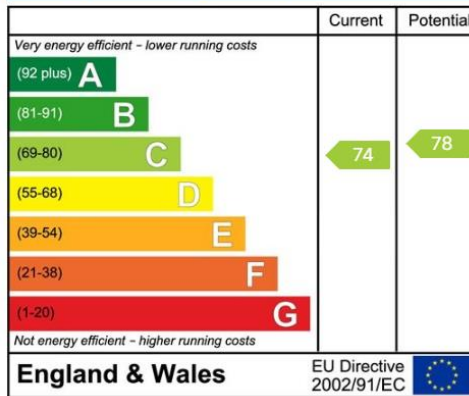


Floor plans are for illustration only and not to scale  
Plan produced using PlanUp.

Energy Efficiency Rating



Energy Efficiency Rating



Energy Efficiency Rating

