

14 Bridge Street, Thetford, Norfolk, IP24 3AA
Tel: 01842 754161
thetford@chilternsestateagents.co.uk
www.shiresresidential.com

chilterns

Estate & Letting Agents



Grove Lane, Thetford, IP24 2HY

Rent - £1,350 PCM Deposit - £1,500

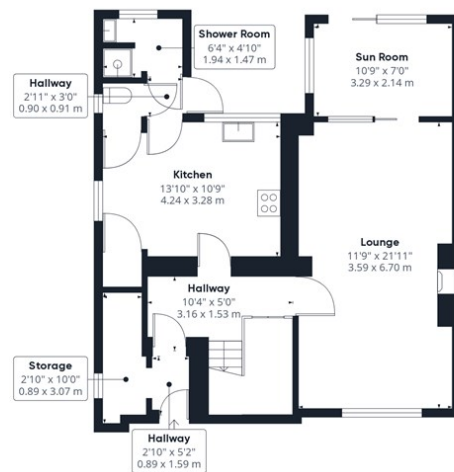
A delightful semi-detached house offers a perfect blend of character and modern living. With a generous space of 1,371 square feet, this older-style property boasts an inviting atmosphere that is sure to appeal to families and professionals alike.

The home features two spacious reception rooms, providing ample space for relaxation and entertaining guests. The well-appointed layout includes five comfortable bedrooms, ensuring that there is plenty of room for everyone.

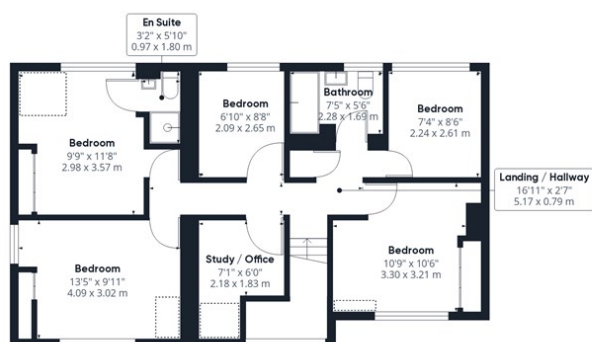
- CLOSE TO TOWN CENTRE AND LOCAL AMENITIES
- FIVE BEDROOMS
- ENCLOSED REAR GARDEN
- GAS CENTRAL HEATING
- STUDY / OFFICE
- SEMI-DETACHED HOME
- GARAGE & OFF-ROAD PARKING
- AVAILABLE FOR LONG TERM LET



Council Tax Band: C - EPC Rating: D 65

Approximate total area^(a)1371.58 ft²127.42 m²

Reduced headroom

30.99 ft²2.88 m²

Excluding balconies and terraces

Reduced headroom
(below 1.5m/4.92ft)

While every attempt has been made to ensure accuracy, all measurements are approximate, not to scale. This floor plan is for illustrative purposes only.

GIRAFFE360

