



Gloucester Way, Thetford, IP24 1DL

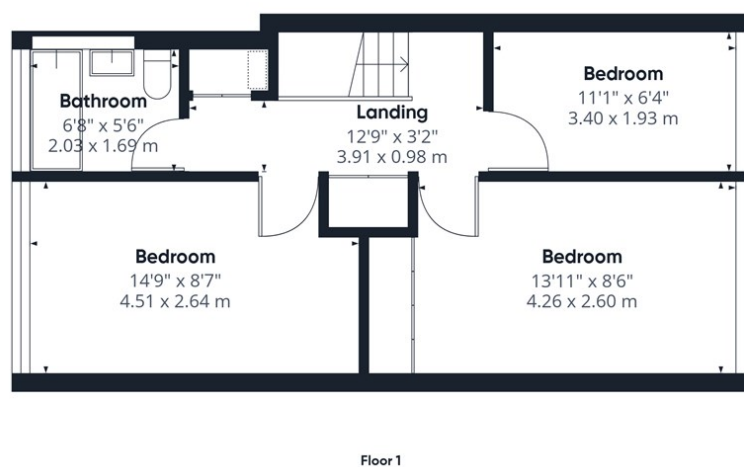
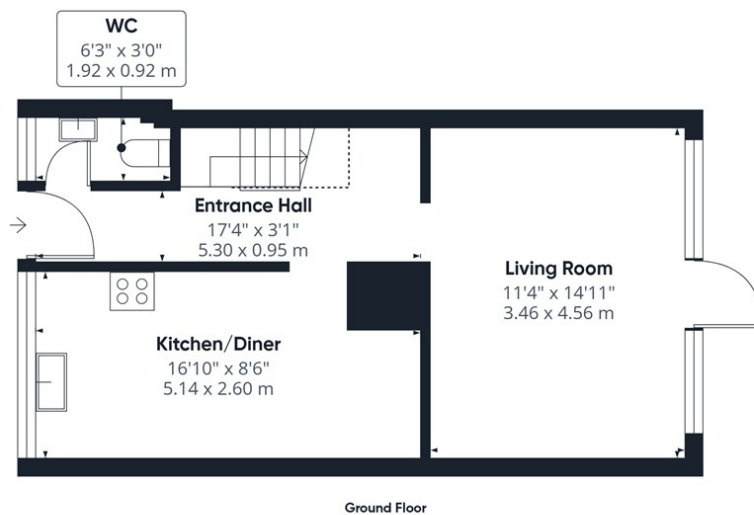
Rent - £150,000 Deposit -

A three bedroom mid terraced house with garage, situated on the Abbey development in Thetford, an area popular with investment and first time buyers.

- LOCATED ON THE ABBEY DEVELOPMENT
- WALKING DISTANCE OF THE TRAIN STATION
- THREE BEDROOMS
- GAS HEATING SYSTEM VIA RADIATORS
- ENCLOSED REAR GARDEN
- AREA FAVOURED BY INVESTORS & FIRST TIME BUYERS
- MID TERRACED HOUSE
- DOWNSTAIRS CLOAKROOM
- SINGLE GARAGE & PARKING
- NO ONWARD CHAIN!



Council Tax Band: A - EPC Rating: C 77



Approximate total area⁽¹⁾

854 ft²79.3 m²

Reduced headroom

15 ft²1.4 m²

(1) Excluding balconies and terraces

Reduced headroom

Below 5 ft/1.5 m

Calculations reference the RICS IPMS 3C standard. Measurements are approximate and not to scale. This floor plan is intended for illustration only.

GIRAFFE360

