



Rectory Gardens, Norwich, NR9 4RG

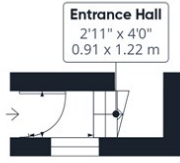
Rent - Offers Over £160,000 Deposit -

Are you searching for a two bedroom home in Hingham? This first floor apartment would make an ideal first time or investment purchase!

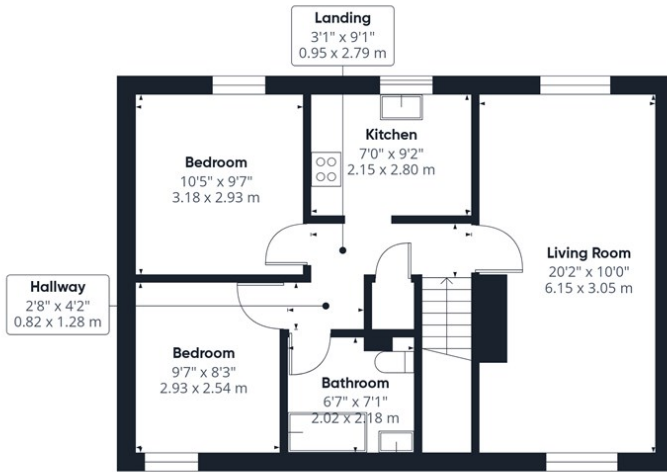
- POPULAR MARKET TOWN OF HINGHAM
- WELL PRESENTED THROUGHOUT
- FIRST FLOOR TWO BEDROOM APARTMENT
- FULLY ENCLOSED GARDEN
- ALLOCATED PARKING SPACE
- CONVENIENTLY SITUATED FOR LOCAL AMENITIES
- CUL-DE-SAC POSITION
- MODERN KITCHEN AND BATHROOM SUITE
- SINGLE GARAGE
- VENDOR HAS FOUND THEIR ONWARD PURCHASE!



Council Tax Band: A - EPC Rating: D 55



Ground Floor



Floor 1

Approximate total area⁽¹⁾
563 ft²
52.2 m²

(1) Excluding balconies and terraces

Calculations reference the RICS IPMS 3C standard. Measurements are approximate and not to scale. This floor plan is intended for illustration only.

GIRAFFE360

