



Hogarth Crescent, Colliers Wood

£385,000 Leasehold

2 Double Bedrooms - Split-Level Maisonette - Modern Kitchen

Large Living/Diner - Modern Shower Room - Double Glazed

Front Garden - Walking Distance To Colliers Wood Tube - Allocated Parking

No Service Charges - Ideal For First Time Buyers & Investors - EPC 'C'

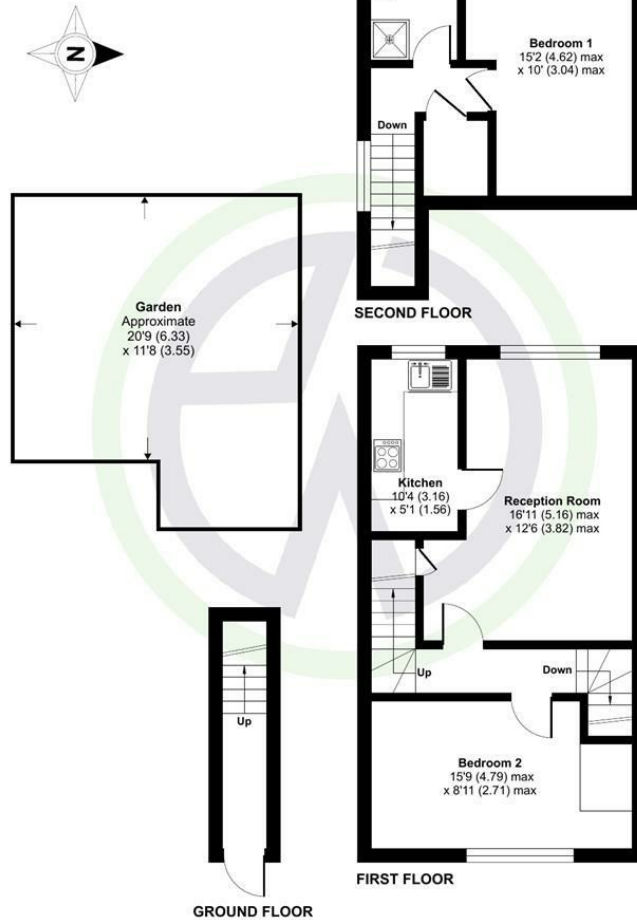


Hogarth Crescent, Colliers Wood

Hogarth Crescent, London, SW19

Approximate Area = 752 sq ft / 69.8 sq m

For identification only - Not to scale



Floor plan produced in accordance with RICS Property Measurement 2nd Edition, Incorporating International Property Measurement Standards (IPMS2 Residential). Produced for Eddison White. REF: 1249366. © nidecom 2025.



London Borough of Merton
Tax Band C
Leasehold

Energy Efficiency Rating	
Current	Potential
Very energy efficient - lower running costs	
(92 plus) A	
(81-91) B	
(69-80) C	
(55-68) D	
(39-54) E	
(21-38) F	
(1-20) G	
Not energy efficient - higher running costs	
74	77
England & Wales	
EU Directive 2002/91/EC	

Environmental Impact (CO ₂) Rating	
Current	Potential
Very environmentally friendly - lower CO ₂ emissions	
(92 plus) A	
(81-91) B	
(69-80) C	
(55-68) D	
(39-54) E	
(21-38) F	
(1-20) G	
Not environmentally friendly - higher CO ₂ emissions	
England & Wales	
EU Directive 2002/91/EC	

These details and any pictures or plans represent our opinion and are given in good faith for guidance only. They must not be construed as statements or fact. These particulars do not constitute part of an offer or contract. We have not tested the services, appliances or specified fittings and would highly recommend a purchaser to carry out their own survey on the property.



company registration no. 05068639 • vat registration no. 843560623

