



Shaldon Drive, Morden

Guide Price £680,000 Freehold

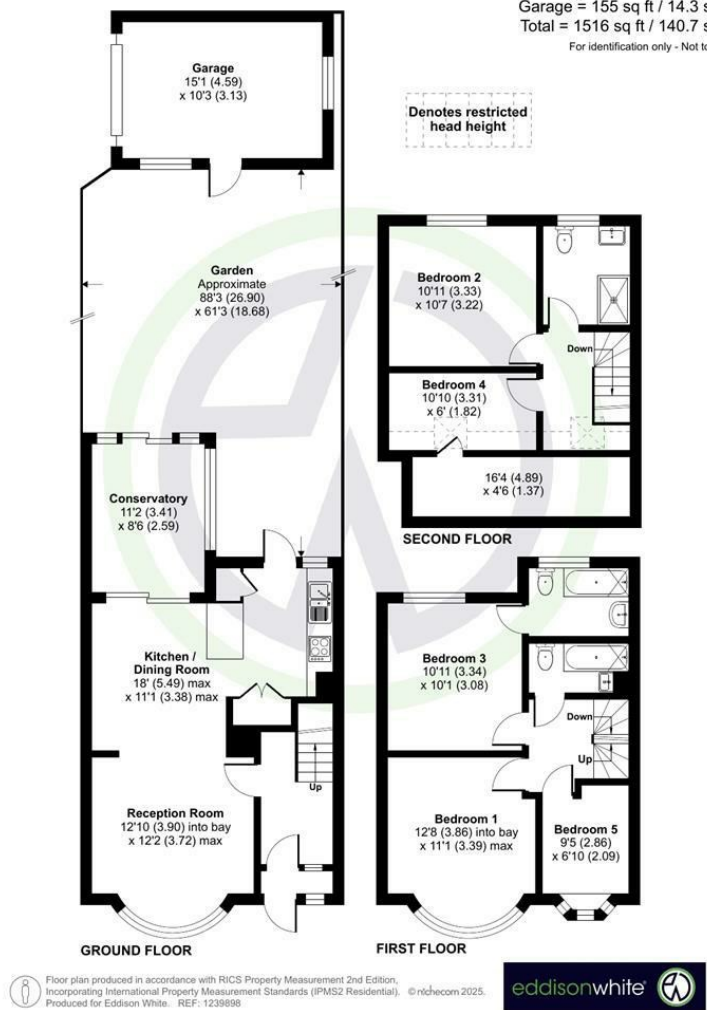
Four/Five Bedroom - Family House - Three Bathrooms - Semi Detached
Open Plan Lounge/Dining/Open Plan Kitchen - Conservatory - EPC D
88ft Garden - Off Street Parking - Garage - Extended - Good Condition
Popular Location - Freehold - Still Potential To Extend If Needed (STP)



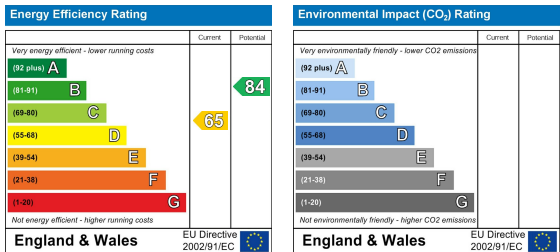
Shaldon Drive, Morden

Shaldon Drive, Morden, SM4

Approximate Area = 1253 sq ft / 116.4 sq m
Limited Use Area(s) = 108 sq ft / 10 sq m
Garage = 155 sq ft / 14.3 sq m
Total = 1516 sq ft / 140.7 sq m
For identification only - Not to scale



London Borough of Merton
Tax Band D
Freehold



These details and any pictures or plans represent our opinion and are given in good faith for guidance only. They must not be construed as statements or fact. These particulars do not constitute part of an offer or contract. We have not tested the services, appliances or specified fittings and would highly recommend a purchaser to carry out their own survey on the property.