

eddissonwhite®




34 christchurch road, colliers wood, SW19 2NX

85 the broadway, wimbledon, SW19 1QE

109 london road, morden, SM4 5HP

 eddissonwhite.co.uk

 020 8540 9828



## Romany Gardens, Sutton

Guide Price £625,000 Freehold

Three Bedroom - Semi Detached House- Through Lounge - Front Porch  
Kitchen - Conservatory - Family Bathroom - Potential To Extend (STP)  
Off Street Parking - Beautifully Presented - Large Landscaped Garden  
Large Pond - Popular Quiet Location - Sought After Location - EPC: C



company registration no. 05068639 • vat registration no. 843560623



# Romany Gardens, Sutton

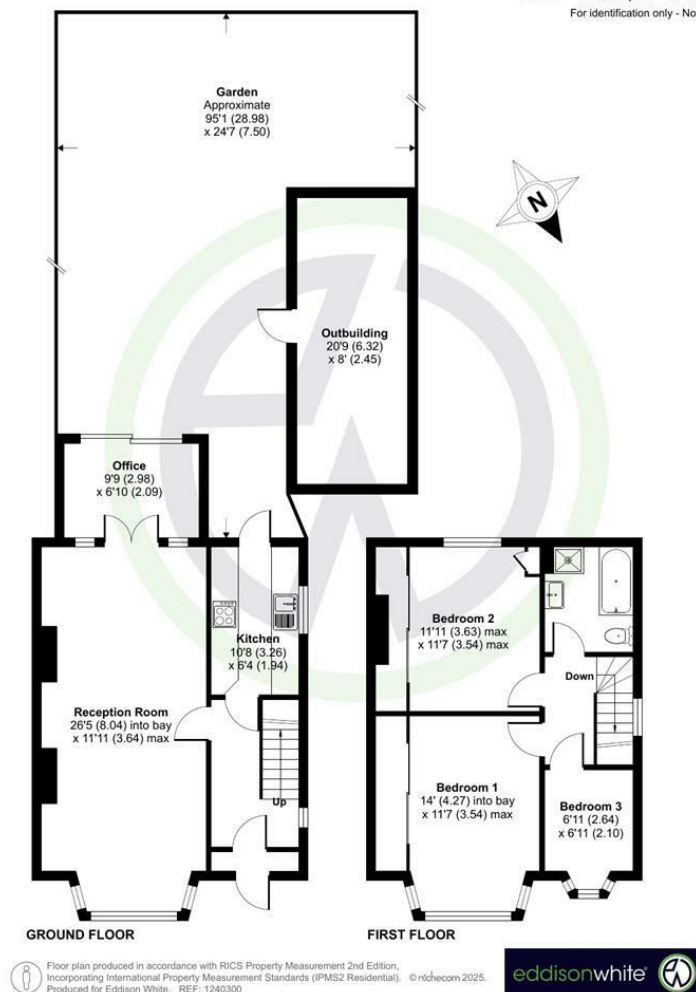
## Romany Gardens, Sutton, SM3

Approximate Area = 992 sq ft / 92.1 sq m

Outbuilding = 167 sq ft / 15.5 sq m

Total = 1159 sq ft / 107.6 sq m

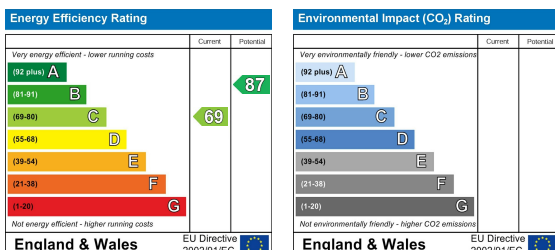
For identification only - Not to scale



London Borough of Merton

Tax Band E

Freehold



These details and any pictures or plans represent our opinion and are given in good faith for guidance only. They must not be construed as statements or fact. These particulars do not constitute part of an offer or contract. We have not tested the services, appliances or specified fittings and would highly recommend a purchaser to carry out their own survey on the property.