



Hogarth Crescent, Colliers Wood

£395,000 Leasehold

2 Double Bedrooms - Split-Level Maisonette - Private Garden
Quiet & Popular Development - Off-Street Parking - Modern Kitchen
Living/Dining Room - Gas Central Heating - New Carpet & Freshly Painted
No Service Charges - No Onward Chain - Long Lease - EPC 'C'

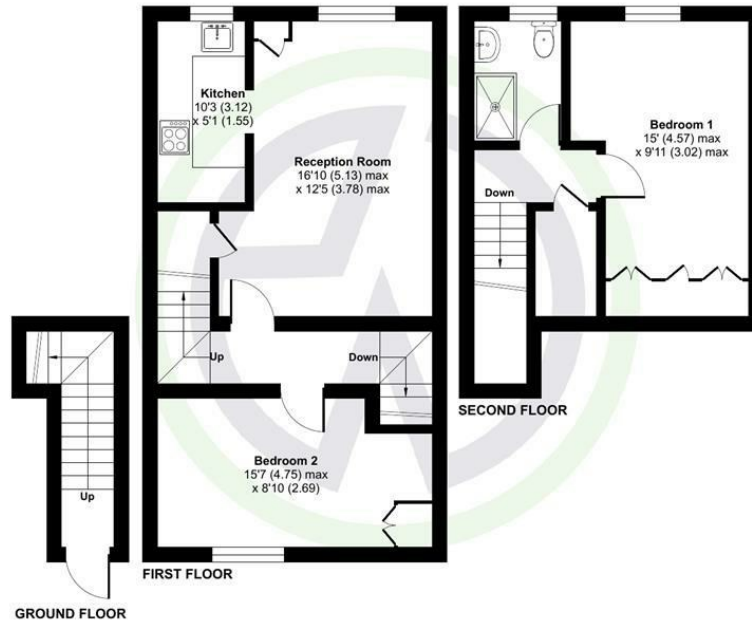


Hogarth Crescent, Colliers Wood

Hogarth Crescent, London, SW19

Approximate Area = 788 sq ft / 73.2 sq m

For identification only - Not to scale



Floor plan produced in accordance with RICS Property Measurement Standards incorporating International Property Measurement Standards (IPMS2 Residential). © ritchecom 2024. Produced for Edisson White. REF: 1183418



London Borough of Merton
Tax Band C
Leasehold

Energy Efficiency Rating		Current	Potential
Very energy efficient - lower running costs	(92 plus) A		
(81-91) B			
(69-80) C			
(55-68) D			
(39-54) E			
(21-38) F			
(1-20) G			
Not energy efficient - higher running costs			
England & Wales		77	77
	EU Directive 2002/91/EC		

Environmental Impact (CO ₂) Rating		Current	Potential
Very environmentally friendly - lower CO ₂ emissions	(92 plus) A		
(81-91) B			
(69-80) C			
(55-68) D			
(39-54) E			
(21-38) F			
(1-20) G			
Not environmentally friendly - higher CO ₂ emissions			
England & Wales			
	EU Directive 2002/91/EC		

These details and any pictures or plans represent our opinion and are given in good faith for guidance only. They must not be construed as statements or fact. These particulars do not constitute part of an offer or contract. We have not tested the services, appliances or specified fittings and would highly recommend a purchaser to carry out their own survey on the property.



company registration no. 05068639 • vat registration no. 843560623

