



Durnsford Road, Wimbledon

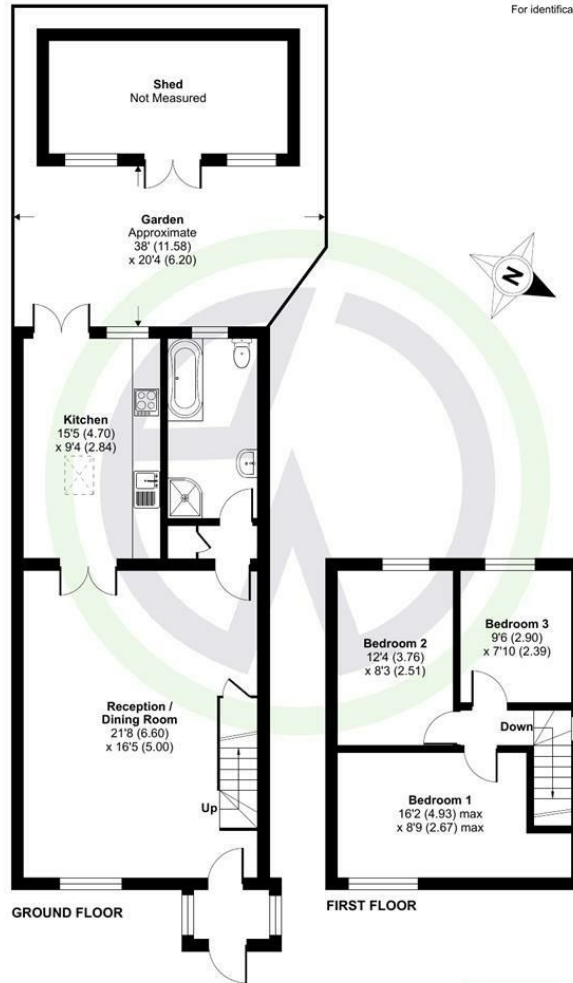
Guide Price £680,000 Freehold

Beautifully Presented - 3 Bedrooms - Close to Wimbledon Town Centre
Double Glazed - Gas Central Heating - Off Road Parking/2 Cars - EPC C
Rear Extension - Potential To Extend Into Loft (STPP) - Private Garden
Easy Access To Wimbledon Park Underground Station - Semi Detached



Durnsford Road, Wimbledon

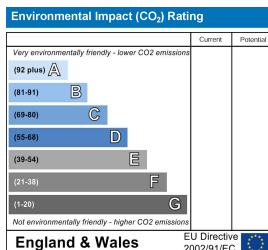
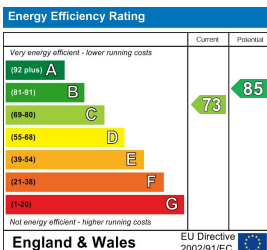
Durnsford Road, London, SW19
 Approximate Area = 1007 sq ft / 93.5 sq m (excludes shed)
 For identification only - Not to scale



Floor plan produced in accordance with RICS Property Measurement Standards incorporating International Property Measurement Standards (IPMS2 Residential). © ricscom 2024. Produced for Edissonwhite. REF: 1166327



London Borough of Merton
 Tax Band D
 Freehold



These details and any pictures or plans represent our opinion and are given in good faith for guidance only. They must not be construed as statements or fact. These particulars do not constitute part of an offer or contract. We have not tested the services, appliances or specified fittings and would highly recommend a purchaser to carry out their own survey on the property.



company registration no. 05068639 • vat registration no. 843560623

