



Sycamore Gardens, Mitcham

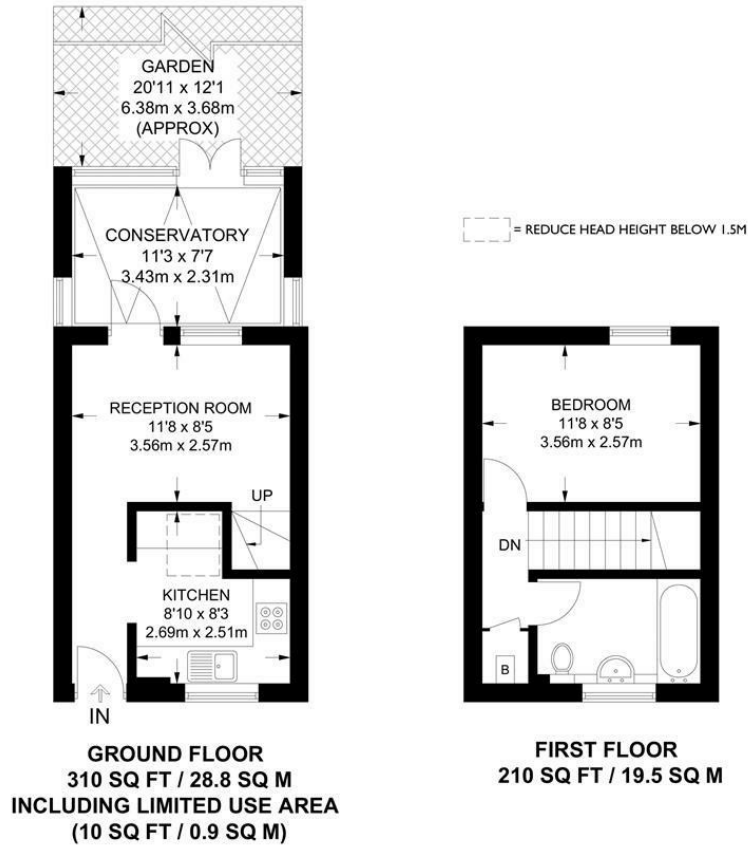
£350,000 Freehold

1 Double Bedroom House - Private Garden - Proven Investment Yield
Modern Kitchen - Contemporary Shower Room - Conservatory
Off-Street Driveway Parking - Walking Distance To Tube - EPC 'D'
Currently Tenanted - 5.2% Annual Return - Colliers Wood Borders



Sycamore Gardens, Mitcham

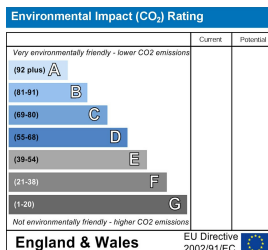
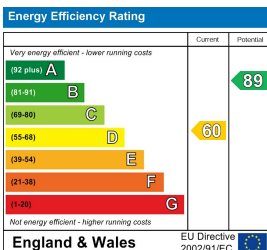
APPROXIMATE FLOOR AREA = 520 SQ FT / 48.3 SQ M
INCLUDING LIMITED USE AREA (10 SQ FT / 0.9 SQ M)



Surveyed and drawn in accordance with the International Property Measurement Standards (IPMS 2: Residential) FOXTONS.CO.UK



London Borough of Merton
Tax Band C
Freehold



These details and any pictures or plans represent our opinion and are given in good faith for guidance only. They must not be construed as statements or fact. These particulars do not constitute part of an offer or contract. We have not tested the services, appliances or specified fittings and would highly recommend a purchaser to carry out their own survey on the property.



company registration no. 05068639 • vat registration no. 843560623

