



Holne Chase, Morden

Guide Price £695,000 Freehold

NO ONWARD CHAIN!! - End of Terrace - 3 Bedrooms - 2 Bathrooms
Potential to Extend (STP) - Off Street Parking Garage - EPC D
Extended On The Ground Floor - Beautifully Presented Throughout
Landscape Garden - Open Plan L-Shaped Lounge/Kitchen/Dining Room

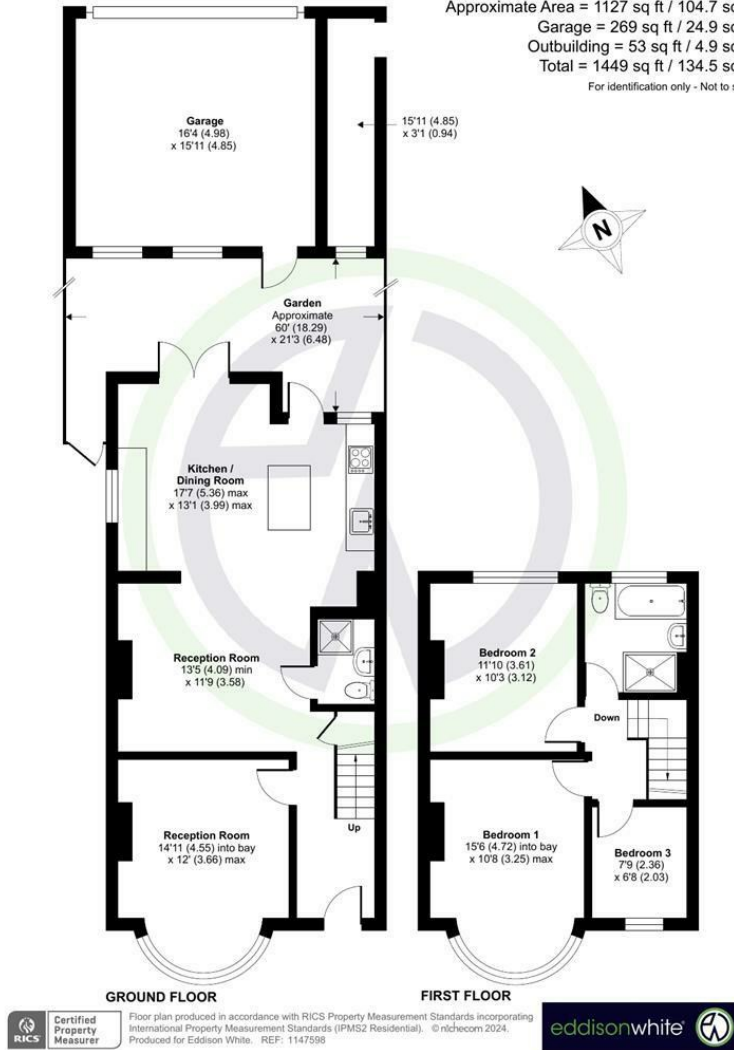


Holne Chase, Morden

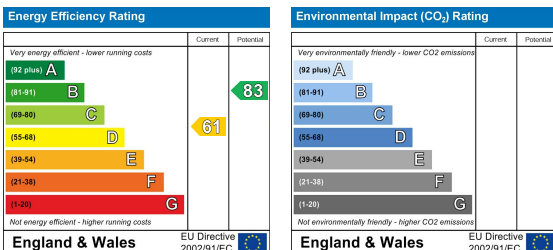
Holne Chase, Morden, SM4

Approximate Area = 1127 sq ft / 104.7 sq m
 Garage = 269 sq ft / 24.9 sq m
 Outbuilding = 53 sq ft / 4.9 sq m
 Total = 1449 sq ft / 134.5 sq m

For identification only - Not to scale



London Borough of Merton
 Tax Band E
 Freehold



These details and any pictures or plans represent our opinion and are given in good faith for guidance only. They must not be construed as statements or fact. These particulars do not constitute part of an offer or contract. We have not tested the services, appliances or specified fittings and would highly recommend a purchaser to carry out their own survey on the property.