

eddissonwhite®



34 christchurch road, colliers wood, SW19 2NX
85 the broadway, wimbledon, SW19 1QE
109 london road, morden, SM4 5HP

W eddissonwhite.co.uk
t 020 8540 9828



Lyveden Road, Colliers Wood

£735,000 Freehold

3 Bedrooms - Double Through Reception - Freehold House
South Facing Garden - Modern Bathroom - EPC Band 'C'
Extension Potential (STPP) - Excellent Local Schools
Tooting/Colliers Wood Borders - Short Walk To Tube & Train



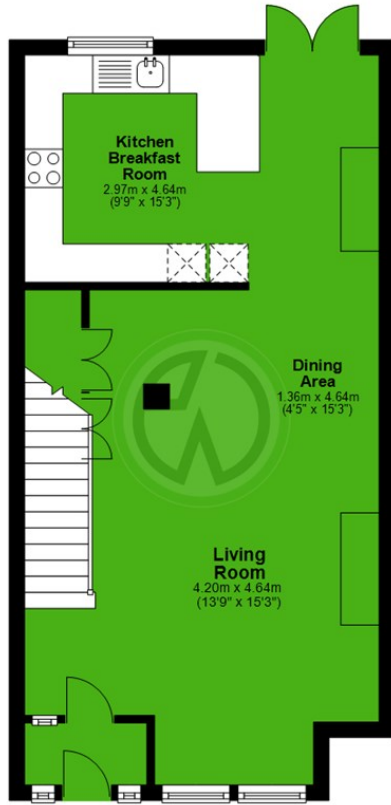
company registration no. 05068639 • vat registration no. 843560623



Lyveden Road, Colliers Wood

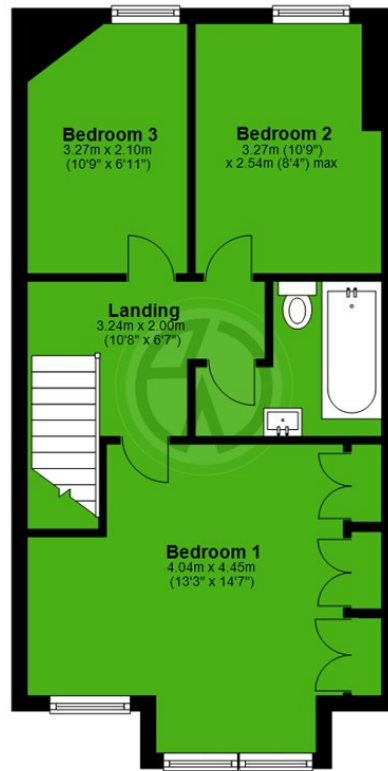
Ground Floor

Approx. 43.6 sq. metres (468.8 sq. feet)



First Floor

Approx. 42.4 sq. metres (456.7 sq. feet)



Total area: approx. 86.0 sq. metres (925.5 sq. feet)

Whilst every attempt has been made to ensure the accuracy of the floor plan, measurements of doors, windows and rooms are approximate and no responsibility is taken for any error, omission or misstatement. These plans are for representation only and should be used as such by prospective purchasers. Specifically no guarantee is given on the gross internal floor area of the property if quoted on this plan and any figure given is for guidance only and should not be relied on as a basis of valuation.
Plan produced using PlanUp.

London Borough of Merton
Tax Band D
Freehold

Energy Efficiency Rating	
Current	Potential
Very energy efficient - lower running costs	
(92 plus) A	
(81-91) B	
(69-80) C	
(55-68) D	
(39-54) E	
(21-38) F	
(1-20) G	
Not energy efficient - higher running costs	
	89
	69
EU Directive 2002/91/EC	

Environmental Impact (CO ₂) Rating	
Current	Potential
Very environmentally friendly - lower CO ₂ emissions	
(92 plus) A	
(81-91) B	
(69-80) C	
(55-68) D	
(39-54) E	
(21-38) F	
(1-20) G	
Not environmentally friendly - higher CO ₂ emissions	
EU Directive 2002/91/EC	

These details and any pictures or plans represent our opinion and are given in good faith for guidance only. They must not be construed as statements or fact. These particulars do not constitute part of an offer or contract. We have not tested the services, appliances or specified fittings and would highly recommend a purchaser to carry out their own survey on the property.