



Courtney Road, Colliers Wood

£540,000 Leasehold

2 Large Double Bedrooms - Split Level - Converted House
Private Landscaped Garden - Modern Kitchen - Living/Diner
2 Bath/Shower Rooms - Stylish & Elegant Design - EPC 'D'
Short Walk To Colliers Wood Tube - No Service Charges

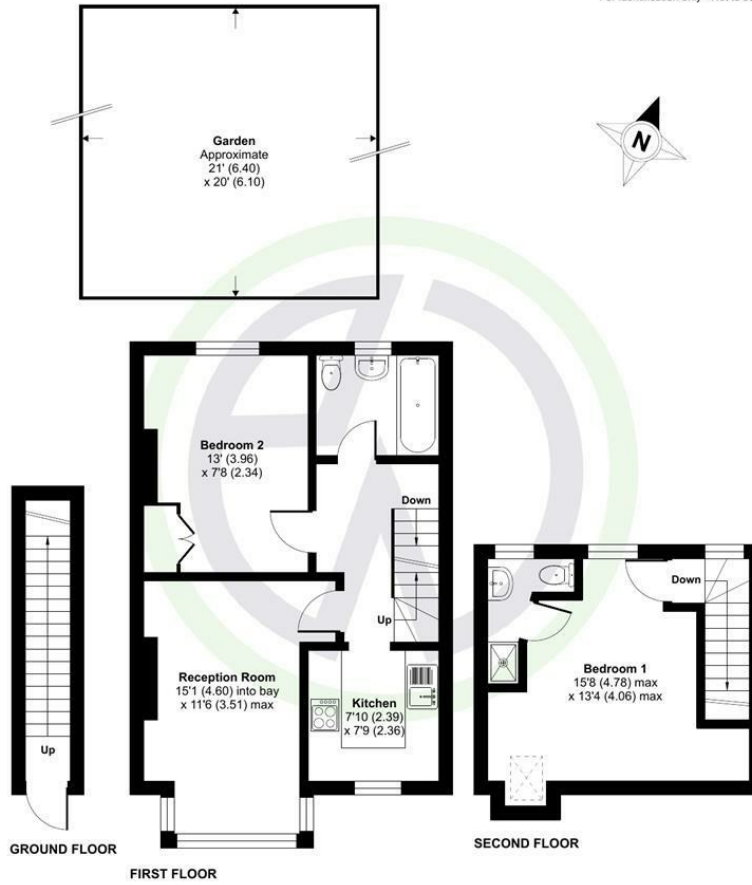


Courtney Road, Colliers Wood

Courtney Road, London, SW19

Approximate Area = 732 sq ft / 68 sq m

For identification only - Not to scale



Floor plan produced in accordance with RICS Property Measurement Standards incorporating International Property Measurement Standards (IPMS2 Residential). © ritchecom 2024. Produced for Edissonwhite. REF: 1122639



London Borough of Merton
Tax Band B
Leasehold

Energy Efficiency Rating		Current	Potential
Very energy efficient - lower running costs			
(92 plus) A			
(81-91) B			
(69-80) C			
(55-68) D			
(39-54) E			
(21-38) F			
(1-20) G			
Not energy efficient - higher running costs			
England & Wales		64	77
EU Directive 2002/91/EC			

Environmental Impact (CO ₂) Rating		Current	Potential
Very environmentally friendly - lower CO ₂ emissions			
(92 plus) A			
(81-91) B			
(69-80) C			
(55-68) D			
(39-54) E			
(21-38) F			
(1-20) G			
Not environmentally friendly - higher CO ₂ emissions			
England & Wales			
EU Directive 2002/91/EC			

These details and any pictures or plans represent our opinion and are given in good faith for guidance only. They must not be construed as statements or fact. These particulars do not constitute part of an offer or contract. We have not tested the services, appliances or specified fittings and would highly recommend a purchaser to carry out their own survey on the property.



company registration no. 05068639 • vat registration no. 843560623

