



MORGAN ASSOCIATES

ESTATE & LETTINGS AGENCY



36, Nettleton Road,
Cheltenham GL51 6NS
Guide price £350,000



3



1



3



D

36, Nettleton Road,
Cheltenham GL51 6NS

A three bedroom, semi-detached chalet style house within easy reach of central Cheltenham.

Full Description

Nettleton Road in Cheltenham offers a peaceful leafy location, perfect for families and tucked away on a residential street. With close proximity to the pretty Hatherley Brook area for green walks, and within a short distance to an Ofsted "outstanding" rated school and convenient commuting routes in and out of Cheltenham.

The frontage of the property is in the chalet style, popular in the local area. It offers a driveway with parking for multiple vehicles and side access to the garden and garage (used for storage, not vehicular use.)

The downstairs of the property has an extended layout with a spacious living room, snug area, dining area, kitchen with integrated appliances and optional formal dining room or occasional fourth bedroom. The bathroom is conveniently located on the ground floor.

Upstairs, we have three bedrooms, the principal featuring a lovely large window with front facing views and inbuilt storage. The rear bedrooms have views over the south facing garden.





Further Information

Tenure: Freehold

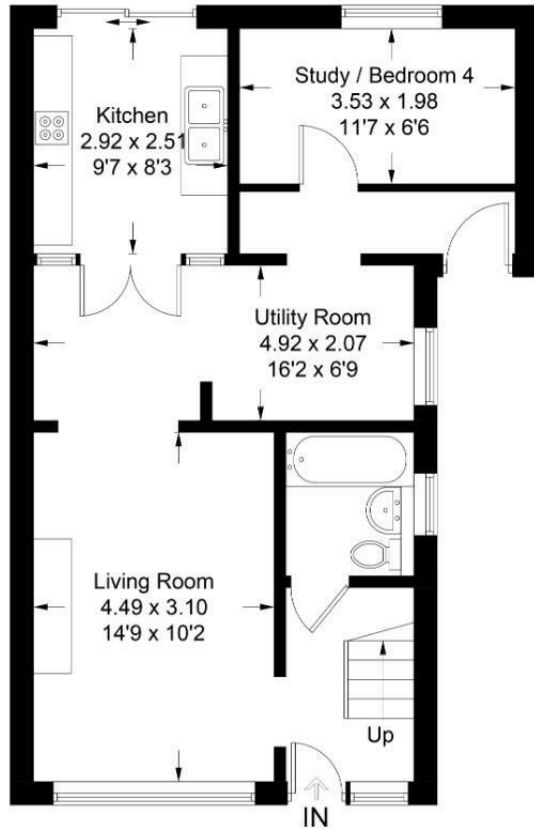
Services: Mains gas, electricity, water and drainage. Gas central heating.

Local authority: Cheltenham Borough Council

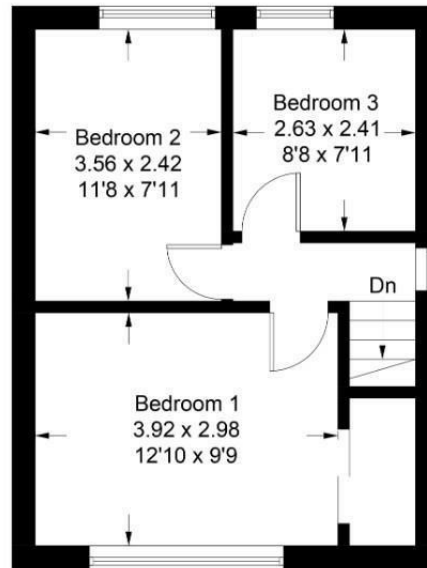
Council tax band: C

36 Nettleton Road

Approximate Gross Internal Area = 83.6 sq m / 900 sq ft



Ground Floor

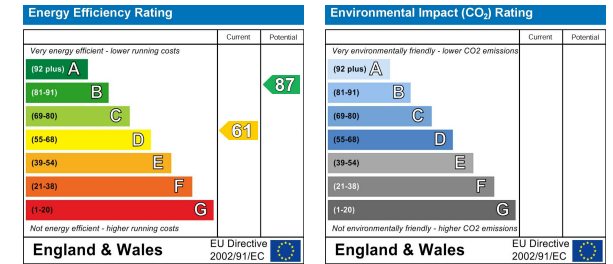


First Floor

Illustration for identification purposes only, measurements are approximate, not to scale. floorplansUsketch.com © (ID1121024)

These particulars, whilst believed to be accurate are set out as a general outline only for guidance and do not constitute any part of an offer or contract. Intending purchasers should not rely on them as statements of representation of fact, but must satisfy themselves by inspection or otherwise as to their accuracy. No person in this firm's employment has the authority to make or give any representation or warranty in respect of the property.

Energy Efficiency Graph



Area Map



Viewing

Please contact us on 01242 514 285 if you wish to arrange a viewing appointment for this property or require further information.

Rotunda Buildings Montpellier Exchange
Cheltenham
Gloucestershire
GL50 1SJ

T. 01242 514 285
E. sales@morgan-associates.co.uk
W. www.morgan-associates.co.uk