

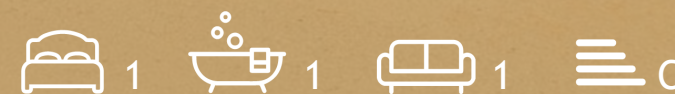


MORGAN ASSOCIATES

ESTATE & LETTINGS AGENCY



Flat 3, 8, Queens Parade,  
Cheltenham GL50 3BB  
Guide price £295,000



## Flat 3, 8, Queens Parade, Cheltenham GL50 3BB

A beautiful one bedroom apartment situated within the desirable Queens Parade in Montpellier.

### Full Description

Upon entering the building, you are greeted by a grand communal hallway retaining many of the original regency features. These include the lofty ceiling heights, ceiling roses and decorative coving which are mirrored in the apartment. Boasting a superb situation on the raised ground floor, the drawing room and kitchen feature an open-plan design, yet a partition provides clear separation between the two spaces. Two wonderful sash windows allow for an abundance of natural light, creating a bright and inviting atmosphere. The bathroom exudes a luxurious and contemporary feel, having been beautifully finished and with ample space. The bedroom features another charming sash window overlooking the communal patio space. It boasts a large built-in wardrobe for ample storage and a mezzanine which provides extra space and functionality, a super extra for tucking things away!

Queens Parade is arguably one of Cheltenham's most prestigious locations. This grade II listed building sits at the forefront of Bayshill Road, overlooking a promenade of trees. Cheltenham is renowned for its stunning Regency buildings and Queens Parade is no exception. Just a stone's throw away from Montpellier which features fine dining and many boutique shops.

### Further Information





**Tenure: Leasehold - Share of Freehold**

**Lease Duration: 999 years from 1985 (960 years remaining).**

**Service Charge: £95 per month.**

**Ground Rent: N/A**

**Services: Mains electricity, water and drainage.**

**Council Tax Band: A**

**Local Authority: Cheltenham Borough Council. Tel. 01242 26 26 26**



## Queens Parade, Cheltenham

Approximate Gross Internal Area  
58 sq m / 624 sq ft

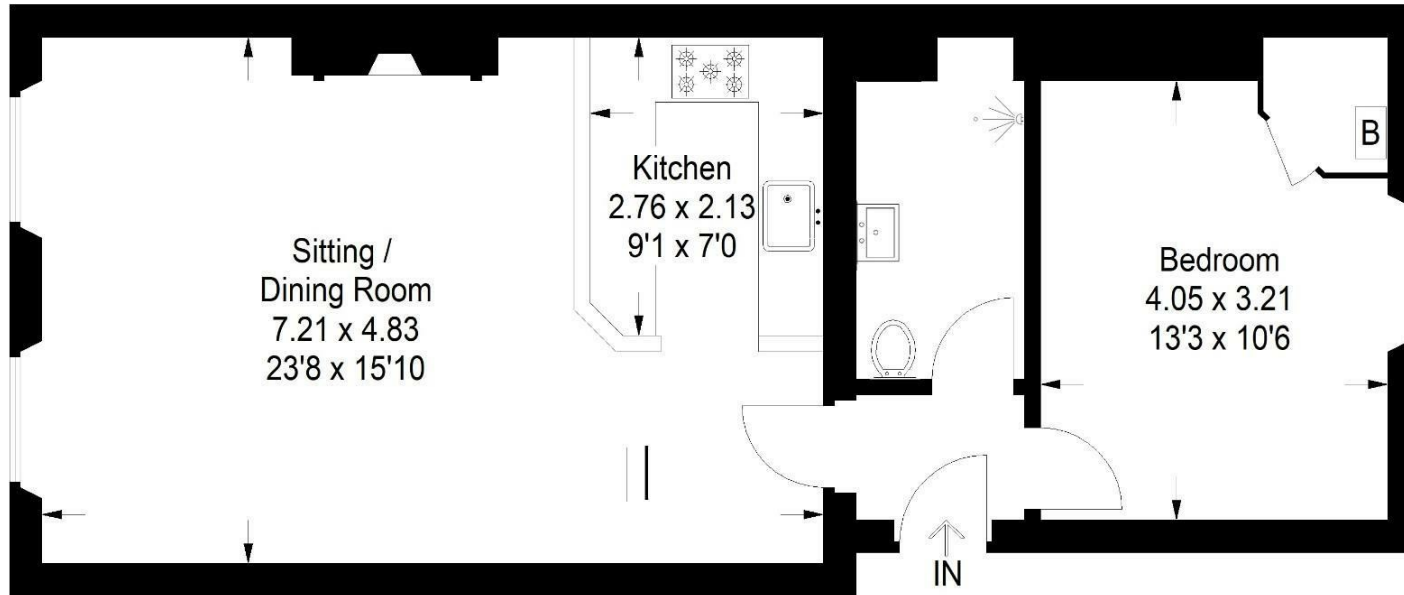
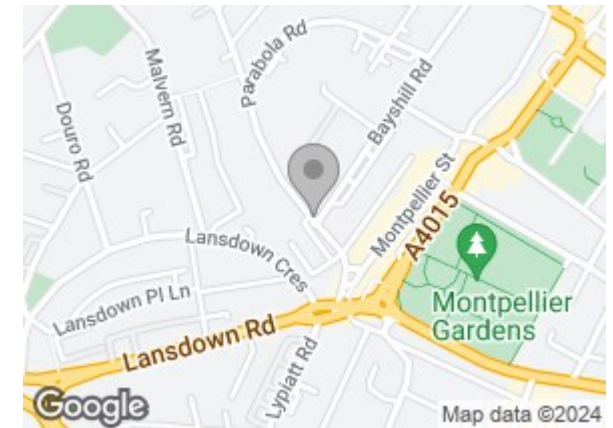


Illustration for identification purposes only, measurements are approximate, not to scale.  
FloorplansUsketch.com © 2024 (ID1105483)

### Area Map



### Viewing

Please contact us on 01242 514 285 if you wish to arrange a viewing appointment for this property or require further information.

Rotunda Buildings Montpellier Exchange  
Cheltenham  
Gloucestershire  
GL50 1SJ

T. 01242 514 285  
E. [sales@morgan-associates.co.uk](mailto:sales@morgan-associates.co.uk)  
W. [www.morgan-associates.co.uk](http://www.morgan-associates.co.uk)

These particulars, whilst believed to be accurate are set out as a general outline only for guidance and do not constitute any part of an offer or contract. Intending purchasers should not rely on them as statements of representation of fact, but must satisfy themselves by inspection or otherwise as to their accuracy. No person in this firm's employment has the authority to make or give any representation or warranty in respect of the property.