



Scan me to get a **detailed property report & valuation** on your house!



Finmere, Strawberry Fields
Offers Over £335,000

complete 
ESTATE AGENTS

Finmere, Strawberry Fields, Rugby

Nestled in the charming area of Finmere, within the desirable Strawberry Fields neighborhood of Rugby, this splendid detached house offers a perfect blend of comfort and modern living. With four generously sized bedrooms, this property is ideal for families seeking space and tranquility.

Upon entering, you are greeted by two inviting reception rooms, providing ample space for relaxation and entertaining guests. The layout is thoughtfully designed to create a warm and welcoming atmosphere, making it easy to envision family gatherings and social occasions. The property boasts two well-appointed bathrooms, ensuring convenience for all residents. The home's exterior is equally impressive, featuring a garage and parking space for two vehicles. One of the standout features of this property is the absence of an onward chain, making the buying process smoother and more straightforward. This is an excellent opportunity for those looking to move quickly into their new home without the usual delays.

In summary, this detached house in Finmere is a fantastic opportunity for anyone seeking a spacious family home in a peaceful setting. Call 01788 550800 today to view.

Entrance hall

Stairs rising to first floor landing door to

Lounge 13'10" x 12'11" (4.21 x 3.94)

Box bay window to front and door to

Dining room 9'8" x 8'11" (2.94 x 2.72)

Window to rear and door to

Kitchen 9'8" x 9'6" (2.94 x 2.89)

Comprehensive range of base and wall mounted units, built in oven and hob, inset sink, window to rear, under stairs storage cupboard and door to

Utility room

Range of base and wall mounted units with inset sink, door to rear garden, window to side and door to



Ground floor WC

Low flush WC, wall mounted wash hand basin and window to side

First floor landing

Doors off to all bedrooms and family bathroom

Bedroom 1 13'0" x 9'10" (3.95 x 3)

Two windows to front, built in wardrobes and door to

En suite shower room

Refitted en suite with single shower cubical, pedestal wash hand basin and low flush WC and window to side

Bedroom 2 9'5" x 9'0" (2.86 x 2.75)

Built in wardrobe and window to rear

Family bathroom

Newly refitted family bathroom. Pedestal wash hand basin, low flush WC, panel bath and window to rear

Bedroom 3 8'0" x 7'8" (2.43 x 2.33)

Built in wardrobe and window to rear

Bedroom 4 8'4" x 7'3" (2.54 x 2.20)

Window to front

Outside front

Block paved driveway with parking for two vehicles leading to single integral garage, pedestrian access to rear garden

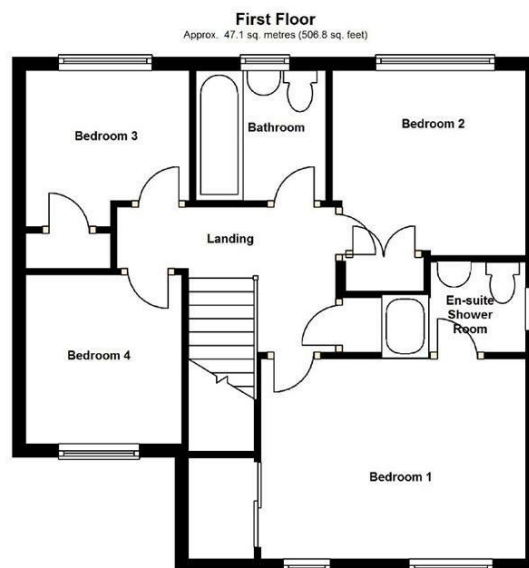
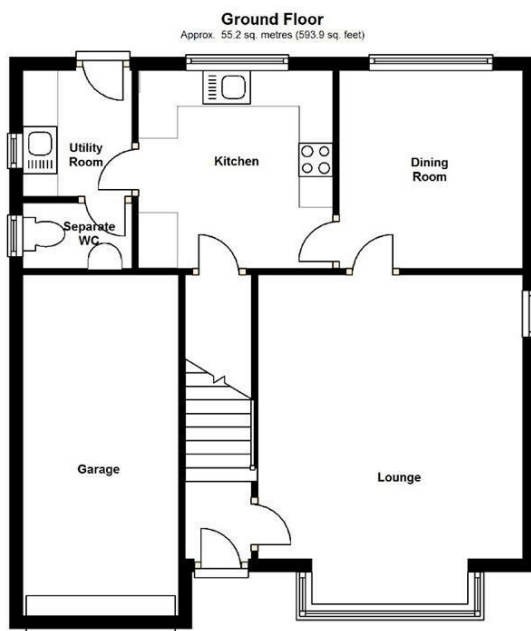
Rear garden

Fully enclosed, mostly laid to lawn and patio area

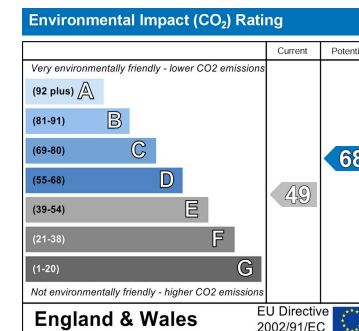
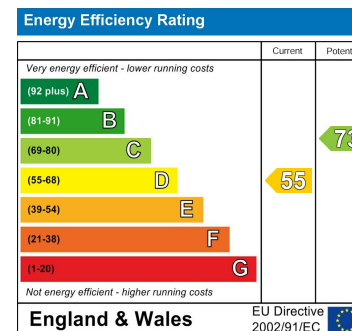
Location

Strawberry fields is located on the North side of Rugby. Rugby is a historic market town with a huge range of amenities for all ages. Coton Meadows is ideally positioned for A14 and M1/M6 motorway and having good access to Rugby train station with direct trains from Rugby-London Euston taking approx 54 minute. Rugby is renowned for great schools including "Rugby School" and also boasts grammar schools for girls and boys.





Total area: approx. 102.3 sq. metres (1100.8 sq. feet)



Misrepresentation Act 1967 - These particulars are believed to be correct but their accuracy is not guaranteed nor do they form part of any contract.

18 Church Street, Rugby, Warwickshire, CV21 3PU
T: 01788 550 800
sales@complete247.co.uk
www.complete247.co.uk

complete ●●●
ESTATE AGENTS