



Scan me to get a **detailed property report & valuation** on your house!



Cleveland Road,
Offers Over £320,000

complete ●●●
ESTATE AGENTS

Cleveland Road, , Bulkington

The property features three well-proportioned bedrooms and a beautifully presented bathroom. Each bedroom offers ample space. The bathroom is stylishly fitted and maintained to the highest standards, providing a tranquil setting for unwinding after a long day. One of the main highlights of this home is the spacious reception room, graced with a charming fireplace. This area offers a fantastic space for entertaining or simply enjoying a quiet evening in. This home also has a fantastic modern kitchen dining space to the rear of the property fully fitted modern kitchen with gas burning stove and double oven.

The location is another significant advantage of this property. It is conveniently situated close to public transport links, making commuting a breeze. It's also within proximity to a selection of reputable schools, making it a fantastic choice for families. Additionally, the presence of green spaces nearby offers ample opportunities for leisurely walks and outdoor enjoyment.

Entrance hall

Living room

Kitchen diner

w.c

Bedroom one

Bedroom two

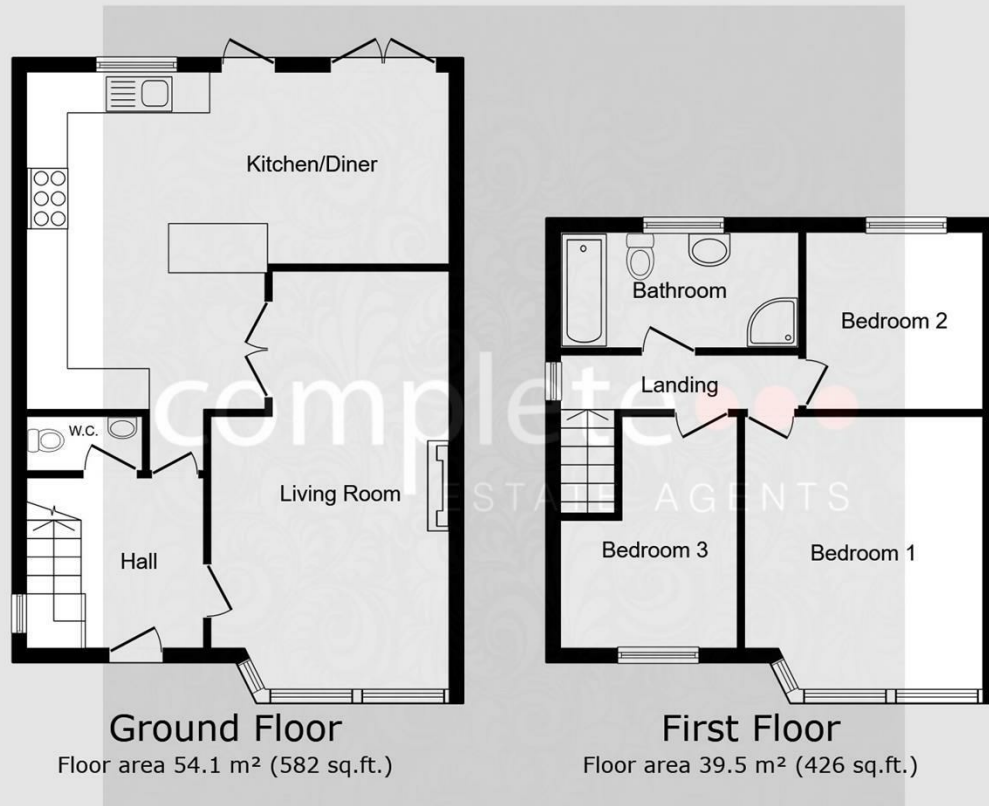
Bedroom three

Bathroom

Garage







Energy Efficiency Rating		Current	Potential
Very energy efficient - lower running costs			
(92 plus) A			
(81-91) B			
(69-80) C			
(55-68) D			
(39-54) E			
(21-38) F			
(1-20) G			
Not energy efficient - higher running costs			
England & Wales		EU Directive 2002/91/EC	

Environmental Impact (CO ₂) Rating		Current	Potential
Very environmentally friendly - lower CO ₂ emissions			
(92 plus) A			
(81-91) B			
(69-80) C			
(55-68) D			
(39-54) E			
(21-38) F			
(1-20) G			
Not environmentally friendly - higher CO ₂ emissions			
England & Wales		EU Directive 2002/91/EC	



TOTAL: 93.6 m² (1,008 sq.ft.)

This floor plan is for illustrative purposes only. It is not drawn to scale. Any measurements, floor areas (including any total floor area), openings and orientations are approximate. No details are guaranteed, they cannot be relied upon for any purpose and do not form any part of any agreement. No liability is taken for any error, omission or misstatement. A party must rely upon its own inspection(s). Powered by www.Propertybox.io

Misrepresentation Act 1967 - These particulars are believed to be correct but their accuracy is not guaranteed nor do they form part of any contract.

18 Church Street, Rugby, Warwickshire, CV21 3PU
 T: 01788 550 800
 sales@complete247.co.uk
 www.complete247.co.uk

complete ●●●
 ESTATE AGENTS