



Scan me to get a **detailed property report & valuation** on your house!



**Baileys Lane, Long Lawford**  
**Guide Price £120,000**

**complete** ●●●  
ESTATE AGENTS

# Baileys Lane, Long Lawford, Rugby

Welcome to Baileys Lane, Long Lawford, Rugby - a charming village location perfect for your dream home! A building plot that offers a fantastic opportunity with full planning permission for a two-bedroom detached bungalow on this plot. Imagine the possibilities of designing and building your own bespoke home in this picturesque setting. Whether you're looking to downsize, invest, or create a peaceful retreat, this provides a blank canvas to bring your vision to life. Don't miss out on the chance to make your mark in this lovely village - come and explore the potential of this wonderful land today!

## About Rugby

Rugby is a market town in Warwickshire, England, on the River Avon. The town has a population of 70,628 (2011 census[1]) making it the second largest town in the county. The enclosing Borough of Rugby has a population of 100,500 (2011 census). Rugby is 13 miles (21 km) east of Coventry, on the eastern edge of Warwickshire, near the borders with Northamptonshire and Leicestershire. The town is credited with being the birthplace of rugby football.

## Rugby Borough Council

Rugby Borough Council,  
Town Hall,  
Evreux Way,  
Rugby  
CV21 2RR

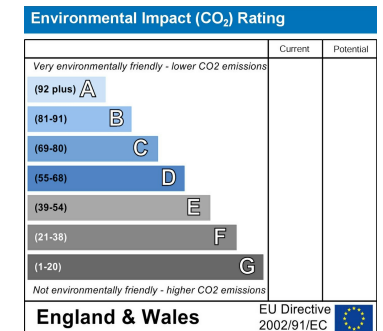
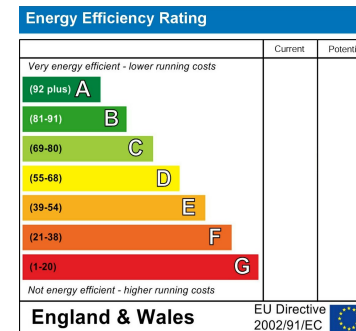
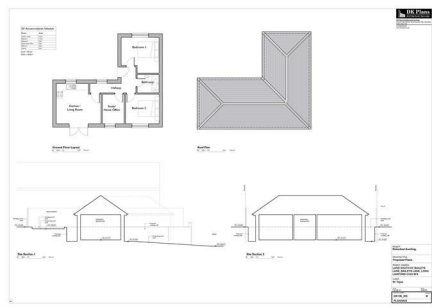
## Agents Note



Planning permission granted in December 2022  
<https://planning.agileapplications.co.uk/rugby/application-details/34608>

Please read the full application on the above web link to review the conditions. Access to the site is by appointment only.





Misrepresentation Act 1967 - These particulars are believed to be correct but their accuracy is not guaranteed nor do they form part of any contract.

18 Church Street, Rugby, Warwickshire, CV21 3PU  
 T: 01788 550 800  
 sales@complete247.co.uk  
 www.complete247.co.uk

**complete** ●●●  
 ESTATE AGENTS