



Scan me to get a **detailed property report & valuation** on your house!



Lauderdale Close, Long Lawford
Guide Price £180,000

complete ●●●
ESTATE AGENTS

Lauderdale Close, Long Lawford, Rugby

Complete Estate Agents are delighted to welcome to the market this well presented two bedroom End Terrace property with and good size driveway. The property boasts a fitted kitchen, down stairs WC, lounge/diner, first floor bathroom, two bedrooms, UPVC glazing, gas central heating, private rear garden and parking for several vehicles. The property is for sale with no onward chain and early internal inspection is strongly recommended. Can be sold either with tenant in situ or vacant possession.

Entrance Hall

Radiator, open plan to Kitchen, door to:

Kitchen 8'7" x 7'11" (2.63 x 2.42)

Fitted with a matching range of base and eye level units with worktop space over with drawers and worktop space over, stainless steel sink with single drainer and mixer tap, plumbing for washing machine, space for fridge/freezer, built-in electric oven, built-in four ring gas hob with extractor hood over, uPVC double glazed window to front.

Cloakroom

Fitted with two piece suite comprising, pedestal wash hand basin and low-level WC, tiled splashback.



Lounge / Diner 15'9" x 11'10" 29'6" (4.81 x 3.63 9)

UPVC double glazed window to rear, double radiator, stairs, double glazed door.

First Floor Landing

Bedroom One 12'9" x 11'10" (3.91 x 3.63)

UPVC double glazed window to rear, double radiator.

Bedroom Two 11'6" x 5'4" (3.53 x 1.65)

UPVC double glazed window to side, radiator.

Bathroom

Three piece suite comprising deep panelled bath, pedestal wash hand basin and low-level WC, tiled splashbacks, uPVC double glazed window to front, Storage cupboard, radiator, door.

Parking

Parking for several vehicles to the side of the property.

Garden

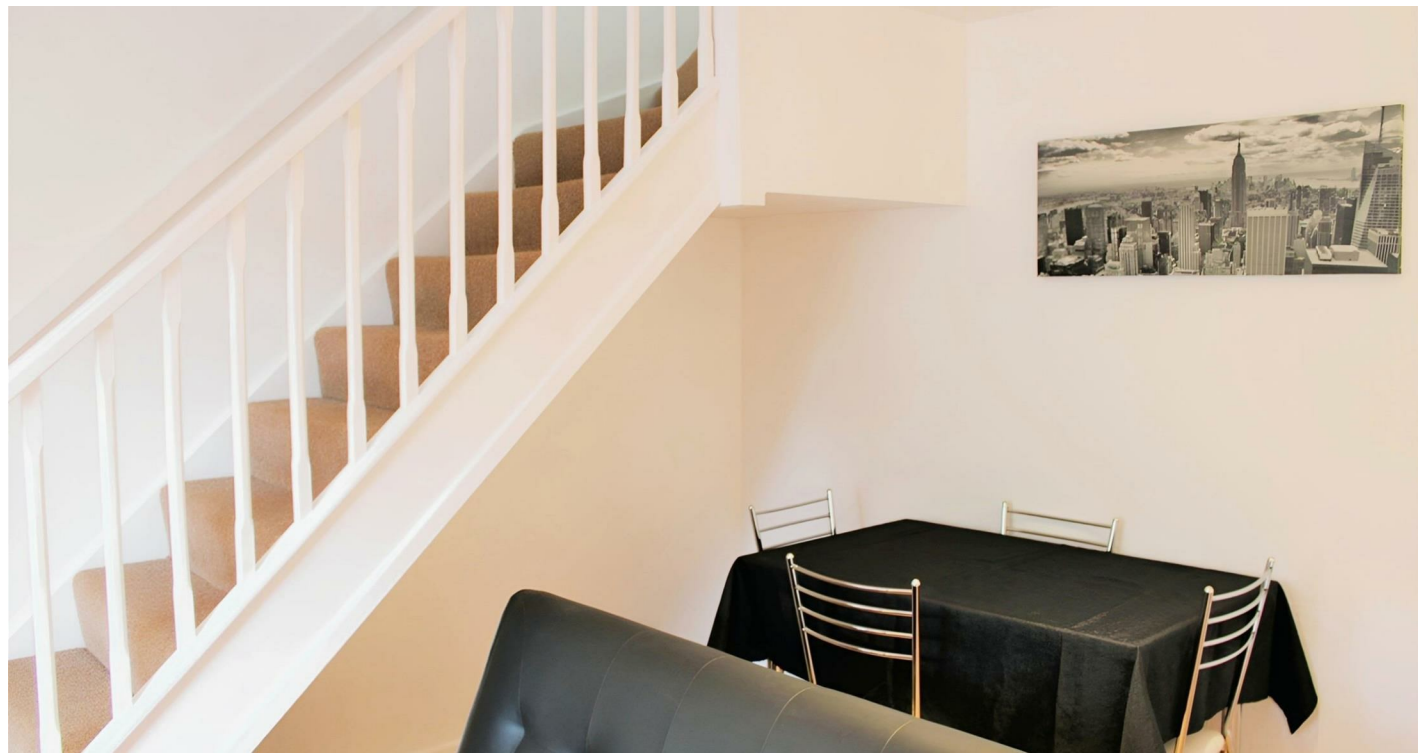
Large paved patio area with gravel and artificial lawned areas. Fully enclosed by timber fencing. Gated side access.

About Rugby

Rugby is a market town in Warwickshire, England, on the River Avon. The town has a population of 70,628 (2011 census[1]) making it the second largest town in the county. The enclosing Borough of Rugby has a population of 100,500 (2011 census). Rugby is 13 miles (21 km) east of Coventry, on the eastern edge of Warwickshire, near the borders with Northamptonshire and Leicestershire. The town is credited with being the birthplace of rugby football.

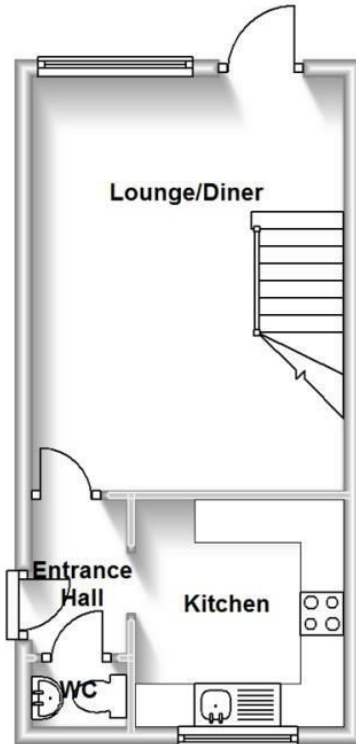
Rugby Borough Council

Rugby Borough Council,
Town Hall,
Evreux Way,
Rugby
CV21 2RR

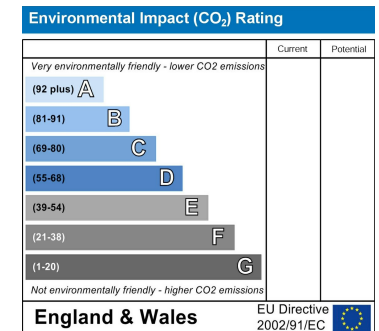
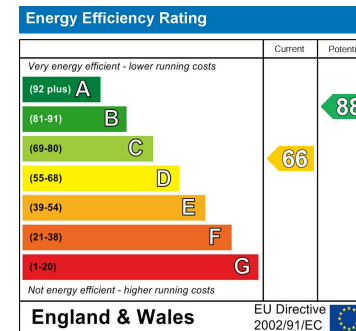
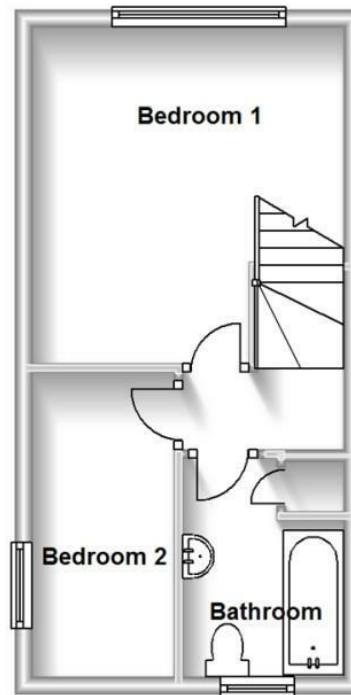




Ground Floor



First Floor



Misrepresentation Act 1967 - These particulars are believed to be correct but their accuracy is not guaranteed nor do they form part of any contract.

18 Church Street, Rugby, Warwickshire, CV21 3PU
 T: 01788 550 800
 sales@complete247.co.uk
 www.complete247.co.uk

complete ●●●
 ESTATE AGENTS