



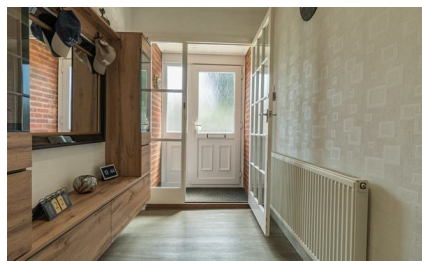
2 Pine Walk, Herne Bay, Kent, CT6 6QY



...TUCKED AWAY AND ACCESSED VIA AN UNMADE ROAD YOU WILL FIND THIS SPACIOUS DETACHED 3 BEDROOM BUNGALOW WITH A LOVELY REAR GARDEN 104 ft x 45ft ...LOCATED JUST OFF THE VILLAGE OF BELTINGE YET CLOSE TO THE BUS ROUTE AND SCENIC WALKS AND BIKE RIDES DOWN TO THE SEAEFFICIENT AND ECONOMICAL OIL CENTRAL HEATING SYSTEMDOUBLE GLAZING..NEWLY FITTED KITCHEN....GENEROUS SIZE SPLIT LEVEL LOUNGE/ DINING ROOM ..FAMILY BATHROOM ..UTILITY ROOM WITH SHOWER ...GARAGE .. VERY LARGE DECKING AREA TO REAR GARDEN ...MUST BE VIEWED VIDEO TOUR AND FULL PHOTOS AVAILABLE SOON



£465,000 Freehold





Entrance Porch

Extensive Entrance Hall (in length)

Airing cupboard with hot water tank. Storage cupboard. Central heating boiler cupboard. Access to roof with loft ladder and light. 2x radiators. Power points.

Front Bedroom

11'10 x 9'10 (3.61m x 3.00m)

Radiator. Power points.

Front Bedroom

13'4 x 11'10 (4.06m x 3.61m)

Radiator. Power points. Range of built-in wardrobes with shelving.

Side Bedroom

10'9 x 9'3 (3.28m x 2.82m)

Radiator. Power points.

Bath/WC

6'7 x 6'8 (2.01m x 2.03m)

Panelled bath with mixer taps. Heated towel rail. Low level WC suite Pedestal wash basin, heated large mirror with led lighting. Tiled walls and flooring. Access to roof space.

Lounge

15' x 13'8 (4.57m x 4.17m)

Double glazed side window. Marble fire surround and electric fire. Radiator. Power points. Television point. 2x steps down to

Dining Room

11'9 x 15'7 (3.58m x 4.75m)

Double glazed patio doors to rear garden. Power points. Radiator. Door to

Kitchen

13'9 x 9'10 (4.19m x 3.00m)

Range of base units. Wall cupboards. Resin composite sink unit. Halogen hob. Integrated cooker. Integrated dishwasher. Heated towel rail. Integrated fridge/freezer. Kick board lighting. Integrated microwave. Door to rear garden.

Shower/Utility Room

10' x 5' (3.05m x 1.52m)

Shower cubicle. Low level WC suite. Vanity wash handbasin. Heated towel rail.

OUTSIDE

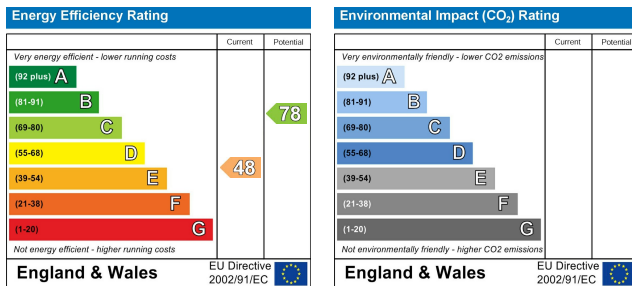
Attached Garage

Electric roller door. Power point. Light and water.

Rear Garden

104' deep x 45 (31.70m deep x 13.72m)

Mainly laid to lawn. 2x Sheds (one raised on decking). Large decking. Patio area. Side gate. Large chestnut tree.



Note:

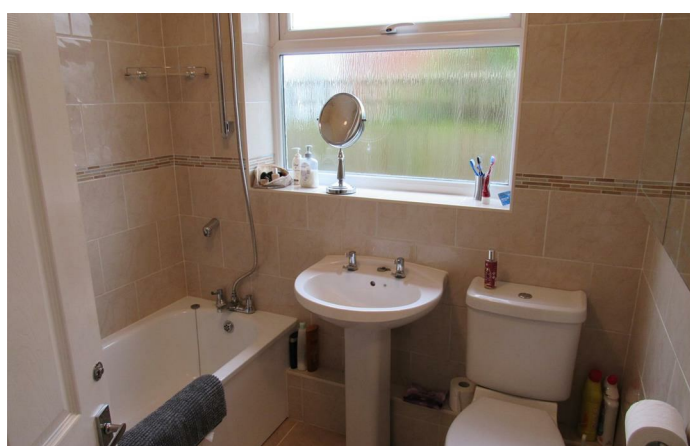
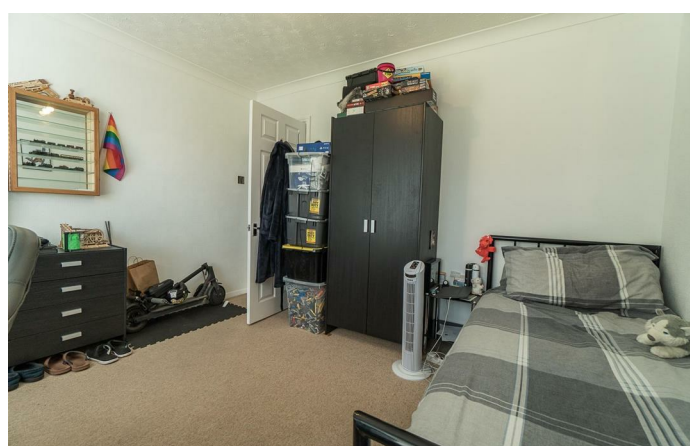
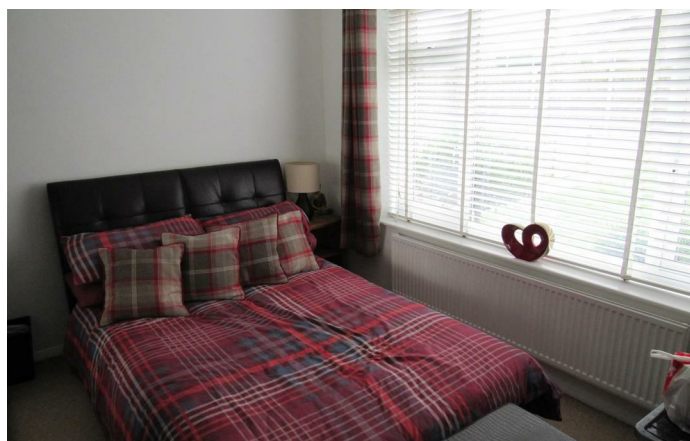
We have not tested the heating system, electrical appliances or the electric, gas and plumbing systems.

If travelling any distance to view this property it is advisable to check the availability and viewing times before hand. Wilbee & Son, as agents, cannot be held responsible for lost journey times and / or any expenses incurred.

These particulars are issued on the condition that any negotiations respecting the property are through Wilbee & Son. Every care is taken in giving particulars but should any error inadvertently occur or any property found to be previously withdrawn or disposed of, Wilbee & Son do not hold themselves responsible for any expenses or loss of time incurred. Neither the Vendor, nor the Partners or any employee of Wilbee & Son make or give any representation or warranty in relation to the property.

Oyster Financial Services is an appointed representative of Openwork Limited, which is authorised and regulated by the Financial Services Authority





WILBEE & SON



01227 374010

property@wilbeeandson.co.uk

