



## Flat B 56 William Street, Herne Bay, CT6 5PB



CENTRALLY LOCATED NICELY PRESENTED FIRST FLOOR 1 BEDROOM SELF- CONTAINED LEASEHOLD FLAT . CONVENIENT FOR THE PARK ,LEISURE CENTRE ,TOWN CENTRE AND SEA FRONT .SCHOOLS ALSO AT HAND .GAS CENTRAL HEATING ,DOUBLE GLAZING . 126 YEARS LEFT ON LEASE , NO SERVICE CHARGE . NO FORWARD CHAIN . IDEAL BUY TO LET OR AIR BNB .. VIDEO SHOWS THE GROUND FLOOR ALSO FOR SALE IN THE SAME BUILDING ..

**£170,000 Leasehold**



## Communal Entrance Hall

gas meter , consumer unit in cupboard

## Stairs to 1/2 Landing

Stairs to Split level Landing with ladder access to roof space converted into a bedroom

## Front Lounge

13'11" x 12'10" (4.25m x 3.92m )

radiator , tv point , power points , new double glazed sliding sash windows to bay ,

## Bedroom

10'6" x 9'6" (3.21m x 2.9m )

power points ,radiator

## Kitchen

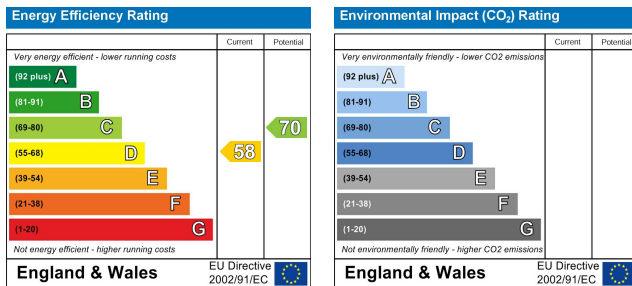
8'7" x 7'5" (2.63m x 2.28m )

stainless sink unit , follow on worktops , base units , extractor hood , power points , fridge , freezer, electric cooker, radiator , power points ,tiling ,acces to second roof space .

## Shower/wc

8'7" x 6'1" (2.64m x 1.87m )

shower cubicle, radiator, cupboard housing boiler for central heating and hot water , low level wc suite , pedestal wash basin.



**Note:**

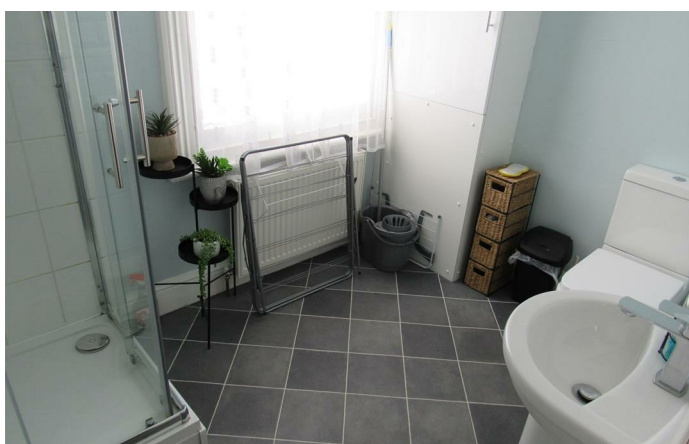
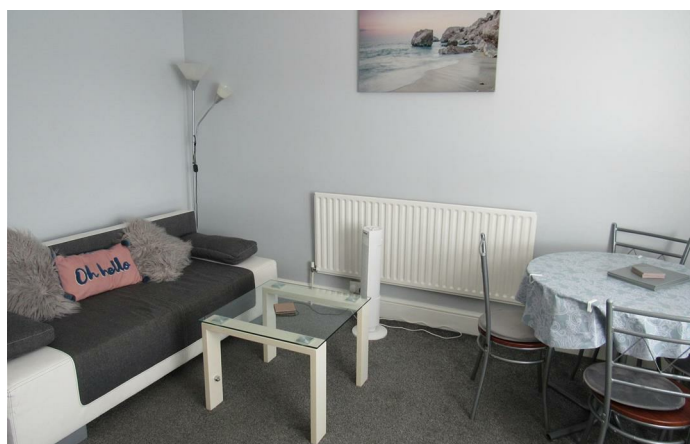
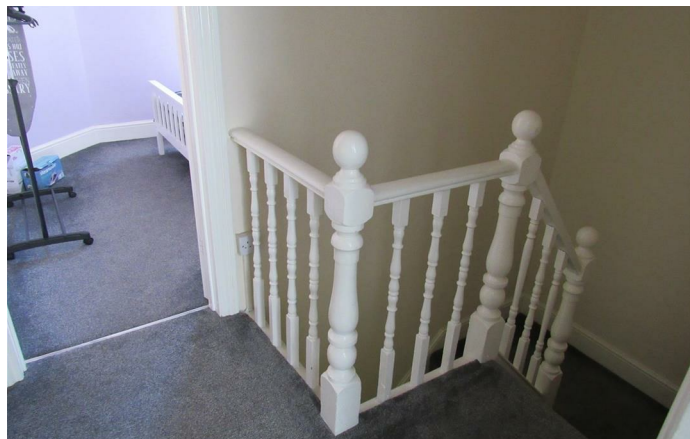
We have not tested the heating system, electrical appliances or the electric, gas and plumbing systems.

If travelling any distance to view this property it is advisable to check the availability and viewing times before hand. Wilbee & Son, as agents, cannot be held responsible for lost journey times and / or any expenses incurred.

These particulars are issued on the condition that any negotiations respecting the property are through Wilbee & Son. Every care is taken in giving particulars but should any error inadvertently occur or any property found to be previously withdrawn or disposed of, Wilbee & Son do not hold themselves responsible for any expenses or loss of time incurred. Neither the Vendor, nor the Partners or any employee of Wilbee & Son make or give any representation or warranty in relation to the property.

Oyster Financial Services is an appointed representative of Openwork Limited, which is authorised and regulated by the Financial Services Authority





# WILBEE & SON



**01227 374010**

[property@wilbeeandson.co.uk](mailto:property@wilbeeandson.co.uk)