


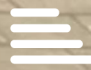




HUNTERS®
HERE TO GET *you* THERE

 2  1  1  B

Eldon Place, Eccles, Manchester, M30 8QE

£175,000



Offered with no onward chain, this beautifully presented two-bedroom terrace property enjoys a gated setting and boasts uninterrupted views of parkland to the rear.

The home features a welcoming entrance hallway, a convenient ground floor W/C, a stylish modern fitted kitchen, and a spacious open-plan lounge/dining area perfect for everyday living and entertaining. Upstairs, a landing leads to two generous double bedrooms and a contemporary family bathroom suite.

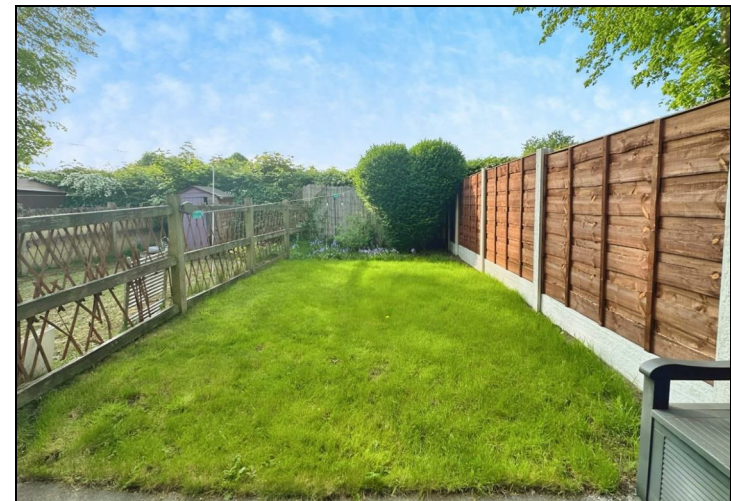
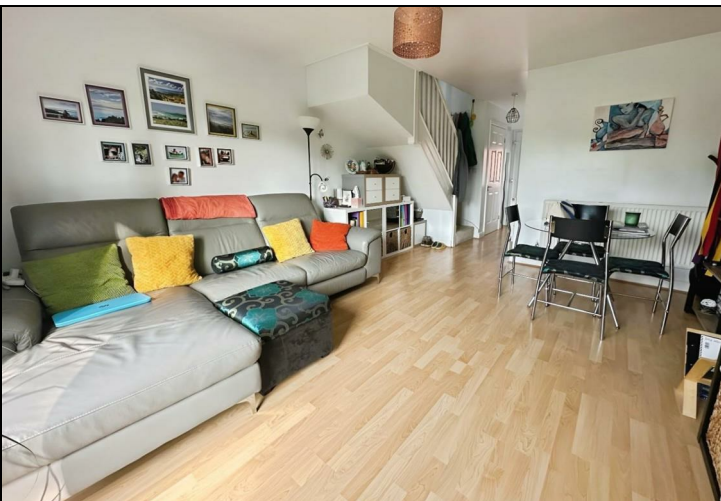
Additional benefits include gas central heating, double glazing, and off-road parking to the front. The private rear garden, laid to lawn, backs directly onto the park, offering a peaceful outdoor retreat.

An ideal purchase for first-time buyers, downsizers, or investors — early viewing is highly recommended.

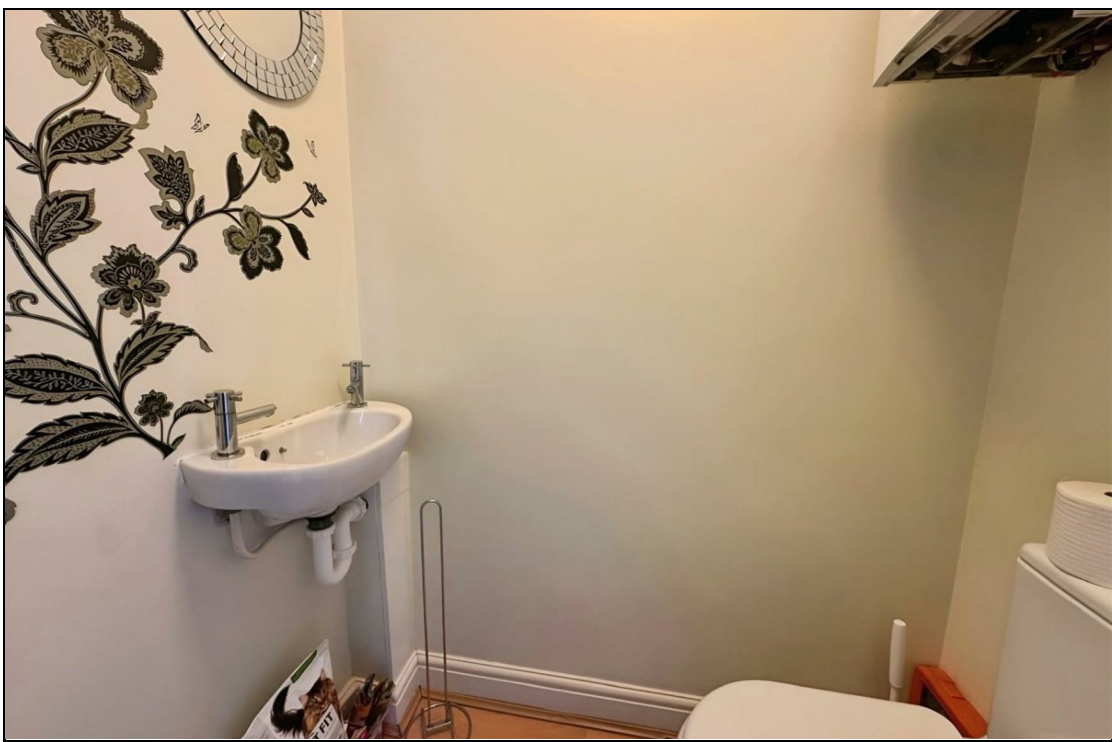


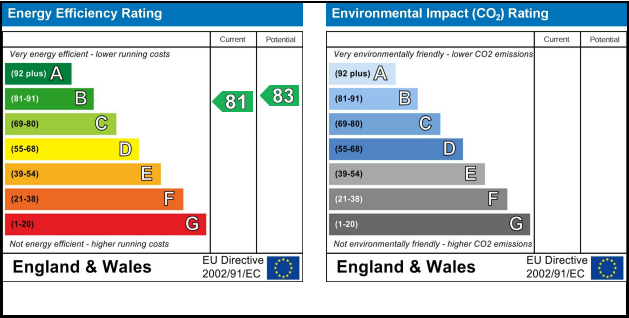
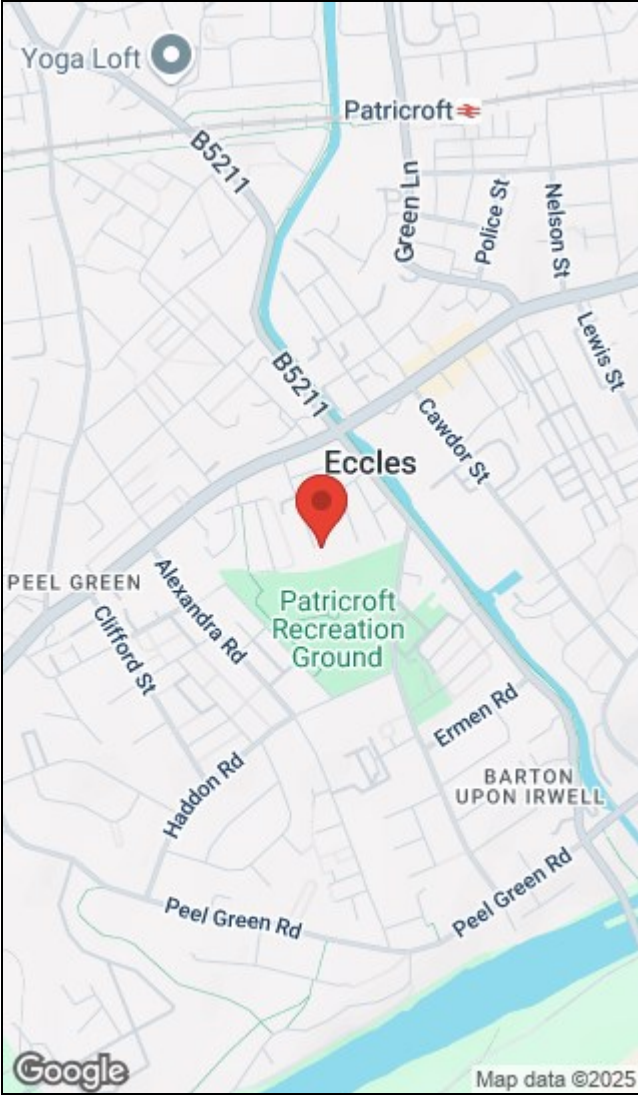
KEY FEATURES

- TWO BEDROOMED
- MEWS HOUSE
- MODERN FITTED KITCHEN
- PATIO DOORS
- GAS CENTRAL HEATING
- EPC RATING B
- SECURE GATED PARKING
- CLOSE TO THE TRAFFORD CENTRE
AND ECCLES TOWN CENTRE
- NOT OVERLOOKED









The Granary, Worsley, Manchester, M28 2EB | 0161 790 9000
worsley@hunters.com | www.hunters.com



This Hunters business is independently owned and operated by Prestige Property International Limited | Registered Address Mill House 6 Worsley Road, Worsley, Manchester, England, M28 2NL | Registered Number: 05299070 England and Wales | VAT No: 938460205 with the written consent of Hunters Franchising Limited.