



Haydock Street, Newton-Le-Willows £375 Per Month

Council Tax:

Tenure:



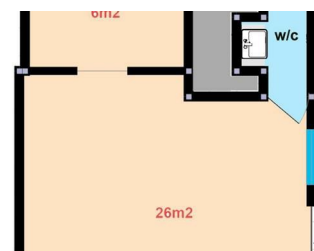
Unit 3 - Haydock St, Newton-Le-Willows, WA12 9DH

35m2 / 376 sq feet. Small unit near the centre of Earlestown / Market.

Several parking spaces available.

Single phase electricity. Although 3 phase can be made available if necessary.

Landlord can modify / customise to suit use if required.



- SMALL UNIT
- SEVERAL PARKING SPACE
- REGENERATION AREA