



HUNTERS[®]
HERE TO GET *you* THERE

 2  1  nuff

Parrin Lane, Eccles, Manchester, M30 8AY

Per Calendar Month £1,250 Per Calendar Month

HUNTERS[®]

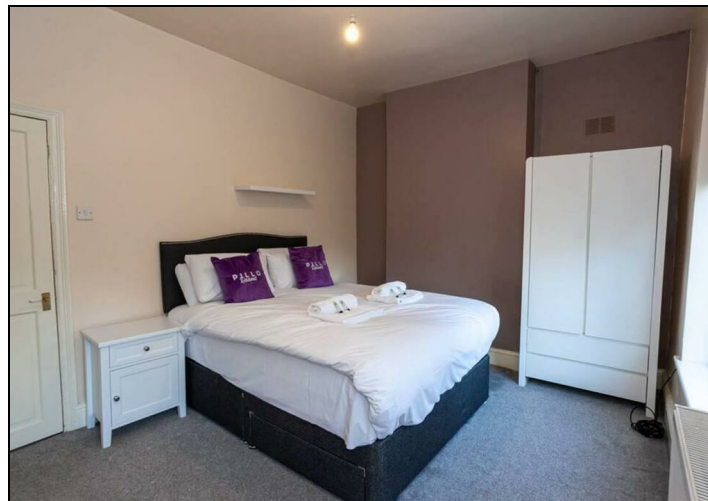
HERE TO GET *you* THERE

Parrin Lane is a 2 bed semi detached property on the edge of Monton Village. There are numerous shops, bars and restaurants here to keep you busy of an evening or weekend, The Bridgewater Canal walk runs through Monton to Worsley Village and the loop line is a stones through away for walkers and cyclists. Transport links are very accessible with buses to the City Centre, Trafford Centre and Eccles Town Centre passing right by on Parrin Lane. The Metro can be caught from Eccles Town Centre and the M602/M60 is near by. The property you will find a bay fronted living room, a spacious modern kitchen, one double and one single bedroom and a bathroom. FULLY FURNISHED.



KEY FEATURES

- 2 BED SEMI DETACHED
- FULLY FURNISHED
- KITCHEN/UTILITY
- NEW BATHROOM
- CLOSE TO MONTON VILLAGE
- EPC RATING E
- GREAT LOCATION
- CLOSE TO LOCAL AMENITIES







Parrin Lane, Eccles, Manchester, M30 8AY



GROUND FLOOR
APPROX FLOOR
AREA 36.7 SQM
(395 SQFT)



FIRST FLOOR
APPROX FLOOR
AREA 30.7 SQM
(331 SQFT)

APPROX. GROSS INTERNAL FLOOR AREA 726 SQ FT 67.4 SQ METRES

Whilst every attempt has been made to ensure the accuracy of the floor plan contained here, measurements of doors, windows and rooms are approximate and no responsibility is taken for any error, omission or misstatement. These plans are for representation purposes only as defined by RICS Code of Measuring Practice and should be used as such by any prospective purchaser. Specifically no guarantee is given on the total square footage of the property if quoted on this plan. Any figure given is for initial guidance only and should not be relied on as a basis of valuation.

Copyright nichecom.co.uk 2019 Produced for Hunters Property Group REF : 535359

Parrin Lane, Eccles, Manchester, M30 8AY



GROUND FLOOR
APPROX FLOOR
AREA 36.7 SQM
(395 SQFT)

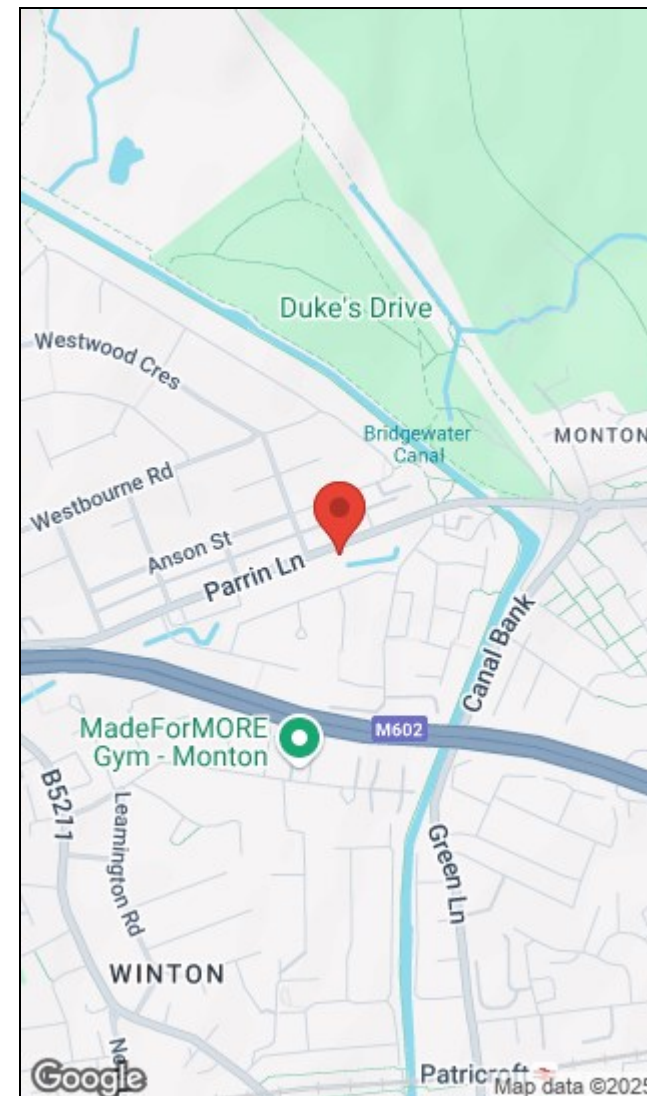


FIRST FLOOR
APPROX FLOOR
AREA 30.7 SQM
(331 SQFT)

APPROX. GROSS INTERNAL FLOOR AREA 726 SQ FT 67.4 SQ METRES

Whilst every attempt has been made to ensure the accuracy of the floor plan contained here, measurements of doors, windows and rooms are approximate and no responsibility is taken for any error, omission or misstatement. These plans are for representation purposes only as defined by RICS Code of Measuring Practice and should be used as such by any prospective purchaser. Specifically no guarantee is given on the total square footage of the property if quoted on this plan. Any figure given is for initial guidance only and should not be relied on as a basis of valuation.

Copyright nichecom.co.uk 2019 Produced for Hunters Property Group REF : 535359



Energy Efficiency Rating			Environmental Impact (CO ₂) Rating		
	Current	Potential		Current	Potential
Very energy efficient - lower running costs			Very environmentally friendly - lower CO ₂ emissions		
(92 plus) A		88	(92 plus) A		
(81-91) B			(81-91) B		
(69-80) C			(69-80) C		
(55-68) D			(55-68) D		
(39-54) E	46		(39-54) E		
(21-38) F			(21-38) F		
(1-20) G			(1-20) G		
Not energy efficient - higher running costs			Not environmentally friendly - higher CO ₂ emissions		
England & Wales	EU Directive 2002/91/EC		England & Wales	EU Directive 2002/91/EC	

The Granary, Worsley, Manchester, M28 2EB | 0161 790 9000
worsley@hunters.com | www.hunters.com



This Hunters business is independently owned and operated by Prestige Property International Limited | Registered Address Mill House 6 Worsley Road, Worsley, Manchester, England, M28 2NL | Registered Number: 05299070 England and Wales | VAT No: 938460205 with the written consent of Hunters Franchising Limited.