

HUNTERS®

HERE TO GET *you* THERE

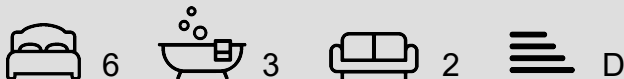


Boothstown Drive, Worsley

£975,000

Council Tax: F

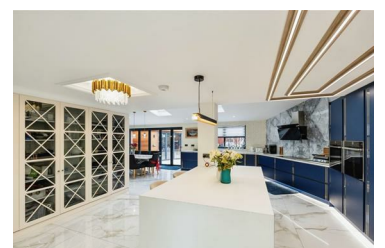
Tenure: Freehold



This stunning five-bedroom detached home is a masterpiece of modern design and bespoke craftsmanship, offering the perfect blend of luxury, functionality, and style. Spanning three spacious floors and featuring a large extension, this property has been meticulously crafted from scratch to the highest standards, delivering a truly exceptional living experience.

The ground floor features underfloor heating throughout, controlled by a Smart Nest system. The open-plan kitchen, dining, and family area is the heart of the home, equipped with NEFF appliances and advanced German mechanisms. The space is finished with striking tiles imported from Portugal, and bi-fold doors open onto a porcelain-tiled patio, seamlessly merging indoor and outdoor living. The landscaped garden is enhanced by night lighting, creating a perfect setting for evening relaxation. A separate living room offers a private retreat, complete with a bespoke media wall, while the utility room adds convenience to daily life.

- WOW FACTOR! MUST BEEN SEEN TO FULLY APPRECIATE
- LARGE OPEN PLAN KITCHEN/DINING/LIVING ROOM
- LARGE DORMA EXTENTION
- UTILITY ROOM
- BESPOKE FITTINGS THROUGHOUT
- OUTBUILDING WITH UNDERFLOOR HEATING
- SET OVER THREE FLOORS
- NO EXPENSE SPARED
- CONVERTED HEATED GARAGE INTO A PLAYROOM
- RARE OPPORTUNITY



Suite 4, The Granary 50 Barton Road, Worsley, Manchester, M28 2EB
Tel: 0161 790 9000 Email: worsley@hunters.com
<https://www.hunters.com>