



HUNTERS[®]

HERE TO GET *you* THERE

Oak Lea Gardens, Worsley, Manchester | Offers Over £525,000
Call us today on 0161 790 9000



Thinking of Selling?

If you are thinking of selling your home or just curious to discover the value of your property, Hunters would be pleased to provide free, no obligation sales and marketing advice. Even if your home is outside the area covered by our local offices we can arrange a Market Appraisal through our national network of Hunters estate agents.

Hunters Estate Agents are delighted to market this simply stunning detached home in Worsley! The property sits within a cul-de-sac and has recently been built in 2020 so comes with a NHBC warranty!

Internally, there is a welcoming entrance hallway with access to all ground floor accommodation & W.C. To the rear is a open plan entertaining area with fully fitted kitchen, island & integrated appliances. There is also bi-folding doors leading out to the rear garden & a separate utility room. For a quiet retreat, there is cosy living room to the front aspect & for home working, a self contained office that can be used as a fourth bedroom.

To the first floor, there are three spacious double bedrooms, the master having an en-suite & walk in wardrobe. The property has been re-configured from a 4 bedroom to a 3 bedroom so can be converted back. There is a three piece bathroom & shower room with all modern fittings serving the other bedrooms.

Externally, there is a private rear garden, mostly laid to lawn & Indian sandstone sitting areas. To the front aspect there is a large driveway for off road parking.

Surrounded by beautiful countryside with Manchester within easy reach, Worsley in Salford is a perfect place to settle and find your forever home.

A gorgeous base for commuters, Worsley is roughly 30 minutes by car to Manchester or just 18 minutes on public transport. Because of its proximity to Manchester, it also means London is within easy reach and you can be at Euston in just under 3 hours. The M61, M62, M60 and A580 are all minutes away, taking you to Liverpool, north Wales, the Lake District, Birmingham and beyond.

Worsley and the surrounding area are lush with greenery, golf clubs, gardens and country parks. For indoor activities, the Trafford Centre is 5 minutes down the M60 with loads of shops, restaurants and activities to satisfy a day out. Frequent public transport to makes Manchester.

Oak Lea Gardens, Worsley, Manchester, M28

Approximate Area = 1990 sq ft / 184.8 sq m

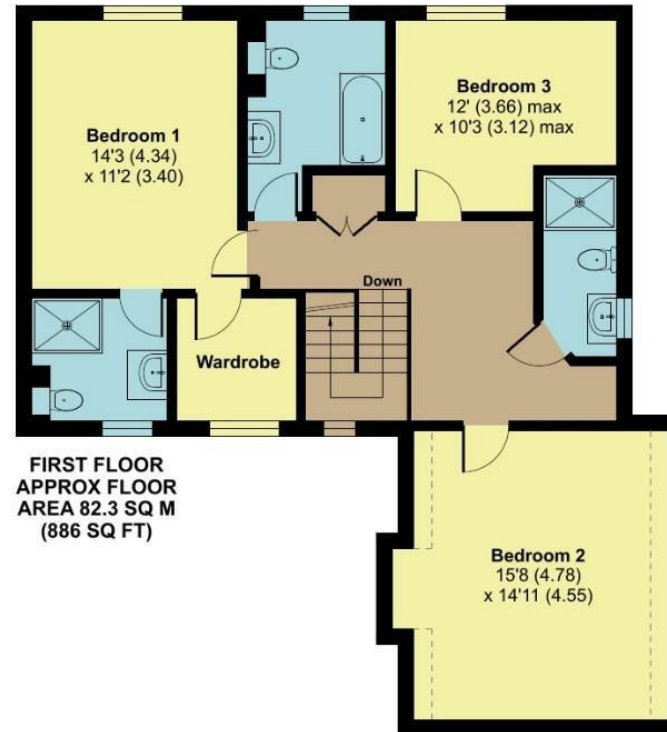
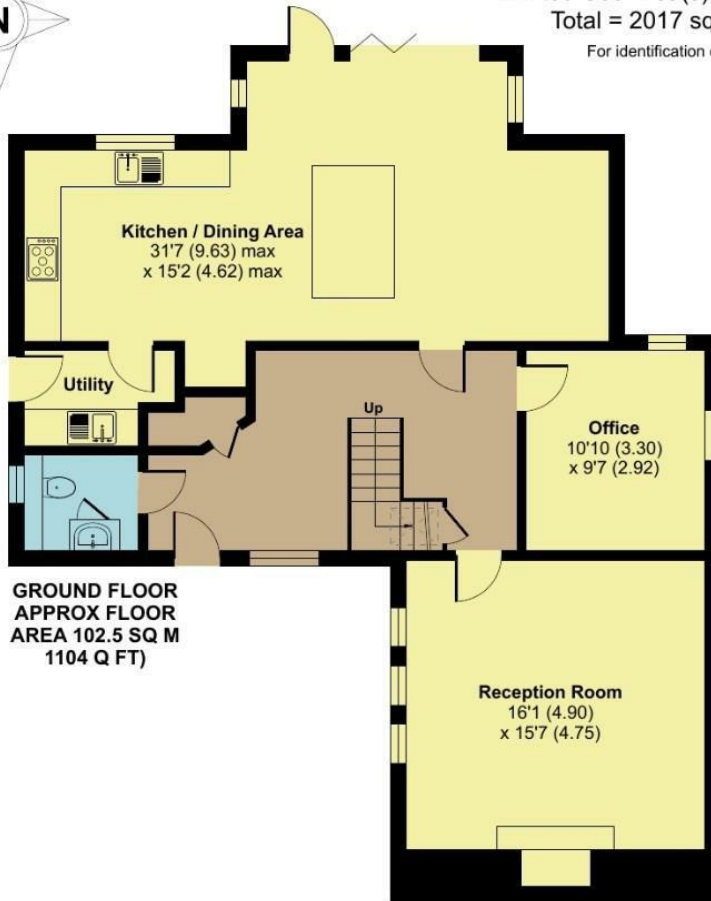
Limited Use Area(s) = 27 sq ft / 2.5 sq m

Total = 2017 sq ft / 187.3 sq m

For identification only - Not to scale



Denotes restricted head height



Floor plan produced in accordance with RICS Property Measurement Standards incorporating International Property Measurement Standards (IPMS2 Residential). © nichecom 2024. Produced for Hunters Property Group. REF: 1077217

These particulars are intended to give a fair and reliable description of the property but no responsibility for any inaccuracy or error can be accepted and do not constitute an offer or contract. We have not tested any services or appliances (including central heating if fitted) referred to in these particulars and the purchasers are advised to satisfy themselves as to the working order and condition. If a property is unoccupied at any time there may be reconnection charges for any switched off/disconnected or drained services or appliances - All measurements are approximate.

Suite 4, The Granary 50 Barton Road, Worsley, Manchester, M28 2EB | 0161 790 9000 | worsley@hunters.com

HUNTERS[®]
HERE TO GET *you* THERE