



Hartham Close, N7

£1,384 Per week

A spacious double fronted five bedroom family home with off street parking set on a peaceful Cul de Sac. The property offers a double reception with patio doors opening out to a large private garden, a modern fitted kitchen, two contemporary bathrooms, four double bedrooms and wooden flooring throughout.

Hartham close is a secluded residential street within easy reach of Caledonian road tube station (Piccadilly line) and the amenities of Holloway such as Waitrose, Sainsburys and the Odeon LUX cinema.

Features

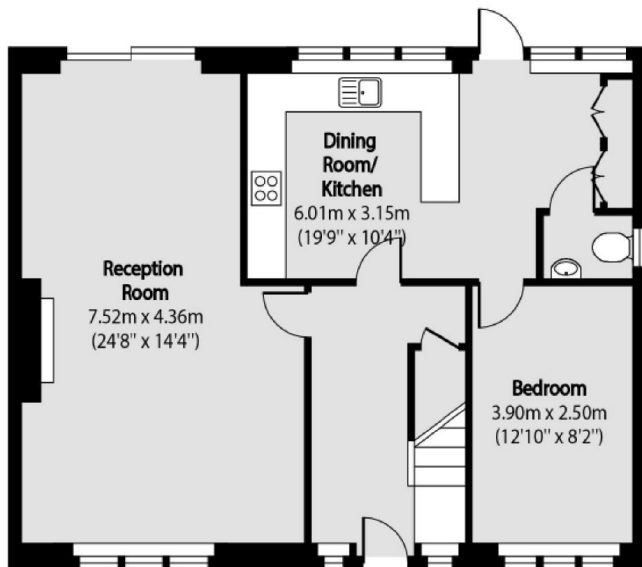
- Over 1400 Sq.Ft
- Two Bathrooms
- Two Receptions
- Four Double Bedrms
- Large Garden
- Off Street Parking



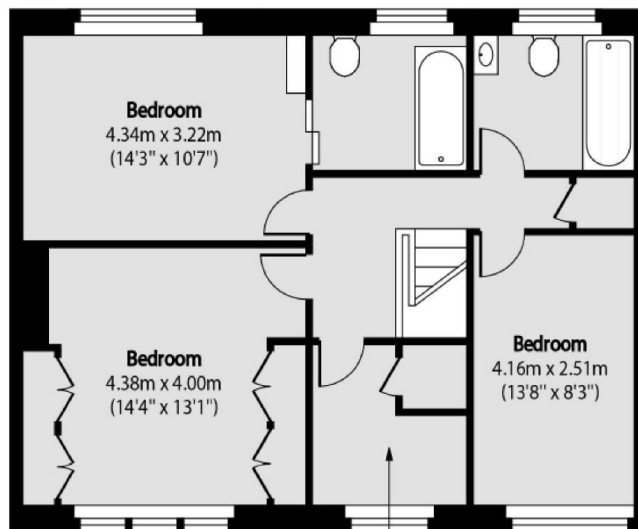
Hartham Close, N7



Hartham Close, London, N7



Ground Floor



First Floor

Total area (approx): 139.50 sq m (1502 sq. ft)
Shed Total area (approx): 4.50 sq m (48 sq. ft)