



Murray Street, NW1

£900,000

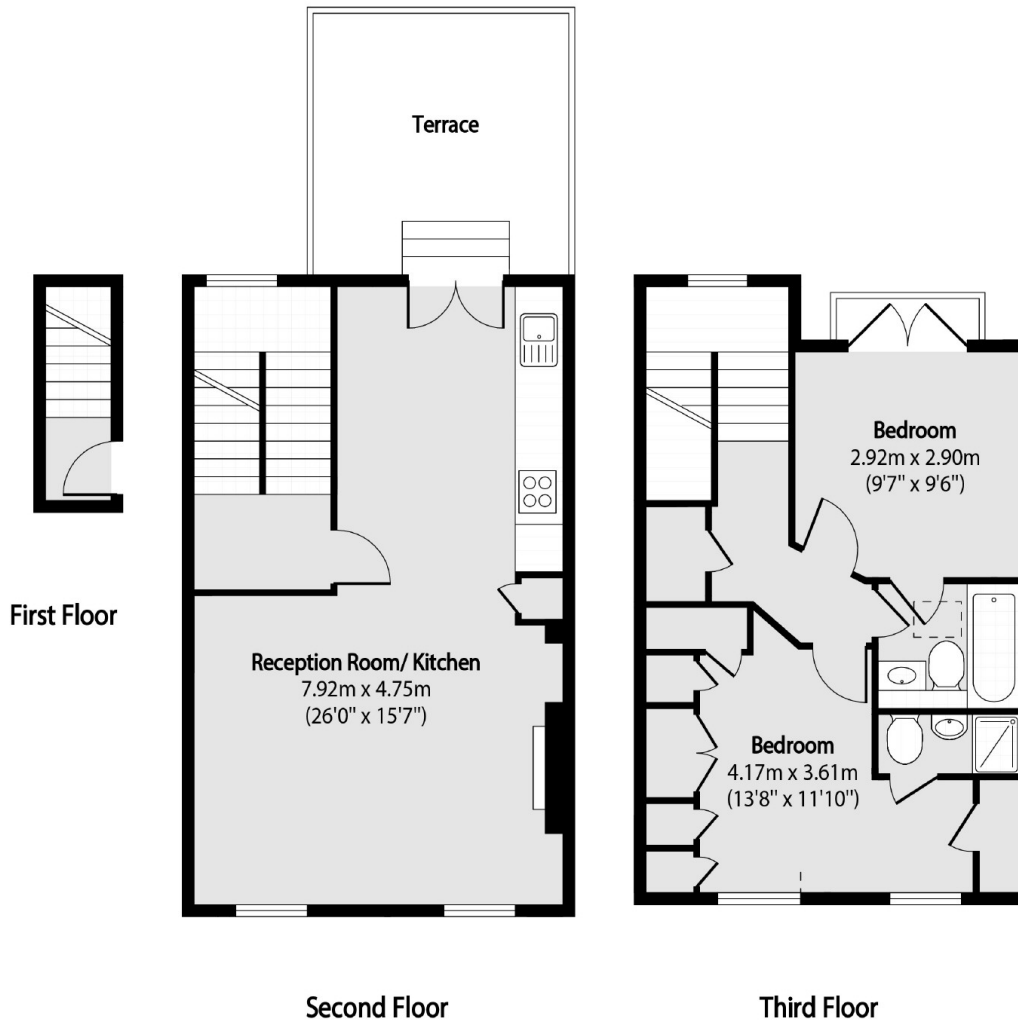
Just off the desirable Camden Square is this split level two double bedroom apartment. The property has an open plan kitchen / reception room with direct access to a private South Facing terrace.

Murray Street, situated in the Camden Square conservation area, is superbly located close to the many amenities of bustling Camden Town, with Regent's Park and Primrose Hill within easy reach.

Features

- Two Bedrooms
- South Facing Terrace
- High Ceilings
- Split Level
- Long Lease
- Two Bathrooms

Murray Street, London, NW1



Total area (approx): 74.60 sq m (803 sq. ft)

Terrace total area (approx): 128.75 sq m (1386 sq. ft)