



Lady Somerset Road, NW5

£750 Per week

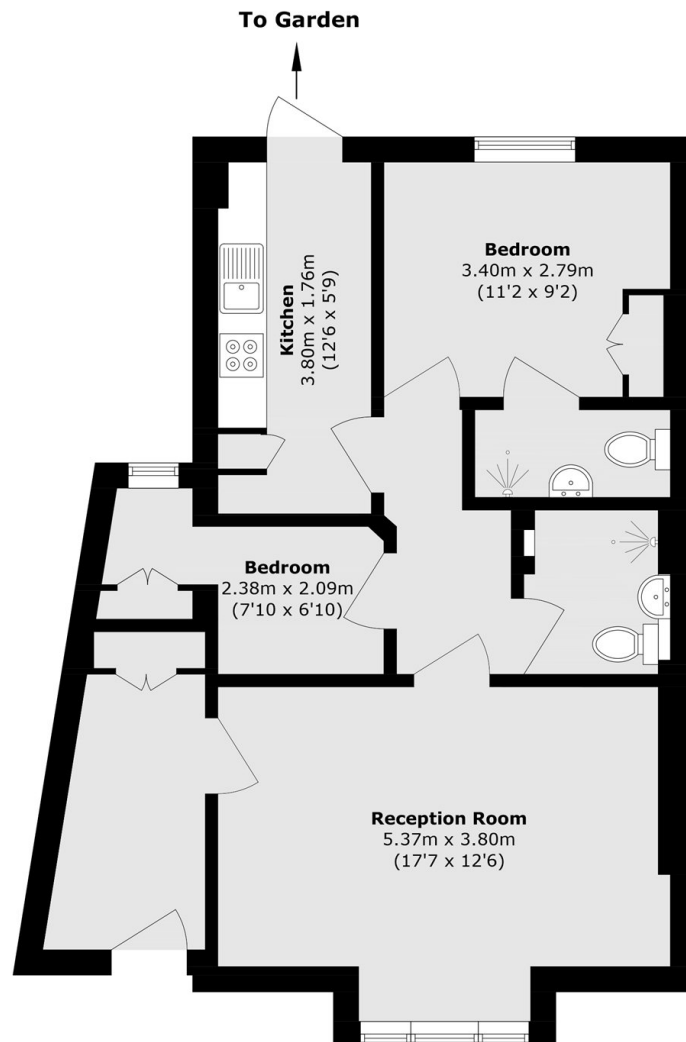
A well-presented two bedroom apartment in a Victorian house with its own private entrance. The property features a charming reception room, a separate kitchen, two bathrooms (one en suite) and a communal garden.

Lady Somerset Road is the half way point between Hampstead Heath and the buzz of both Kentish Town and Fortress Road. This property is a short walk from the Northern line, Overground and Thameslink.

Features

- Two Bedrooms
- Communal Garden
- Private Entrance
- Victorian Conversion
- Great Transport Links
- Chain Free

Lady Somerset Road,
London, NW5



Total area (approx.): 61.5 sq. m (661.9 sq. ft)

Dexters

Kentish Town & Camden
274 Kentish Town Road
London
NW5 2AA
Lettings
020 7483 6391

Energy Rating: C. We aim to make our particulars both accurate and reliable. However they are not guaranteed; nor do they form part of an offer or contract. If you require clarification on any points then please contact us, especially if you're traveling some distance to view. Please note that appliances and heating systems have not been tested and therefore no warranties can be given as to their good working order.

 **RICS** | Regulated
Estate Agent
and Letting Agent

[dexters.co.uk](https://www.dexters.co.uk)