



## Rousden Street, NW1

£475,000

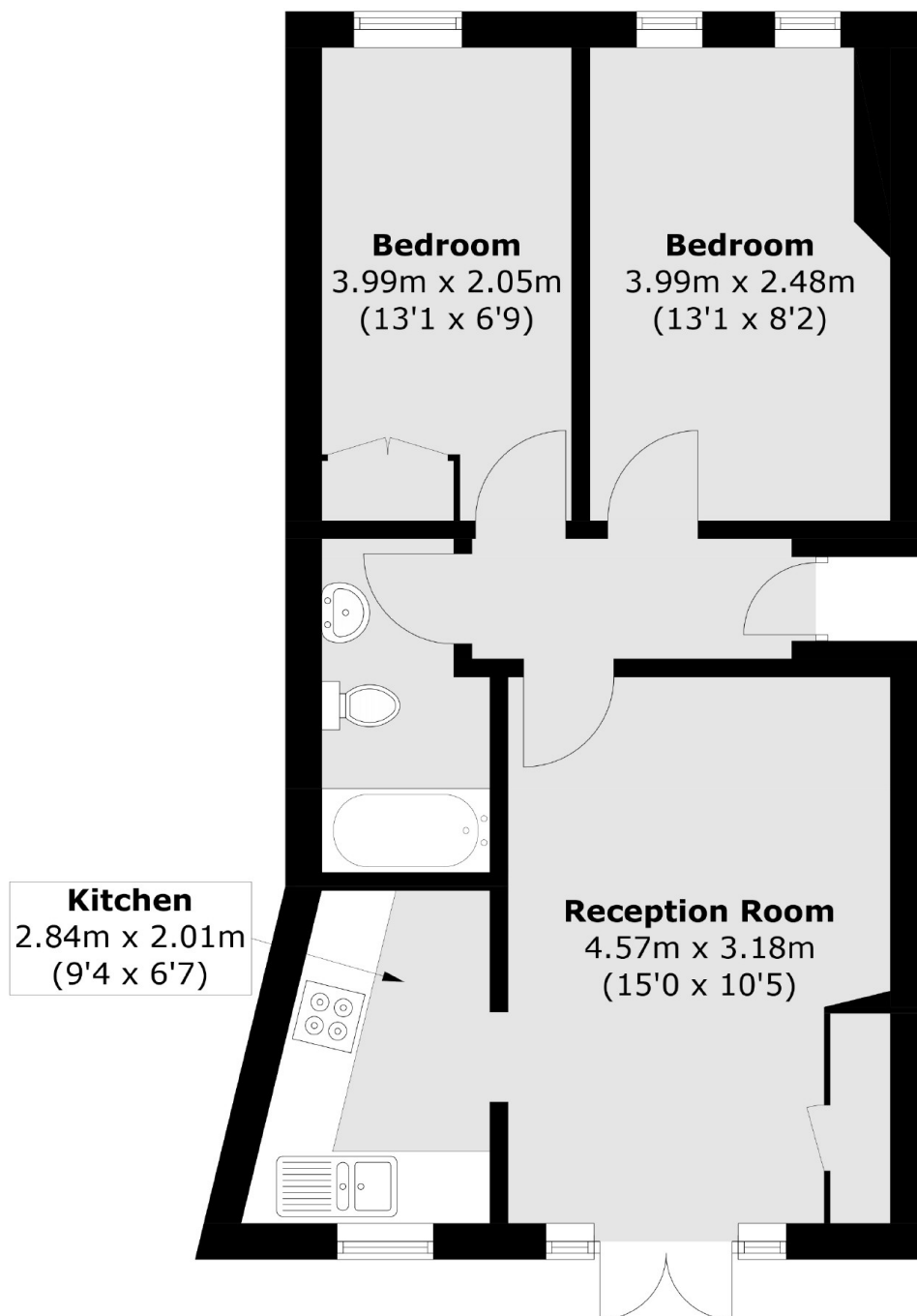
A two double bedroom property with its own garden close to Camden Town Station. The property offers a modern kitchen, living room leading to a patio garden, two double bedrooms and one bathroom.

Rousden Street is within easy reach of excellent transport links such as Camden Overground and the Northern Line. The popular bars, restaurants and boutique shops of Camden are just a short distance away.

### Features

- Two Bedrooms
- Private Garden
- Share Of Freehold
- Chain Free
- One Bathroom
- Great Location

# Rousden Street, London, NW1



Total area (approx.): 46.5 sq. m (500.4 sq. ft)