



Murray Street, NW1

£550,000

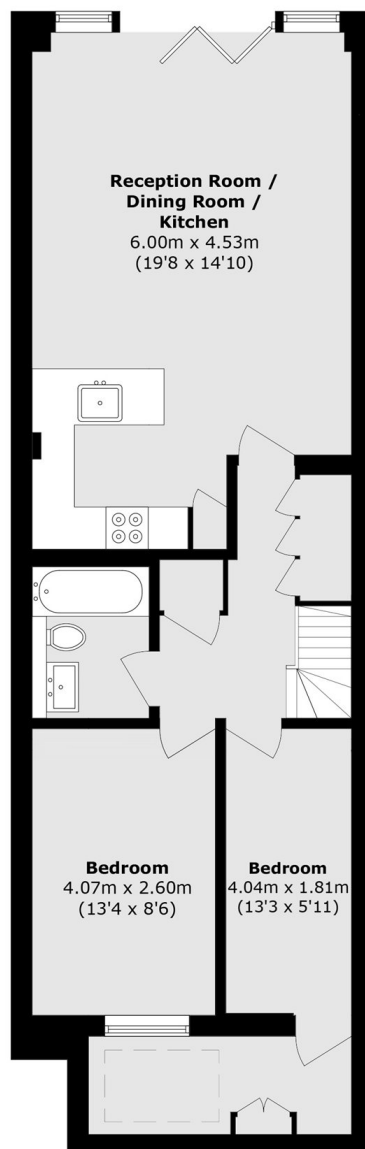
Just off the desirable Camden Square is this stunning two bedroom apartment. The property has been finished to an excellent standard throughout. There is also direct access to a private astroturf courtyard.

Murray Street, situated in the Camden Square conservation area, is superbly located close to the many amenities of bustling Camden Town, with Regent's Park and Primrose Hill within easy reach.

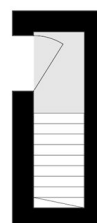
Features

- Two Bedrooms
- Courtyard
- One Bathroom
- Chain Free
- Leasehold
- Great Location

Murray Street, London, NW1



Lower Ground Floor



Ground Floor

Total area (approx.): 71.6 sq. m (770.7 sq. ft)