



## Prince Of Wales Road, NW5

### £750,000

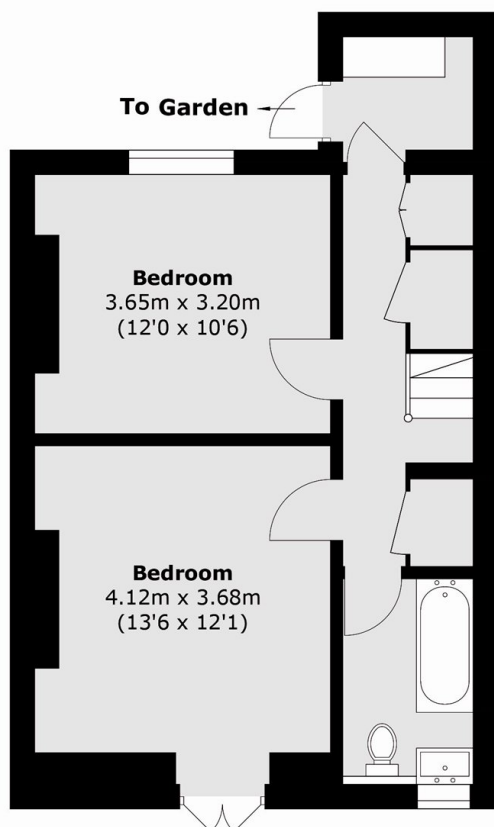
This very well-presented split-level apartment has two double bedrooms, a private garden, high ceilings and large windows throughout, allowing lots of natural light into the property.

Prince of Wales Road is a short walk to Primrose Hill and Belsize Park. It is also close to excellent transport links, with both Chalk Farm underground station and Kentish Town West Overground nearby.

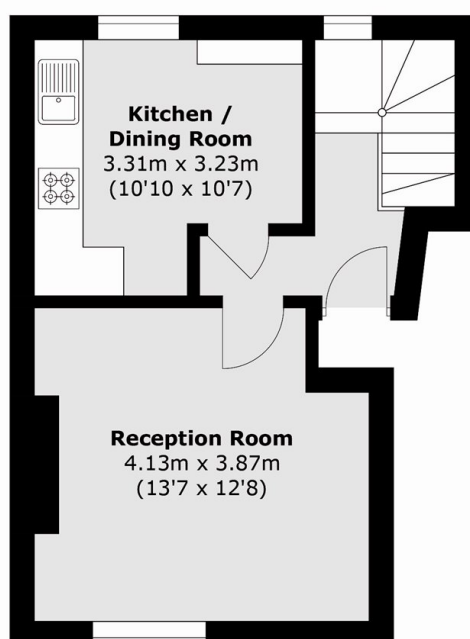
### Features

- Two Double Bedrooms
- Private Garden
- Split-Level
- One Bathroom
- Leasehold
- Chain Free

# Prince Of Wales Road, London, NW5



**Lower Ground Floor**



**Raised Ground Floor**

Total area (approx.): 75.1 sq. m (808.3 sq. ft)