



Bassett Street, NW5

£370 Per week

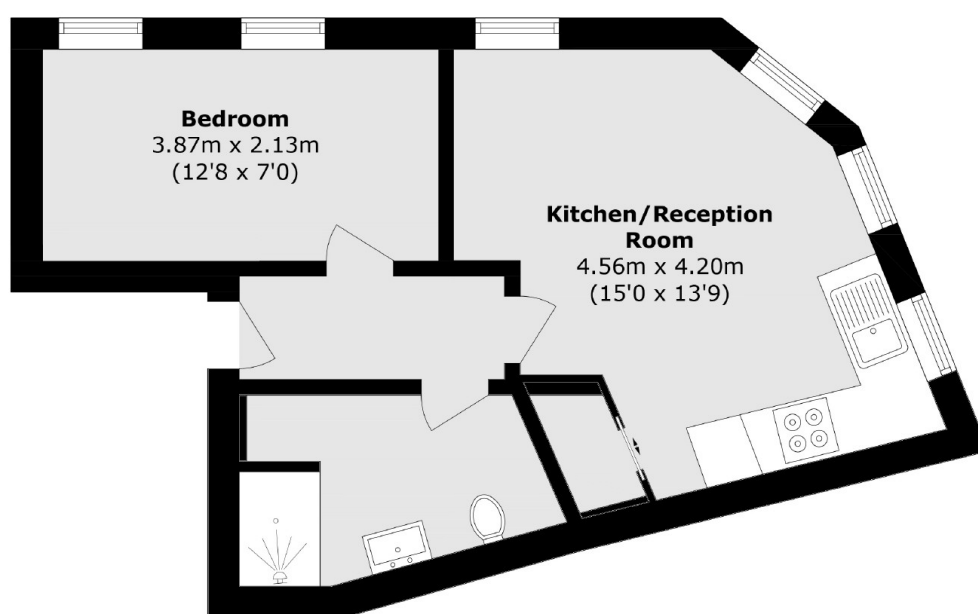
This one bedroom flat is finished to a high standard throughout. There is a spacious open plan kitchen reception room, modern bathroom and high ceilings throughout.

Bassett Street is conveniently positioned close to good transport links such as Chalk Farm Underground station on the Northern line, as well as Kentish Town West and Gospel Oak Overground, all located close by.

Features

- One Bedroom
- Fantastic Condition
- Great Transport Links
- High Ceilings
- Communal Storage
- Modern Finish

Bassett Street,
London, NW5



Total area (approx.): 34.3 sq. m (369.2 sq. ft)