



Rochester Place, NW1

£853 Per week

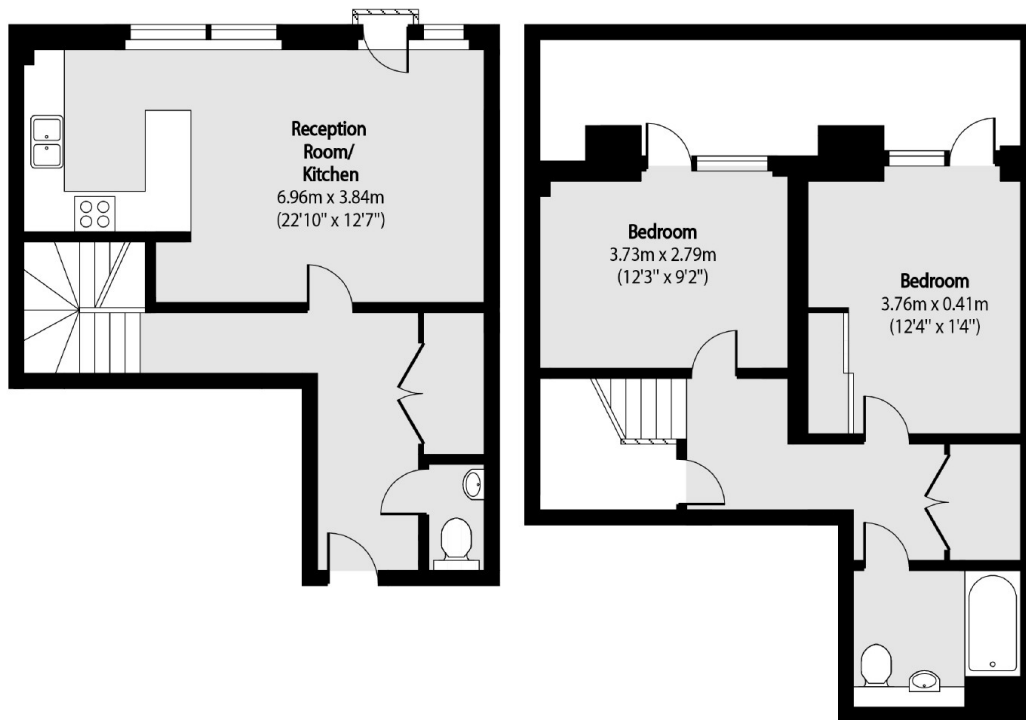
A split level two bedroom, two bathroom property in Rochester Place. The property has been finished to a very high standard throughout, with a modern open plan kitchen/living room and a large private courtyard.

Rochester Place offers easy access to fantastic transport links in Kings Cross, Camden and Euston. Camden Town, Regents Park and Primrose Hill are all within easy reach offering an amazing choice of popular restaurants, bars and green open spaces.

Features

- Two Double Bedroom
- Two Bathroom
- Large Private Courtyard
- Concierge
- Communal Roof Terrace
- Great Location

Rochester Place, London, NW1



Raised Ground Floor

Lower Ground Floor

Total area (approx): 85.19 sq m (917 sq. ft)